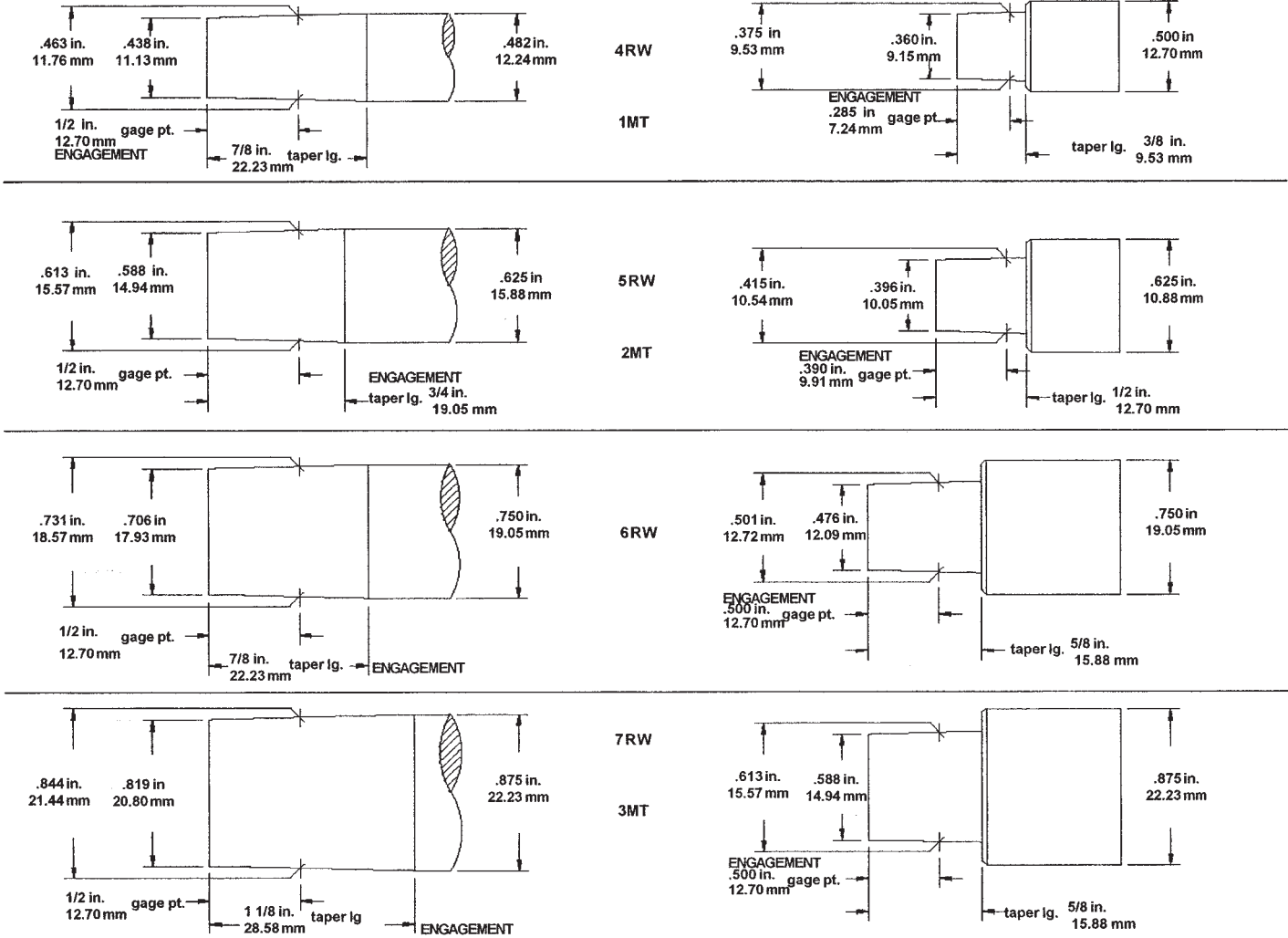




Standard Tapered Electrode Theoretical Dimensions **Taper Size** **Standard Male Taper Cap taper Dimensions**



Drawings Full Size

CMW CODING FOR STRAIGHT TAPERED ELECTRODES

X X X X X

Material	Nose	Attachment	Length
1 = CMW®28	1 = Dome	1 = No. 4RW	1 = 1"
	2 = Pointed	No. 1MT	2 = 1 1/4"
3 = CMW®3	3 = Flat		3 = 1 1/2"
5 = CMW®100	4 = Offset	2 = No. 5RW	4 = 1 3/4"
6 = ELKONITE® 10W3	5 = 2" Sph. R	No. 2MT	5 = 2"
	6 = 10" Sph. R.		6 = 2 1/4"
7 = ELKONITE®TC5	7 = Truncated	3 = No. 7RW	7 = 2 1/2"
8 = ELKON®100M	8 = 3" Sph. R	No. 3MT	8 = 2 3/4"
9 = ELKON®100W	9 = 4" Sph. R		9 = 3"
	0 = Shank for Male Cap	4 = No. 6RW	12 = 3 1/4"
			14 = 3 1/2"
			16 = 3 3/4"
			18 = 4"
			20 = 4 1/4"
			22 = 4 1/2"

Note: Prefix MP = Shank for Female Cap

RWMA CODING FOR STRAIGHT TAPERED ELECTRODES

X X X X X

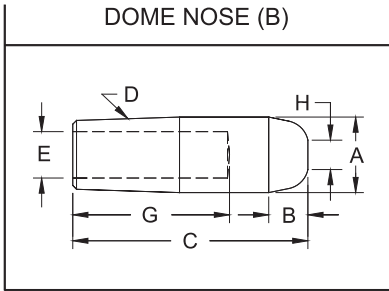
Nose	Material	Attachment	Length in no. of 1/4"
A = Pointed	1 = RWMA CL 1	4 = No. 4RW	04 = 1"
	CMW®28	No. 1MT	05 = 1 1/4"
B = Dome			06 = 1 1/2"
			07 = 1 3/4"
			08 = 2"
C = Flat	2 = RWMA CL 2	5 = No. 5RW	09 = 2 1/4"
	CMW®3	No. 2MT	10 = 2 1/2"
			11 = 2 3/4"
D = Offset		6 = No. 6RW	12 = 3"
			13 = 3 1/4"
			14 = 3 1/2"
			15 = 3 3/4"
E = Truncated	3 = RWMA CL 3	7 = No. 7RW	16 = 4"
	CMW®100	No. 3MT	17 = 4 1/4"
			18 = 4 1/2"



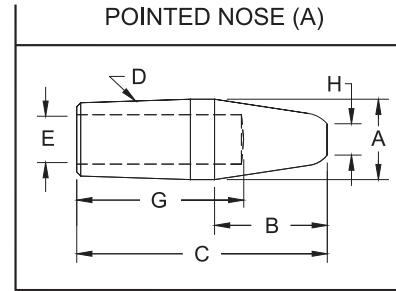
STRAIGHT ELECTRODES



DOME NOSE (B)



POINTED NOSE (A)



4 RW TAPER (D)			
CMW [®] 28	CMW [®] 3	CMW [®] 100	Nose Length B
Class 1	Class 2	Class 3	
1111	3111	5111	13/64
1112	3112	5112	1/4
1113	3113	5113	1/4
1114	3114	5114	1/4
1115	3115	5115	
1116	3116	5116	
1117	3117	5117	1/4
1118	3118	5118	
1119	3119	5119	
11112	31112	51112	1/4
11114	31114	51114	
11116	31116	51116	
11118	31118	51118	1/4

COMMON DIMENSIONS				
Face Dia. H	Major Dia. A	Water Hole Dia. E	Overall Length C	Hole Depth G
3/16	.482	9/32	1	5/8
			1-1/4	3/4
			1-1/2	1
			1-3/4	1-1/4
			2	1-1/2
			2-1/4	1-3/4
			2-1/2	2
			2-3/4	2-1/4
			3	2-1/2
			3-1/4	2-3/4
			3-1/2	3
			3-3/4	3-1/4
4	3-1/2			

4 RW TAPER (D)			
CMW [®] 28	CMW [®] 3	CMW [®] 100	Nose Length B
Class 1	Class 2	Class 3	
1211	3211	5211	3/8
1212	3212	5212	3/8
1213	3213	5213	5/8
1214	3214	5214	3/4
1215	3215	5215	
1216	3216	5216	
1217	3217	5217	3/4
1218	3218	5218	
1219	3219	5219	
12112	32112	52112	3/4
12114	32114	52114	
12116	32116	52116	
12118	32118	52118	3/4

5 RW TAPER (D)			
CMW [®] 28	CMW [®] 3	CMW [®] 100	Nose Length B
Class 1	Class 2	Class 3	
1122	3122	5122	3/8
1123	3123	5123	
1124	3124	5124	
1125	3125	5125	
1126	3126	5126	
1127	3127	5127	
1128	3128	5128	
1129	3129	5129	
11212	31212	51212	
11214	31214	51214	
11216	31216	51216	
11218	31218	51218	
11220	31220	51220	1-1/8
11222	31222	51222	

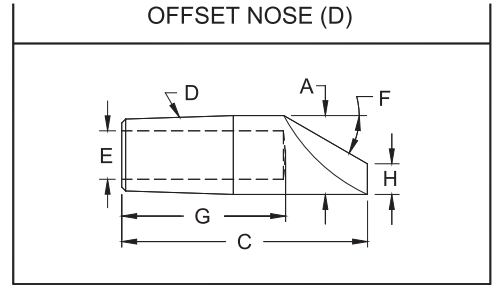
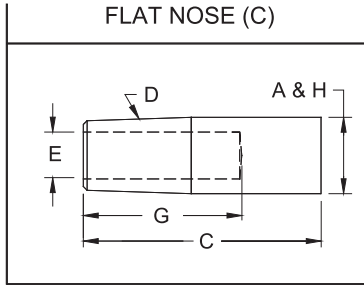
COMMON DIMENSIONS				
Face Dia. H	Major Dia. A	Water Hole Dia. E	Overall Length C	Hole Depth G
1/4	.625	3/8	1-1/4	3/4
			1-1/2	3/4
			1-3/4	1
			2	1-1/4
			2-1/4	1-1/2
			2-1/2	1-3/4
			2-3/4	2
			3	2-1/4
			3-1/4	2-1/2
			3-1/2	2-3/4
			3-3/4	3
			4	3-1/4
4-1/4	3-1/2			
4-1/2	3-3/4			

5 RW TAPER (D)			
CMW [®] 28	CMW [®] 3	CMW [®] 100	Nose Length B
Class 1	Class 2	Class 3	
1222	3222	5222	1/2
1223	3223	5223	3/4
1224	3224	5224	3/4
1225	3225	5225	1-1/8
1226	3226	5226	
1227	3227	5227	
1228	3228	5228	1-1/8
1229	3229	5229	
12212	32212	52212	
12214	32214	52214	1-1/8
12216	32216	52216	
12218	32218	52218	
12220	32220	52220	1-1/8
12222	32222	52222	

*Electrodes of other tapers and alloys available upon request.



STRAIGHT ELECTRODES



4 RW TAPER (D)			
CMW [®] 28	CMW [®] 3	CMW [®] 100	Face Dia. H
Class 1	Class 2	Class 3	
1311	3311	5311	.482
1312	3312	5312	
1313	3313	5313	
1314	3314	5314	
1315	3315	5315	
1316	3316	5316	
1317	3317	5317	
1318	3318	5318	
1319	3319	5319	
13112	33112	53112	
13114	33114	53114	
13116	33116	53116	
13118	33118	53118	

COMMON DIMENSIONS			
Major Dia. A	Water Hole Dia. E	Overall Length C	Hole Depth G
.482	9/32	1	5/8
		1-1/4	3/4
		1-1/2	1
		1-3/4	1-1/4
		2	1-1/2
		2-1/4	1-3/4
		2-1/2	2
		2-3/4	2-1/4
		3	2-1/2
		3-1/4	2-3/4
3-1/2	3		
3-3/4	3-1/4		
4	3-1/2		

4 RW TAPER (D)				
CMW [®] 28	CMW [®] 3	CMW [®] 100	Nose Angle F	Face Dia. H
Class 1	Class 2	Class 3		
1411	3411	5411	45°	3/16
1412	3412	5412	40°	
1413	3413	5413	30°	
1414	3414	5414	30°	
1415	3415	5415		
1416	3416	5416		
1417	3417	5417	30°	
1418	3418	5418		
1419	3419	5419		
14112	34112	54112	30°	
14114	34114	54114		
14116	34116	54116		
14118	34118	54118		

5 RW TAPER (D)			
1322	3322	5322	5/8
1323	3323	5323	
1324	3324	5324	
1325	3325	5325	
1326	3326	5326	
1327	3327	5327	
1328	3328	5328	
1329	3329	5329	
13212	33212	53212	
13214	33214	53214	
13216	33216	53216	
13218	33218	53218	
13220	33220	53220	
13222	33222	53222	

COMMON DIMENSIONS			
Major Dia. A	Water Hole Dia. E	Overall Length C	Hole Depth G
.625	3/8	1-1/4	3/4
		1-1/2	3/4
		1-3/4	1
		2	1-1/4
		2-1/4	1-1/2
		2-1/2	1-3/4
		2-3/4	2
		3	2-1/4
		3-1/4	2-1/2
		3-1/2	2-3/4
3-3/4	3		
4	3-1/4		
4-1/4	3-1/2		
4-1/2	3-3/4		

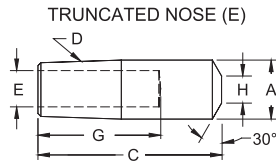
5 RW TAPER (D)				
1422	3422	5422	40°	1/4
1423	3423	5423	40°	
1424	3424	5424	30°	
1425	3425	5425	30°	
1426	3426	5426		
1427	3427	5427		
1428	3428	5428	30°	
1429	3429	5429		
14212	34212	54212		
14214	34214	54214	30°	
14216	34216	54216		
14218	34218	54218		
14220	34220	54220		
14222	34222	54222		

*Electrodes of other tapers and alloys available upon request.



STRAIGHT ELECTRODES

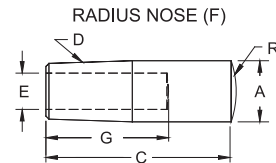
TRUNCATED (E)								
CMW® 28	CMW® 3	CMW® 100	Major Dia. A	Overall Length C	Taper D	Hole Depth G	Face Dia. H	Water Hole Dia. E
Class 1	Class 2	Class 3						
1712	3712	5712	.482	1-1/4	4RW	3/4	3/16	9/32
1713	3713	5713		1-1/2		1		
1715	3715	5715		2		1-1/2		
1717	3717	5717		2-1/2		2		
1718	3718	5718		2-3/4		2-1/4		
1723	3723	5723	.625	1-1/2	5RW	3/4	1/4	3/8
1725	3725	5725		2		1-1/4		
1727	3727	5727		2-1/2		1-3/4		
1729	3729	5729		3		2-1/4		
17218	37218	57218		4		3-1/4		



TRUNCATED NOSE (E)



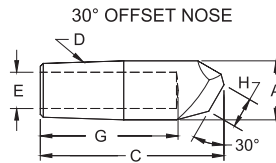
RADIUS (F)								
CMW® 28	CMW® 3	CMW® 100	Major Dia. A	Overall Length C	Taper D	Hole Depth G	Spherical Radius R	Water Hole Dia. E
Class 1	Class 2	Class 3						
1523	3523	5523	.625	1-1/2	5RW	3/4	2	3/8
1525	3525	5525		2		1-1/4		
1527	3527	5527		2-1/2		1-3/4		
1529	3529	5529		3		2-1/4	10	
15218	35218	55218		4		3-1/4		
1623	3623	5623		1-1/2		3/4	3	
1625	3625	5625		2		1-1/4		
1627	3627	5627		2-1/2		1-3/4		
1629	3629	5629		3		2-1/4	4	
16218	36218	56218		4		3-1/4		
1825	3825	5825		2		1-1/4	3	
1829	3829	5829		3		2-1/4		
1925	3925	5925	2	1-1/4	4			
1929	3929	5929	3	2-1/4				



RADIUS NOSE (F)



30° OFFSET								
CMW® 28	CMW® 3	Major Dia. A	Overall Length C	Taper D	Hole Depth G	Face Dia. H	Water Hole Dia. E	
Class 1	Class 2							
16-2491	16-2494	.482	2	4RW	1-1/2	1/4	9/32	
16-2492	16-2495	.625	2-1/2	5RW	2	3/8	3/8	
16-2493	16-2496	.875	3	7RW	2-1/4	1/2	1/2	



30° OFFSET NOSE

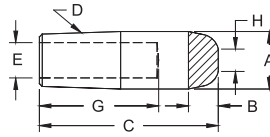


- See page 6 for Metric conversions, & See page 7 for Taper dimensions

ELKONITE® AND ELKON® FACED STRAIGHT ELECTRODES

ELKONITE® AND ELKON® DOME NOSE									
Elkonite® 10W3 Face	Elkon® 100M Face	Elkon® 100W Face	Major Dia. A	Nose Length B	Overall Length C	Taper D	Hole Depth G	Face Dia. H	Water Hole Dia. E
611050	811050	911050	.482	3/16	2	4RW	1-1/2	1/8	9/32
612050	812050	912050	.625	1/4		5RW			3/8

DOME NOSE

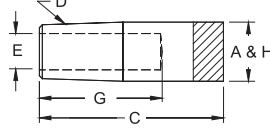


DOME NOSE



ELKONITE® AND ELKON® FLAT NOSE											
Elkonite® Face	Elkon® Face	Major Dia. A	Nose Length B	Overall Length C	Taper D	Hole Depth G	Face Dia. H	Water Hole Dia. E			
631050	831050	931050	.482	3/16	2	4RW	1-1/2	.482	9/32		
632030	832050	932050	.625	1/4	1-1/2	5RW	1	5/8	3/8		
632050										2	1-1/2
632070										2	2-1/2
16-1353											
633050	833050	933050	.875	1/4	2	7RW	1-1/2	7/8	1/2		

FLAT NOSE

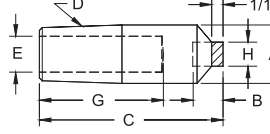


FLAT NOSE



ELKON® CENTERED INSERT NOSE								
Elkon® Face	Major Dia. A	Nose Length B	Overall Length C	Taper D	Hole Depth G	Face Dia. H	Water Hole Dia. E	
871050	971050	.482	3/8	2	4RW	1-1/2	3/16	9/32
872050	972050	.625	3/8	2	5RW	1-1/4	1/4	3/8

INSERT NOSE



INSERT NOSE



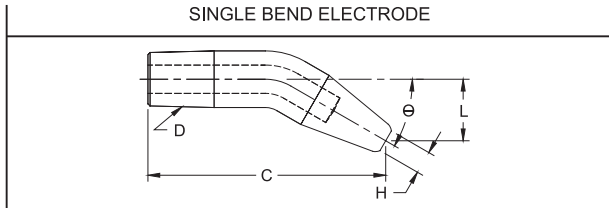
- Electrodes of other tapers and alloys available upon request. For other ELKONITE® and ELKON® materials see page 5 and for other recommended uses see the chart on page 76. Electrodes faced with material other than those shown on this page are available to special order.



CMW[®]3 single bend electrodes are cold formed from full hard straight electrodes, and have properties superior to those obtained by casting or hot forging methods. Cooling tubes are bent in place, if requested, to provide water flow as near to the welding face as in the case of straight electrodes. These extra value assure you a more efficient, less costly electrode for gun welders and special offset welding applications.

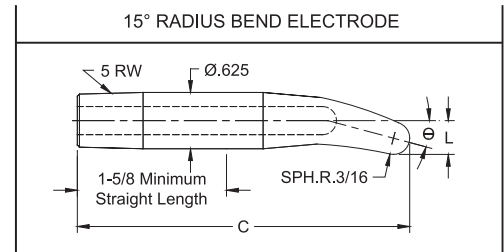
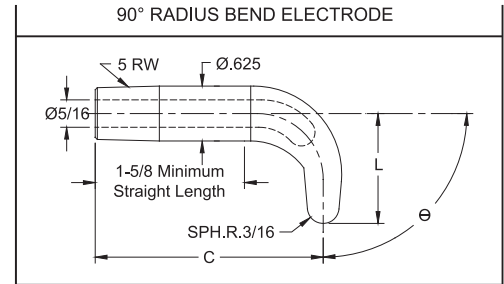
Furnished with water tubes as specials to your order. Other nose types available to order. For dimensions not shown here see straight electrode (round wall hole) measurements on page 14, 15, & 16. CMW[®]28 material available on special order.

SINGLE BEND ELECTRODES



PART No.	Reference Length to ϕ of Face C	Taper D	Offset ϕ of Taper to ϕ of Face L	Bend Angle θ	Bend Weld Face Dia. H	
3214-04-15	1-11/16	4 RW	1/4	15°	3/16	
3219-04-15	2-15/16		1/4			
32118-13-15	3-7/8		13/16			
3225-04-15	1-7/8	5 RW	1/4		15°	1/4
3229-04-15	2-7/8		1/4			
32218-10-15	3-13/16		5/8			
3215-07-30	1-7/8	4 RW	7/16	30°	3/16	
3219-07-30	2-7/8		7/16			
32118-23-30	3-5/8		1-7/16			
3226-09-30	2-1/16	5 RW	9/16		30°	1/4
32212-09-30	3-1/16		9/16			
32220-24-30	3-13/16		1-1/2			
3215-10-45	1-11/16	4 RW	5/8	45°	3/16	
32112-12-45	2-7/8		3/4			
32118-33-45	3-1/8		2-1/16			
3228-17-45	2-1/4	5 RW	1-1/16		45°	1/4
32214-17-45	3		1-1/16			
32220-33-45	3-3/8		2-1/16			
3218-23-60	2	4 RW	1-7/16	60°	3/16	
32116-23-60	3		1-7/16			
32118-40-60	2-5/8		2-1/2			
32212-25-60	2-3/8	5 RW	1-9/16		60°	1/4
32218-25-60	3-1/8		1-9/16			
32220-38-60	3		2-3/8			
32216-35-75	2-5/16	5 RW	2-3/16	75°	1/4	
32220-37-75	2-11/16		2-5/16			
32220-43-75	2-3/8		2-11/16			

Bend dimensions are for reference only

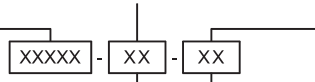


PART No.	O.A.L. C	Offset ϕ of Taper to Top of Radius L	Bend Angle θ
16-26015	3-11/16	3/8	15°
16-26030	3-5/8	33/64	30°
16-26045	3-1/2	43/64	45°
16-26060	3-3/8	27/32	60°
16-26075	3-7/64	1-1/32	75°
16-26090	2-13/16	1-1/4	90°

Radius bend electrodes are designed for use with 18-768 & 18-784 straight universal adapters shown on page 46.

- See page 6 for Metric Conversion
- See page 7 for Taper Dimensions

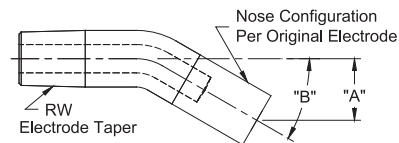
Original Electrode "A" Offset 1/16 Increments "B" Bend In Degrees



04 = 1/4	26 = 1-5/8	15 = 15° Bend
06 = 3/8	28 = 1-3/4	30 = 30° Bend
08 = 1/2	30 = 1-7/8	45 = 45° Bend
10 = 5/8	32 = 2	60 = 60° Bend
12 = 3/4	34 = 2-1/8	75 = 75° Bend
14 = 7/8	36 = 2-1/4	90 = 90° Bend
16 = 1	38 = 2-3/8	
18 = 1-1/8	40 = 2-1/2	
20 = 1-1/4	42 = 2-5/8	
22 = 1-3/8	44 = 2-3/4	
24 = 1-1/2	46 = 2-7/8	

Example:
3319-08-15
= 1/2 Offset
= 15° Bend

SINGLE BEND ELECTRODE CODING SYSTEM
For electrodes not listed



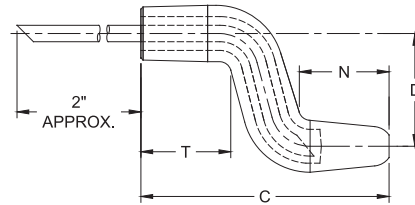


Offset D	Taper Size	Nose End		Taper End		Dome, Pointed & Flat, O.A.L. C	Pointed Nose Part No.
		N	T	T	T		
1/2	4 RW	3/4	7/8	2	2	321-0832-23	
		3/4	7/8	2-1/2	2-1/2	321-0840-23	
		2	7/8	3-1/4	3-1/4	321-0852-93	
	5 RW	1	1	2-1/2	2-1/2	322-0840-44	
		1	1	2-3/4	2-3/4	322-0844-44	
		2	1	3-1/4	3-1/4	322-0852-44	
3/4	4 RW	3/4	7/8	2	2	321-1232-23	
		3/4	7/8	2-1/2	2-1/2	321-1240-23	
		2	7/8	3-1/2	3-1/2	321-1256-93	
	5 RW	1	1	2-3/4	2-3/4	322-1244-44	
		1	1	3	3	322-1248-44	
		2	1	3-1/2	3-1/2	322-1256-94	
1	4 RW	3/4	7/8	2-1/4	2-1/4	321-1636-23	
		3/4	7/8	2-3/4	2-3/4	321-1644-23	
		1-3/4	7/8	3-1/4	3-1/4	321-1652-83	
		3/4	7/8	3-1/2	3-1/2	321-1656-23	
	5 RW	1	1	2-3/4	2-3/4	322-1644-44	
		1-3/4	1	3-1/2	3-1/2	322-1656-84	
1-1/4	4 RW	3/4	7/8	2-1/2	2-1/2	321-2040-23	
		3/4	7/8	3	3	321-2048-23	
		1-1/2	7/8	3	3	321-2048-73	
	5 RW	1	1	2-3/4	2-3/4	322-2044-44	
		1	1	3-1/4	3-1/4	322-2052-44	
		1-1/2	1	3-1/2	3-1/2	322-2056-44	
1-1/2	5 RW	1	1	2-3/4	2-3/4	322-2444-44	
		1-1/4	1	3	3	322-2448-64	
		1-1/4	1	3	3	322-2448-64	
	5 RW	1	1	2-3/4	2-3/4	322-2844-44	
		1-1/4	1	3	3	322-2848-64	
		1-1/4	1	3	3	322-2848-64	

DOUBLE BEND ELECTRODES

CMW double bend electrodes are cold formed from full hard straight electrodes, and have properties superior to those obtainable by casting or hot forging methods. Cooling tubes, unless otherwise specified are bent in place to provide coolant flow near the welding face as in the case of straight electrodes. These extra values assure you of longer electrode life, longer runs between dressings, and highest weld quality. CMW®3 material is standard for these electrodes. CMW®28, CMW®100, available on special order.

DOUBLE BEND POINTED NOSE

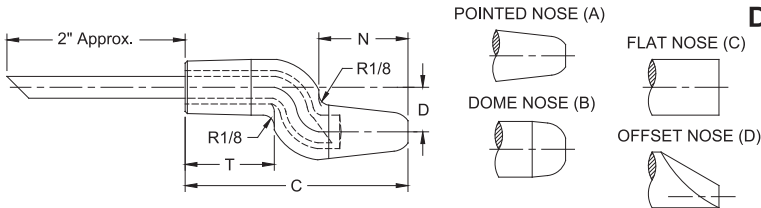


Bent dimensions are for reference only



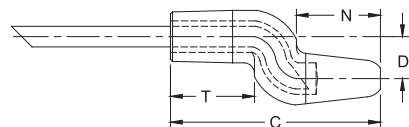
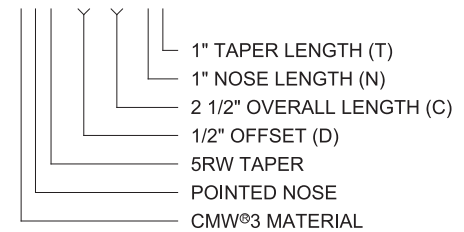
Water Tube Sizes:
4RW = .182 O.D.
5RW = .245 O.D.

DOUBLE BEND ELECTRODE CODING SYSTEM



EXAMPLE:

322-0840-44



BENT DIMENSIONS REFERENCE ONLY

Offset (D) Overall Length (C) Nose Length (N) Taper Length (T) Optional Without Water Tube

Taper Nose Material

X X X - X X X X X X X Z

1= CMW®28	1= DOME	1= 4RW 1MT	08= 1/2"	32= 2"	2= 3/4"
3= *CMW®3	2= *POINTED	2= 5RW 2MT	12= 3/4"	36= 2 1/4"	3= 7/8"
5= CMW®100	3= FLAT		16= 1"	40= 2 1/2"	4= 1"
*Standard	4= OFFSET		20= 1 1/4"	44= 2 3/4"	** 5= 1 1/8"
			24= 1 1/2"	48= 3"	** 6= 1 1/4"
			28= 1 3/4"	52= 3 1/4"	** 7= 1 1/2"
			Water Tube Sizes:	56= 3 1/2"	** 8= 1 3/4"
			4RW = .182 O.D.	60= 3 3/4"	** 9= 2"
			5RW = .245 O.D.		

**May not be a stock item

Standard 4RW nose length = 3/4"

Standard 4RW taper length = 7/8"

Standard 5RW nose & taper length = 1"

- See Page 6 for Metric Conversion
- See Page 7 for Taper Dimensions



FEATURES AND SPECIFICATIONS

- Very strong bend electrodes for higher force applications

- Bent & Offset electrodes are for hard to reach locations

- Long lasting heavy duty electrodes

- Works with all industry standard holders

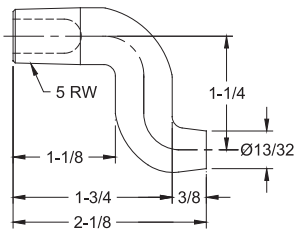
- Use with 4 & 5 R.W.M.A Holders

- Bent dimensions are for reference only

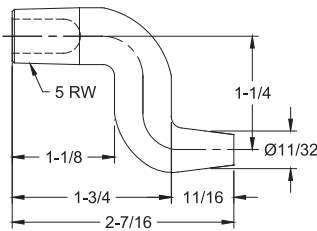
- Electrical conductivity up to 85% IACS for cold formed crank electrodes

- Rockwell hardness up to 83 HRB for cold formed crank electrodes

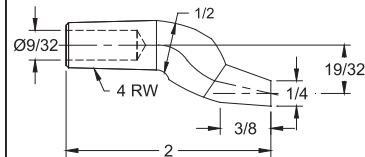
CRANK ELECTRODES - COLD FORMED



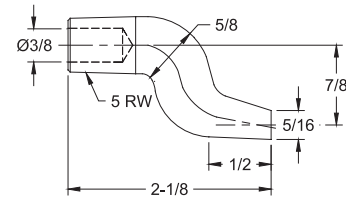
16-38661 CMW[®]3
COLD FORMED*



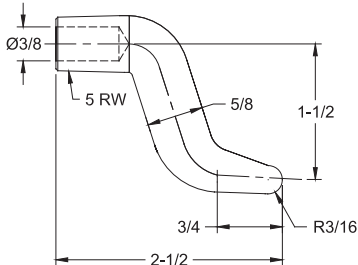
16-3866 CMW[®]3
COLD FORMED*



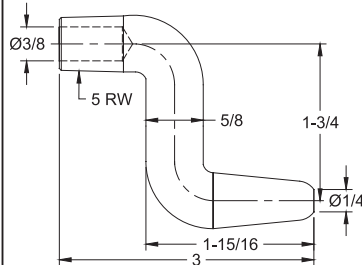
16-3870 CMW[®]3
COLD FORMED*



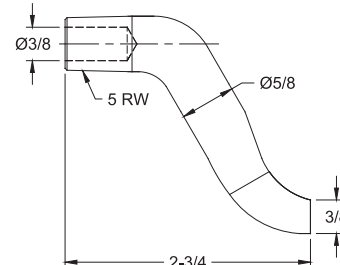
16-3871 CMW[®]3
COLD FORMED*



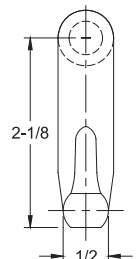
16-38351 CMW[®]3
COLD FORMED*



16-38352 CMW[®]3
COLD FORMED*



16-38353 CMW[®]3
COLD FORMED*



*Optional materials CMW[®]28 and CMW[®]100 available on special order



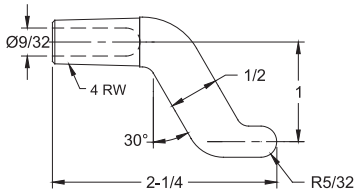
FEATURES AND SPECIFICATIONS

- Very strong bend electrodes for higher force applications
- Offset electrodes are for hard to reach locations
- Long lasting heavy duty electrodes

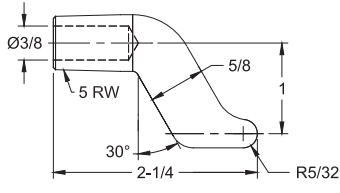
- Can be used in many job shop applications
- Works with all industry standard holders
- Use with 4 & 5 R.W.M.A Holders

- Electrical conductivity up to 80% IACS for castings & forged crank electrodes
- Rockwell hardness up to 70 HRB for castings & forged crank electrodes

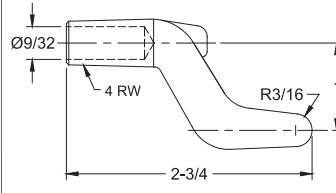
CRANK ELECTRODES - CASTING, FORGED



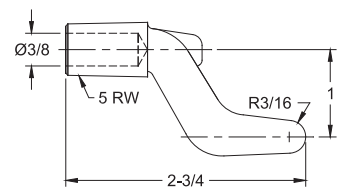
16-3835 CMW[®]3
CASTING



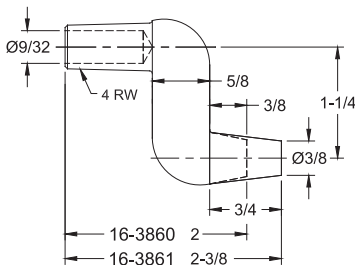
16-3836 CMW[®]3
CASTING



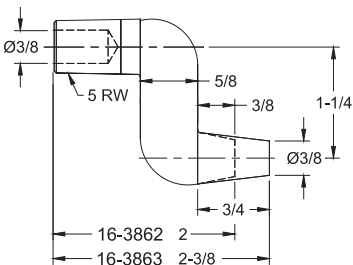
16-3837 CMW[®]3
CASTING



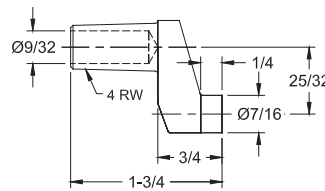
16-3838 CMW[®]3
CASTING



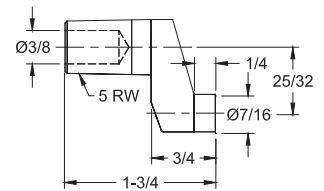
CMW[®]3
FORGED



CMW[®]3
FORGED



16-3873 CMW[®]3
CASTING



16-3874 CMW[®]3
CASTING

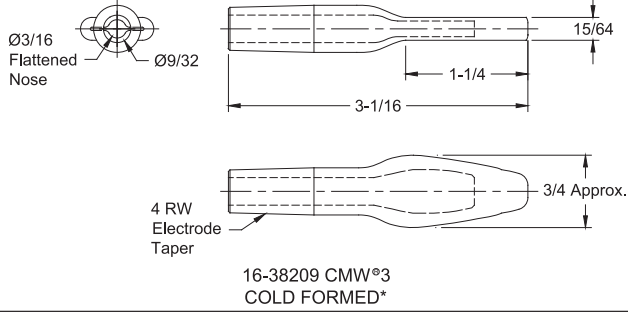


SPADE ELECTRODES

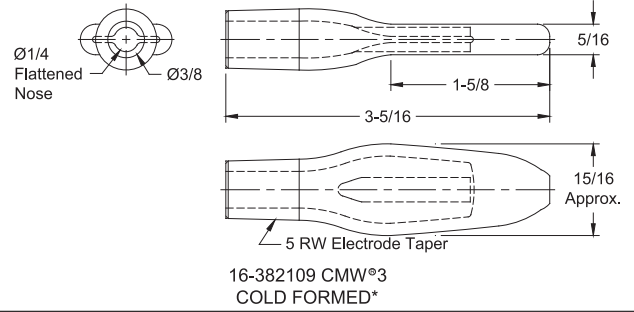
- See page 6 for
Metric Conversions
- See page 7 for
Taper Dimensions



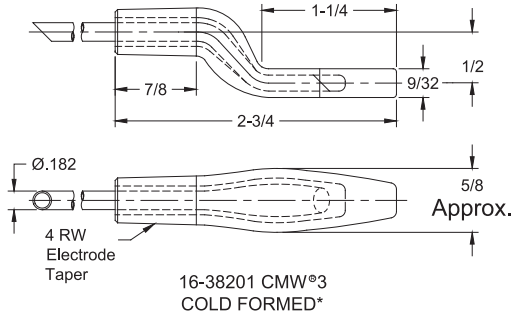
Bent Dimensions for Reference Only



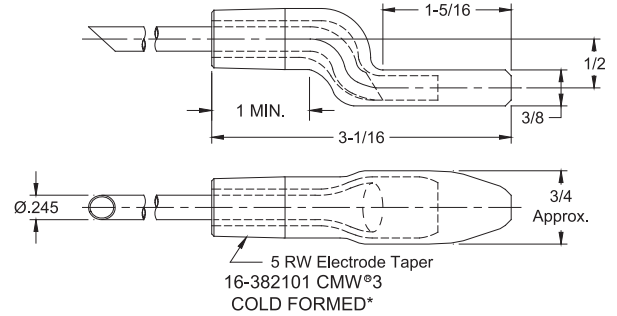
Bent Dimensions for Reference Only



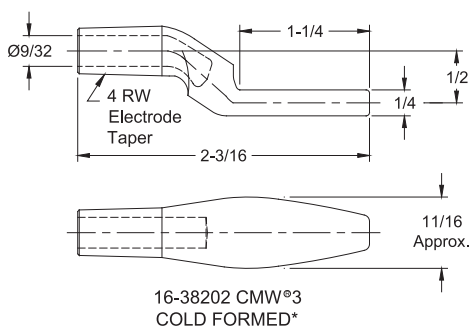
Bent Dimensions for Reference Only



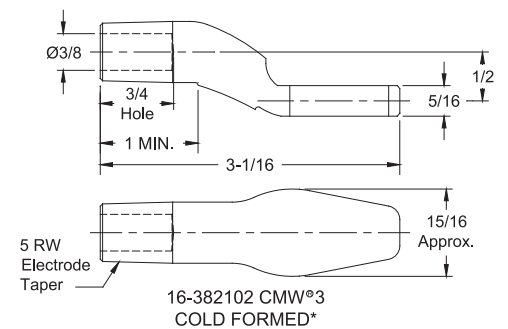
Bent Dimensions for Reference Only



Bent Dimensions for Reference Only



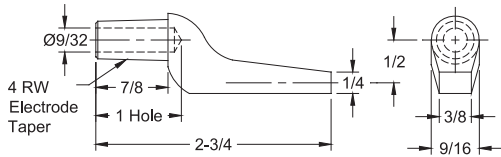
Bent Dimensions for Reference Only



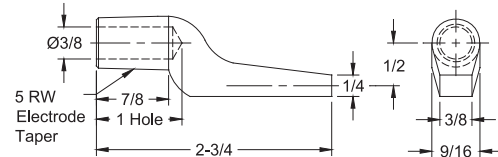
*Optional material available on special order: CMW®28 & CMW®100



GUN ELECTRODES



16-3820 CMW[®]3
CASTING

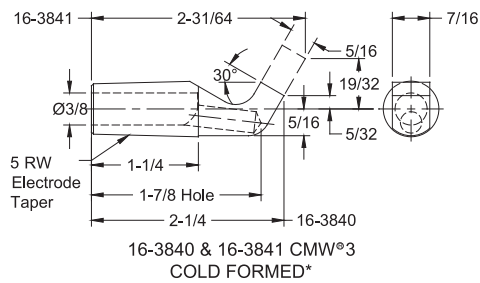


16-3821 CMW[®]3
CASTING

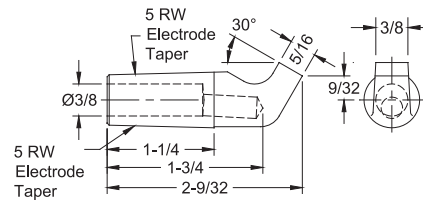


Bent Dimensions for Reference Only

Bent Dimensions for Reference Only

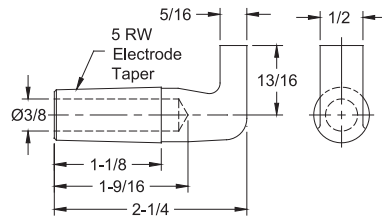


16-3840 & 16-3841 CMW[®]3
COLD FORMED*



16-3847 CMW[®]3
COLD FORMED*

*Optional material CMW[®]28 & CMW[®]100 available on special order.

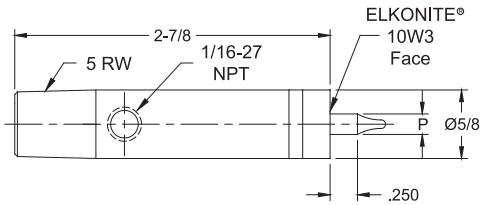
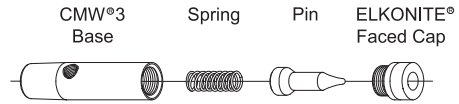


16-382120 CMW[®]3
CASTING

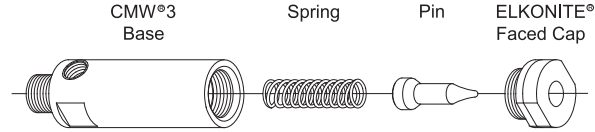
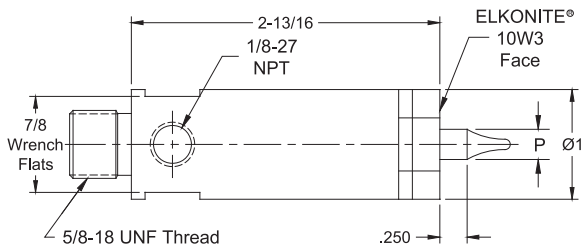
- See page 6 for
Metric Conversions
- See page 7 for
Taper Dimensions



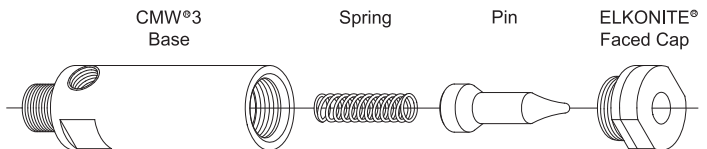
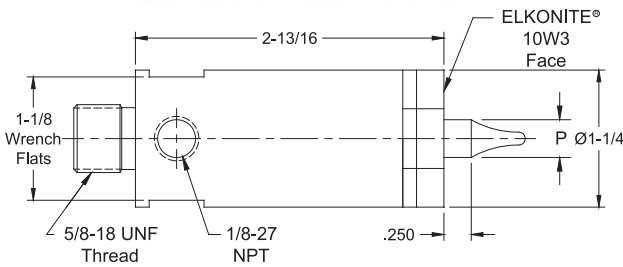
CHAMELEON/MAX-LIFE™ NUT WELDING ELECTRODES



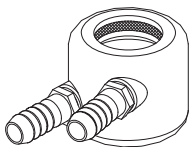
Nut Welding Assemblies	Nut Thread Size	Pin Dia. P	CMW®3 Base	Spring	Ceramic Coated Stainless Steel Pin	ELKONITE® Faced Cap
16-37725-04	#4	.142	16-37325	16-950078-01	16-950064-04	16-37725-C04
16-37725-05	#5	.158	16-37325	16-950078-01	16-950064-05	16-37725-C05
16-37725-06	#6	.173	16-37325	16-950078-01	16-950064-06	16-37725-C06
16-37725-M4	4MM	.187	16-37325	16-950078-01	16-950064-M4S	16-37725-CM4
16-37725-08	#8	.198	16-37325	16-950078-01	16-950064-08	16-37725-C08
16-37725-10	#10	.220	16-37325	16-950078-01	16-950064-10	16-37725-C10
16-37725-M5	5MM	.226	16-37325	16-950078-01	16-950064-M5S	16-37725-CM5
16-37725-12	#12	.250	16-37325	16-950078-01	16-950064-12	16-37725-C12
16-37725-M6	6MM	.266	16-37325	16-950078-01	16-950064-M6S	16-37725-CM6
16-37725-25	.250	.283	16-37325	16-950078-01	16-950064-25	16-37725-C25



Nut Welding Assemblies	Nut Thread Size	Pin Dia. P	CMW®3 Base	Spring	Ceramic Coated Stainless Steel Pin	ELKONITE® Faced Cap
16-37825-M4	4MM	.187	16-37825	16-950065-01	16-950064-M4	16-37825-CM4
16-37825-M5	5MM	.226	16-37825	16-950065-01	16-950064-M5	16-37825-CM5
16-37825-M6	6MM	.266	16-37825	16-950065-01	16-950064-M6	16-37825-CM6
16-37825-M7	7MM	.305	16-37825	16-950065-01	16-950064-M7	16-37825-CM7
16-37825-M8	8MM	.344	16-37825	16-950065-01	16-950064-M8	16-37825-CM8
16-37825-M9	9MM	.384	16-37825	16-950065-01	16-950064-M9	16-37825-CM9

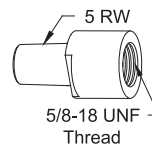


Nut Welding Assemblies	Nut Thread Size	Pin Dia. P	CMW®3 Base	Spring	Ceramic Coated Stainless Steel Pin	ELKONITE® Faced Cap
16-37826-M10	10MM	.423	16-37826	16-950065-01	16-950064-M10	16-37826-CM10
16-37826-M11	11MM	.463	16-37826	16-950065-01	16-950064-M11	16-37826-CM11
16-37826-M12	12MM	.502	16-37826	16-950065-01	16-950064-M12	16-37826-CM12
16-37826-M14	14MM	.581	16-37826	16-950065-01	16-950064-M14	16-37826-CM14



External Electrode Cooling Chamber

Electrode Dia.	Cooling Chamber Part No.	Tapered Adapter Part No.
5/8	18-1340	--
1	18-1342	18-7741
1-1/4	18-1343	18-7742



Tapered Adapter

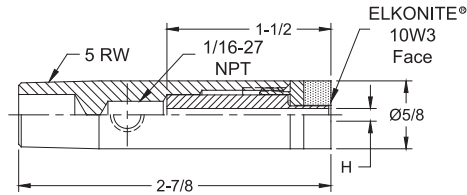
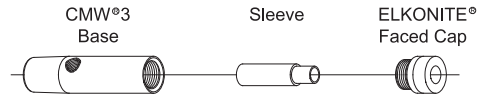
- Electrode Assemblies 16-37825-XX and 16-37826-XXX may be used with 5/8-18 threaded holders 18-169, 18-170, 18-171, shown on page 32

- Electrode Assemblies 16-37825-XX and 16-37826-XXX may be used with Platen Mounted holders (page 61) by using adapter 18-7743 shown on page 31

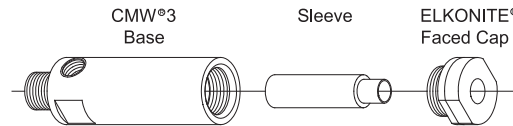
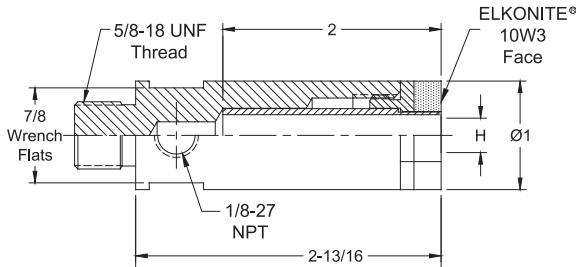
All dimensions are in inches unless otherwise noted



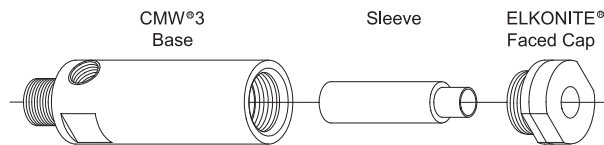
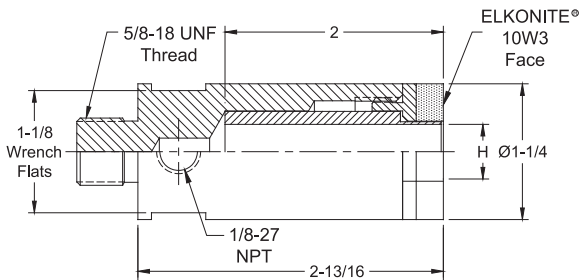
CHAMELEON/MAX-LIFE™ STUD WELDING ELECTRODES



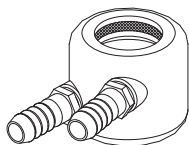
Stud Welding Assemblies	Screw Thread Size	Sleeve I.D. H	CMW®3 Base	Ceramic Coated Stainless Steel Sleeve	ELKONITE® Faced Cap
16-37325-116	#4	.116	16-37325	16-953116	16-37325-C116
16-37325-132	#5	.132	16-37325	16-953132	16-37325-C132
16-37325-140	#6	.140	16-37325	16-953140	16-37325-C140
16-37325-169	#8	.169	16-37325	16-953169	16-37325-C169
16-37325-169	4MM	.169	16-37325	16-953169	16-37325-C169
16-37325-191	#10	.191	16-37325	16-953191	16-37325-C191
16-37325-204	5MM	.204	16-37325	16-953204	16-37325-C204
16-37325-220	#12	.220	16-37325	16-953220	16-37325-C220
16-37325-243	6MM	.243	16-37325	16-953243S	16-37325-C243
16-37325-254	.250	.254	16-37325	16-953254S	16-37325-C254



Stud Welding Assemblies	Screw Thread Size	Sleeve I.D. H	CMW®3 Base	Ceramic Coated Stainless Steel Sleeve	ELKONITE® Faced Cap
16-37525-243	6MM	.243	16-37825	16-953243	16-37525-C243
16-37525-254	.250	.254	16-37825	16-953254	16-37525-C254
16-37525-320	.312	.320	16-37825	16-953320	16-37525-C320
16-37525-320	8MM	.320	16-37825	16-953320	16-37525-C320
16-37525-380	.375	.380	16-37825	16-953380	16-37525-C380

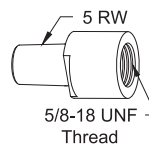


Stud Welding Assemblies	Screw Thread Size	Sleeve I.D. H	CMW®3 Base	Ceramic Coated Stainless Steel Sleeve	ELKONITE® Faced Cap
16-37526-399	10MM	.399	16-37526	16-953399	16-37526-C399
16-37526-444	.438	.444	16-37526	16-953444	16-37526-C444
16-37526-477	12MM	.477	16-37526	16-953477	16-37526-C477
16-37526-502	.500	.502	16-37526	16-953502	16-37526-C502
16-37526-630	.625	.630	16-37526	16-953630	16-37526-C630



External Electrode Cooling Chamber

Electrode Dia.	Cooling Chamber Part No.	Tapered Adapter Part No.
5/8	18-1340	--
1	18-1342	18-7741
1-1/4	18-1343	18-7742



Tapered Adapter

- Electrode Assemblies 16-37525-XXX and 16-37526-XXX may be used with 5/8-18 threaded holders 18-169, 18-170, 18-171, shown on page 32

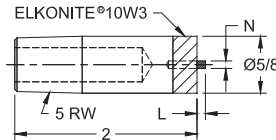
- Electrode Assemblies 16-37525-XXX and 16-37526-XXX may be used with Platen Mounted holders (page 61) by using adapter 18-7743 shown on page 31



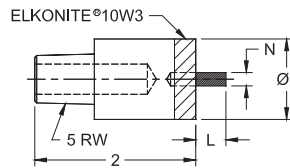
SELF-PILOTING NUT WELDING ELECTRODES



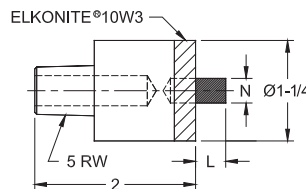
PART No.	Taper Size	Pin Dia. N	For Nut Thread Size	Pin Length L
16-3764-04	5 RW	.082	#4	.093
16-3764-05		.093	#5	
16-3764-06		.100	#6	
16-3764-M3.5		.107	3.5 MM	
16-3764-M4	5 RW	.123	4.0 MM	.156
16-3764-08		.129	#8	
16-3764-10		.143	#10	
16-3764-M5		.156	5.0 MM	



PART No.	Taper Size	Pin Dia. N	For Nut Thread Size	Pin Length L
16-3765-12	5 RW	.166	#12	.375
16-3765-M6		.189	6.0 MM	
16-3765-25		.192	1/4	
16-3765-M7		.223	7.0 MM	
16-3765-M8	5 RW	.252	8.0 MM	.375
16-3765-31		.257	5/16	
16-3765-M9		.291	9.0 MM	



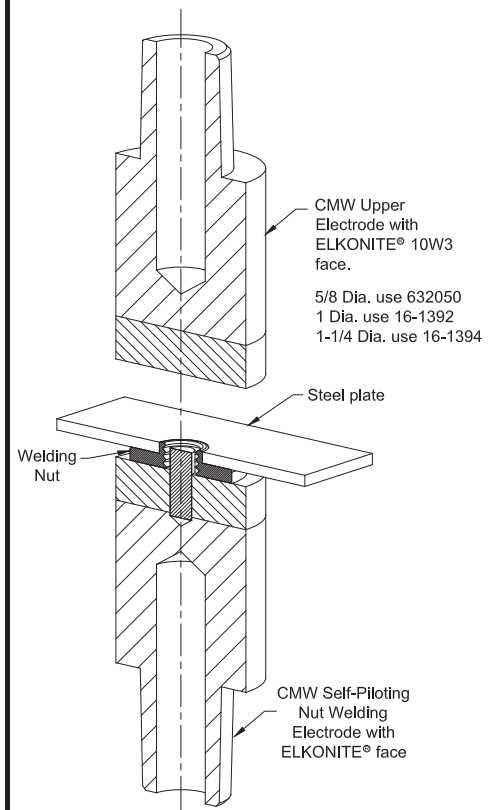
PART No.	Taper Size	Pin Dia. N	For Nut Thread Size	Pin Length L
16-3766-38	5 RW	.306	3/8	.375
16-3766-M10		.320	10 MM	
16-3766-M11		.359	11 MM	
16-3766-44		.361	7/16	
16-3766-M12	5 RW	.388	12 MM	.375
16-3766-50		.415	1/2	
16-3766-M14		.455	14 MM	



FEATURES AND SPECIFICATIONS

- ELKONITE®10W3 faced CMW® 3 material
- Insulated pin made of anodized aluminum
- Pins are treated to 55 HRC for wear resistance
- Use with tapered electrode holders
- Use with flat faced electrodes

TYPICAL SET-UP FOR SELF PILOTING NUTS



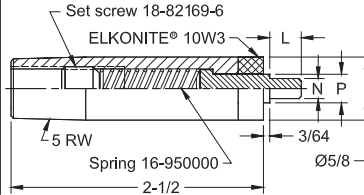
- See page 6 for Metric conversions
- See page 7 for Taper dimensions



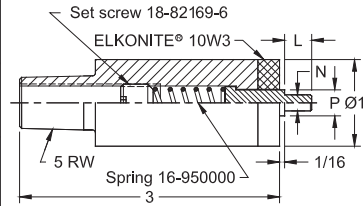
NON-PILOTING NUT WELDING ELECTRODES



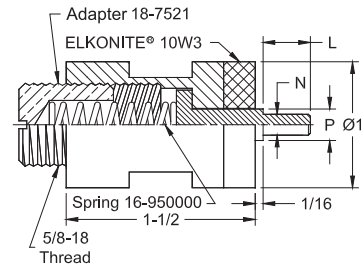
PART No.	Taper or Thd. Size	Pin Dia. N	Pilot Length L	Pilot Dia. P	For Nut Thd. Size N	Pin Part No.
16-3774-04		.082		.142	#4	16-950001-04
16-3774-05		.093		.158	#5	16-950001-05
16-3774-06		.100		.173	#6	16-950001-06
16-3774-08	5RW	.129	.312	.198	#8	16-950001-08
16-3774-10		.143		.220	#10	16-950001-10
16-3774-M6		.186		.250	6MM	16-950001-M6



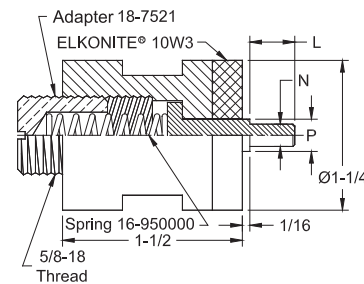
PART No.	Taper or Thd. Size	Pin Dia. N	Pilot Length L	Pilot Dia. P	For Nut Thd. Size N	Pin Part No.
16-3775-12		.166		.250	#12	16-950001-12
16-3775-M6		.186		.250	6MM	16-950001-M6
16-3775-25		.192		.283	1/4	16-950001-25
16-3775-M8	5RW	.252	.312	.283	8MM	16-950001-M8
16-3775-31		.257		.345	5/16	16-950001-31
16-3775-M10		.322		.347	10MM	16-950001-M10



PART No.	Taper or Thd. Size	Pin Dia. N	Pilot Length L	Pilot Dia. P	For Nut Thd. Size N	Pin Part No.
16-3785-12	5/8-18	.166	.375	.250	#12	16-950002-12
16-3785-M6		.186		.269	6MM	16-950002-M6
16-3785-25		.192		.283	1/4	16-950002-25
16-3785-M8		.252		.348	8MM	16-950002-M8
16-3785-31		.257		.345	5/16	16-950002-31
16-3785-M10		.320		.427	10MM	16-950002-M10
16-3785-M11		.359		.466	11MM	16-950002-M11
16-3785-M12		.388		.470	12MM	16-950002-M12



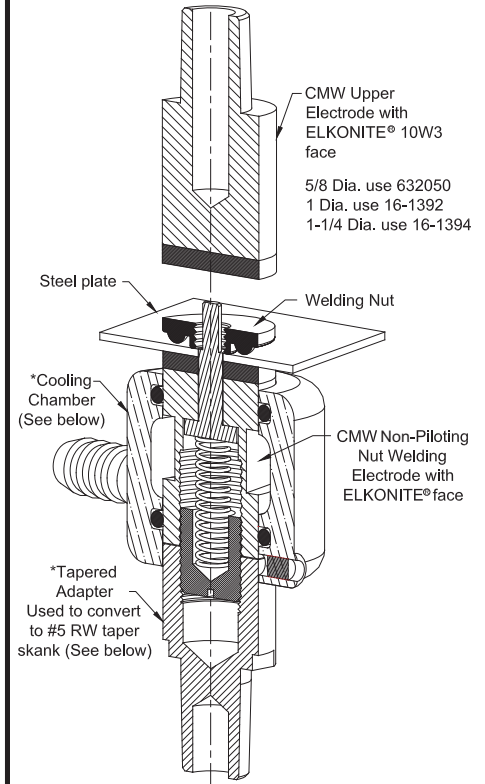
PART No.	Taper or Thd. Size	Pin Dia. N	Pilot Length L	Pilot Dia. P	For Nut Thd. Size N	Pin Part No.
16-3786-12	5/8-18	.166	.375	.250	#12	16-950002-12
16-3786-M6		.186		.269	6MM	16-950002-M6
16-3786-25		.192		.283	1/4	16-950002-25
16-3786-M8		.252		.348	8MM	16-950002-M8
16-3786-31		.257		.345	5/16	16-950002-31
16-3786-38		.306		.408	3/8	16-950002-38
16-3786-M10		.320		.427	10MM	16-950002-M10
16-3786-M11		.359		.466	11MM	16-950002-M11
16-3786-44		.361		.470	7/16	16-950002-44
16-3786-M12		.388		.470	12MM	16-950002-M12
16-3786-50		.415		.533	1/2	16-950002-50



FEATURES AND SPECIFICATIONS

- ELKONITE® 10W3 faced CMW®3 material
- Insulated pin made of anodized aluminum
- Insulated pins are treated to 55 HRC for wear resistance
- Use with tapered electrode holders
- Use with flat faced electrodes
- Accepts external cooling chambers

TYPICAL SET-UP FOR NON PILOTING NUTS



*For additional information on cooling chamber and tapered adapter see page 27

Electrode assemblies 18-3785-XX and 18-3786-XX may be used with 5/8-18 threaded holders 18-169, 18-170, 18-171



FEATURES AND SPECIFICATIONS

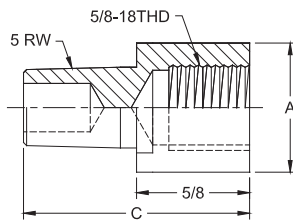
- Cooling Chamber recommended for additional cooling capacity on internally cooled applications
- Cooling Chamber is designed to provide supplementary cooling in special, hard to cool applications

- Securely sealed and locked in position with allen head set screw
- Tapered Adapter converts 5/8-18 thread to 5 RW tapers
- Use with Stud/Nut welding applications

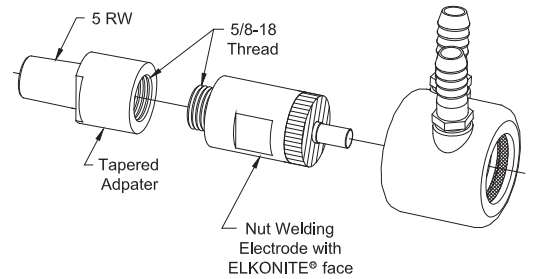
WELDING ELECTRODE ACCESSORIES



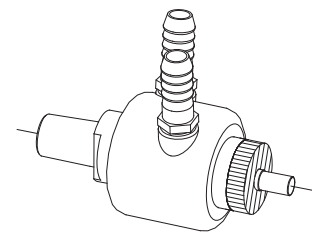
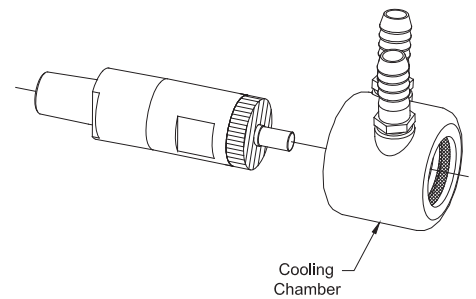
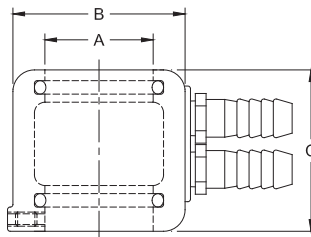
TAPERED ADAPTER			
Part No.	To Fit Dia. Electrode A	Taper	Overall Length C
18-7741	1	5 RW	1-3/4
18-7742	1-1/4	5 RW	1-3/4



TAPERED ADAPTER CONVERSION FROM 5/8-18 THREAD TO 5 RW TAPER



COOLING CHAMBER			
Part No.	To Fit Dia. Electrode A	O.D. B	Overall Length C
18-1340	5/8	1-1/4	1-1/2
18-1341	7/8	1-1/2	1-1/2
18-1342	1	1-3/4	1-1/2
18-1343	1-1/4	2	1-7/8



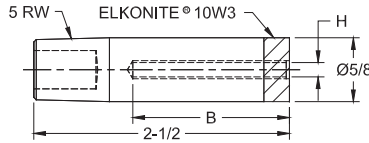
ASSEMBLED CONVERSION



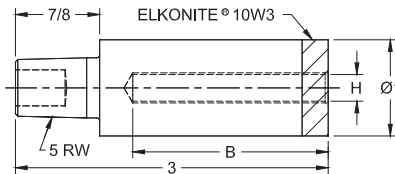
STUD WELDING ELECTRODES



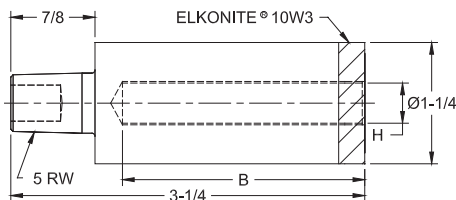
Assembled Electrode Part Number			Insulation I.D. H	Screw Thread Size
Depth B				
.375	.750	1.125	.116 .132	#4 #5
16-3724-1161	16-3724-1162	16-3724-1163		
16-3724-1321	16-3724-1322	16-3724-1323		
.500	1.000	1.500	.140 .150 .157 .169	#6 -- -- #8
16-3724-1401	16-3724-1402	16-3724-1403		
16-3724-1501	16-3724-1502	16-3724-1503		
16-3724-1571	16-3724-1572	16-3724-1573		
16-3724-1691	16-3724-1692	16-3724-1693		
.750	1.500	--	.191 .220 .254	#10 #12 .250
16-3724-1911	16-3724-1912			
16-3724-2201	16-3724-2202			
16-3724-2541	16-3724-2542			



Assembled Electrode Part Number		Insulation I.D. H	Screw Thread Size
Depth B			
.750	1.500	.254	.250
16-3725-2541	16-3725-2542		
1.000	2.000	.277 .317 (8MM) .339 .365 .380	-- .312 -- -- -- .375
16-3725-2771	16-3725-2772		
16-3725-3171	16-3725-3172		
16-3725-3391	16-3725-3392		
16-3725-3651	16-3725-3652		
16-3725-3801	16-3725-3802		



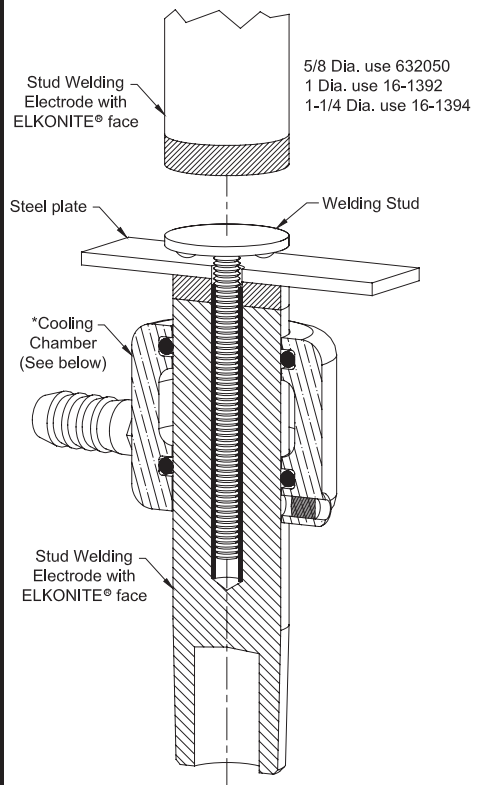
Assembled Electrode Part Number		Insulation I.D. H	Screw Thread Size
Depth B			
1.000	2.000	.401 .427 .444 .502	-- -- .437 .500
16-3726-4011	16-3726-4012		
16-3726-4271	16-3726-4272		
16-3726-4441	16-3726-4442		
16-3726-5021	16-3726-5022		
1.000	2.000	.552 .630 .676 .801	-- .625 -- --
16-3726-5521	16-3726-5522		
16-3726-6301	16-3726-6302		
16-3726-6761	16-3726-6762		
16-3726-8011	16-3726-8012		



FEATURES AND SPECIFICATIONS

- ELKONITE® 10W3 faced CMW*3 material
- Insulated sleeve made of anodized aluminum
- Insulated sleeve are treated to 55 HRC both I.D. & O.D. for wear resistance
- Use with tapered electrode holders
- Use with flat faced electrodes
- Accepts external Cooling Chambers

TYPICAL SET-UP FOR STUD WELDING



*For additional information on cooling chamber see page 27

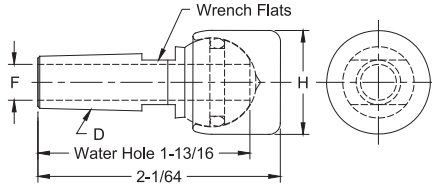
Electrode Dia.	Cooling Chamber
5/8	18-1340
1	18-1342
1-1/4	18-1343



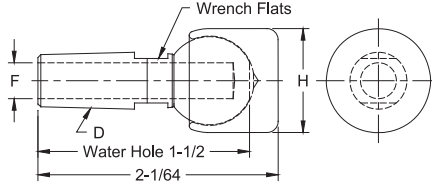
SWIVEL HEAD BACK-UP ELECTRODES

Standard material: Shank - CMW®3
Cap - CMW®3
Optional material available on special order:
Cap-CMW®100, ELKONITE® & ELKON® facing

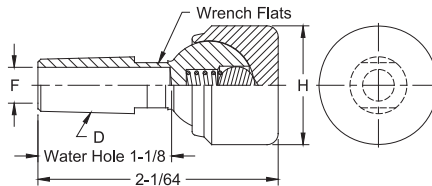
PART No.	Taper D	Water Hole Dia. F	Face Dia. H	Type
16-2304	4 RW	9/32	7/8	Thru hole with "O" ring
16-2305	5 RW	3/8	7/8	
16-2302	4 RW	9/32	1	
16-2303	5 RW	3/8	1	
16-2300	4 RW	9/32	1-1/4	
16-2301	5 RW	3/8	1-1/4	
16-2306	5 RW	3/8	1-1/2	



PART No.	Taper D	Water Hole Dia. F	Face Dia. H	Type
16-2314	4 RW	9/32	7/8	Blind hole
16-2315	5 RW	3/8	7/8	
16-2312	4 RW	9/32	1	
16-2313	5 RW	3/8	1	
16-2310	4 RW	9/32	1-1/4	
16-2311	5 RW	3/8	1-1/4	
16-2316	5 RW	3/8	1-1/2	

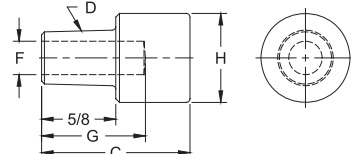


PART No.	Taper D	Water Hole Dia. F	Face Dia. H	Type
16-23129	4 RW	9/32	1	Blind hole with spring and ball
16-23139	5 RW	3/8	1	
16-23109	4 RW	9/32	1-1/4	
16-23119	5 RW	3/8	1-1/4	
16-23169	4 RW	9/32	1-1/2	
16-23179	5 RW	3/8	1-1/2	

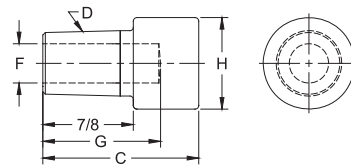


LARGE DIAMETER FLAT FACED BACK-UP ELECTRODES

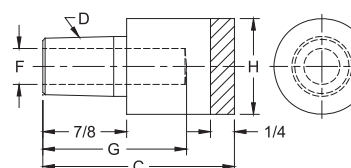
PART No.	Weld Face Material	O.A.L. C	Taper D	Water Hole		Weld Face Dia. H
				Dia. F	Depth G	
16-3012	CMW®3	1-1/4	4 RW	9/32	7/8	3/4
16-3010						1
16-3030						1-1/4



PART No.	Weld Face Material	O.A.L. C	Taper D	Water Hole		Weld Face Dia. H
				Dia. F	Depth G	
16-3021	CMW®3	1-1/2	5 RW	3/8	1-1/8	7/8
16-3020						1
16-3040						1-1/4
16-3050						1-1/2

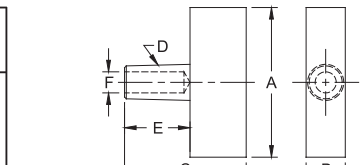


PART No.	Weld Face Material	O.A.L. C	Taper D	Water Hole		Weld Face Dia. H
				Dia. F	Depth G	
16-1392	ELKONITE® 10W3	2	5 RW	3/8	1-1/2	1
16-1393						1
16-1394						1-1/4
16-1395						1-1/4

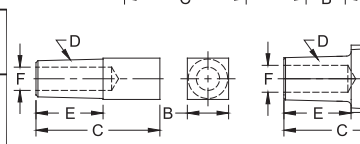


SQUARE & RECTANGULAR FACED BACK-UP ELECTRODES

PART No.	Weld Face Material	O.A.L. C	Taper D	Shank Length E	Water Hole Dia. F	Weld Face Lgth. A	Weld Face Width B
16-3111	2						
16-382160	1-1/2						
16-3121	2						



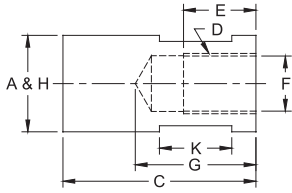
PART No.	Weld Face Material	O.A.L. C	Taper D	Shank Length E	Water Hole Dia. F	Weld Face Lgth. A	Weld Face Width B
16-3120	5/8						
16-384110	1/2						



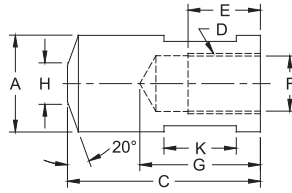
Other tapers and alloys available to special order



THREADED ELECTRODES



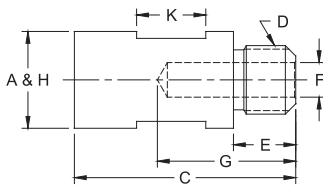
FEMALE FLAT



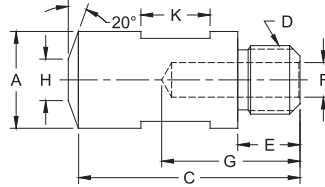
FEMALE TRUNCATED

CMW[®]3 FEMALE THREADED ELECTRODES

CMW [®] 3 PART No.	Type	O.A.L.	Thread	Major Dia.	Thread Depth	Water Hole Depth	Water Hole Dia.	Over Wrench Flats	Wrench Flat Length	Welding Face Dia.
		C	D	A	E	G	F		K	H
336508	Female Flat	2	5/8-18	1	3/4	1-1/4	37/64	7/8	3/4	1
336510				1-1/4	3/4			3/4	1-1/4	
336512				1-1/2	3/4			7/8	1-1/2	
326508	Female Truncat.	2	5/8-18	1	3/4	1-1/4	37/64	7/8	3/4	3/8
326510				1-1/4	3/4			3/4	1/2	
326512				1-1/2	3/4			7/8	5/8	



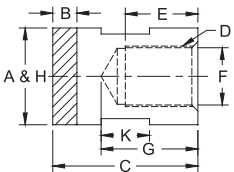
MALE FLAT



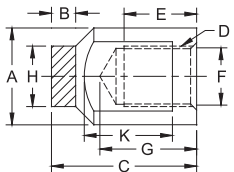
MALE TRUNCATED

CMW[®]3 MALE THREADED ELECTRODES

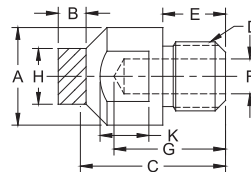
CMW [®] 3 PART No.	Type	O.A.L.	Thread	Major Dia.	Thread Depth	Water Hole Depth	Water Hole Dia.	Over Wrench Flats	Wrench Flat Length	Welding Face Dia.
		C	D	A	E	G	F		K	H
330507	Male Flat	2	5/8-18	7/8	9/16	1-1/4	5/16	3/4	5/8	7/8
330508			5/8-18	1	9/16		5/16	7/8	5/8	1
335506			5/8-11	3/4	15/32		5/16	5/8	1/2	3/4
335507			5/8-11	7/8	15/32		5/16	3/4	3/4	7/8
335508			3/4-10	1	5/8		3/8	7/8	7/8	1
335510	3/4-10	1-1/4	5/8	3/8	3/4	3/4	1-1/4			
335512	7/8-9	1-1/2	3/4	1/2	1-1/4	7/8	1-1/2			
325506	Male Truncat.	2	5/8-11	3/4	15/32	1-1/4	5/16	5/8	1/2	1/4
325507			5/8-11	7/8	15/32		5/16	3/4	5/8	5/16
325508			3/4-10	1	5/8		3/8	7/8	5/8	3/8
325510			3/4-10	1-1/4	5/8		3/8	3/8	3/4	1/2



ELKONITE[®] FACED FEMALE FLAT



ELKONITE[®] FACED FEMALE CENTERED



ELKONITE[®] FACED MALE CENTERED

ELKONITE[®] FACED MALE & FEMALE THREADED ELECTRODES

ELKONITE [®] 10W3 PART No.	Type	O.A.L.	Thread	Major Dia.	Thread Depth	Water Hole Depth	Water Hole Dia.	Over Wrench Flats	Wrench Flat Length	Welding Face Dia.	ELKONITE [®] Thickness		
		C	D	A	E	G	F		K	H	B		
636308	Female Flat	1-1/2	5/8-18	1	3/4	1	37/64	7/8	1/2	1	1/4		
636310				1-1/4	3/4			1	1-1/4	1-1/4			
636312				1-1/2	3/4			7/8	1-1/2				
626308	Female Centered	1-1/2	5/8-18	1	3/4	1	37/64	7/8	13/16	5/8	1/4		
626310				1-1/4	3/4			1	11/16	5/8			
620307	Male Centered	1-1/2	5/8-18	7/8	9/16	1	5/16	3/4	3/4	1/2	1/4		
625206				1-1/4	3/4			15/32	7/8	3/4		1/2	3/16
625308				1-5/8	1			5/8	1-3/16	3/8		7/8	5/8

FEMALE FLAT



FEMALE TRUNCATED



MALE FLAT



MALE TRUNCATED



ELKONITE[®] FACED FEMALE FLAT



ELKONITE[®] FACED FEMALE CENTERED



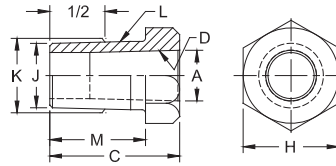
ELKONITE[®] FACED MALE CENTERED



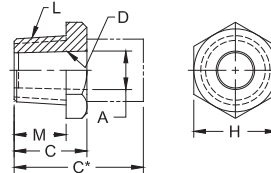


ADAPTERS

MALE TAPER TO FEMALE TAPER ADAPTERS								
Adapter Part No.	Male Taper			Female Taper		Length Under Head M	Hex. Over Flats H	Overall Length C
	Size L	Minor Dia. J	Dia. at 1/2 K	Size D	Major Dia. A			
18-741	5 RW	.588	.613	4 RW	.463	7/8	7/8	1-3/16
18-742	7 RW	.819	.844	5 RW	.625	1-3/16	1	1-1/2
18-7414	6 RW	.706	.731	5 RW	.625	7/8	1	1-3/16
18-7415	4 RW	.438	.463	5 RW	.625	5/8	7/8	1-3/4
18-7416	5 RW	.588	.613	6 RW	.750	7/8	1	2-1/4

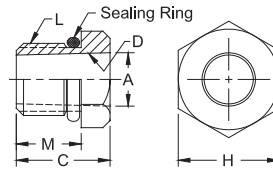


MALE PIPE THREAD TO FEMALE TAPER ADAPTERS						
Adapter Part No.	Male Thd. Size L	Female Taper		Length Under Head M	Hex. Over. Flats H	Overall Length C
		Size D	Major Dia. A			
18-746-07	1/2-14 pipe	4 RW	.463	5/8	1	7/8
18-747-07	1/2-14 pipe	5 RW	.625	5/8	1	7/8
18-7465-07	1/2-14 pipe	5 RW Male Cap	.414	9/16	7/8	7/8
18-748-06	5/8-14 pipe	4 RW	.463	9/16	1	3/4
18-749-06	5/8-14 pipe	5 RW	.625	9/16	1	3/4
18-756-09	3/4-14 pipe	4 RW	.463	7/8	1-1/4	1-1/8
18-757-09	3/4-14 pipe	5 RW	.625	7/8	1-1/4	1-1/8
18-7576-09	3/4-14 pipe	6 RW	.750	7/8	1-1/4	1-1/8



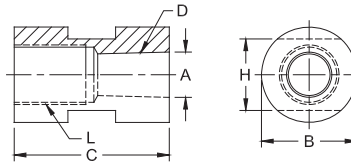
*Adapters of longer lengths available in 1/8" increments upon request

MALE THREAD TO FEMALE TAPER ADAPTERS							
Adapter Part No.	Male Thd. Size L	Female Taper		Length Under Head M	Hex or Dia. Over. Flats H	Overall Length C	Sealing Ring Part No.
		Size D	Major Dia. A				
18-750	5/8-18	4 RW	.463	9/16	7/8 Hex	13/16	18-10060-11
18-751	5/8-18	5 RW	.625	9/16	1 Hex	1-11/16	18-10060-11
18-755*	3/4-10	5 RW	.625	9/16	1 Dia.	1-9/16	18-10060-12
18-770	7/8-14	4 RW	.463	5/8	1 Hex	13/16	18-76460
18-771	7/8-14	5 RW	.625	5/8	1 Hex	13/16	18-76460
18-7743	1-14	5/8-18 Thd.	-	5/8	1-1/4 Hex	1	18-10060-17
18-785	1-14	4 RW	.463	9/16	1-1/4 Hex	13/16	18-10060-17
18-786	1-14	5 RW	.625	9/16	1-1/4 Hex	13/16	18-10060-17
18-7863	1-14	6 RW	.750	3/4	1-1/4 Hex	1-3/4	18-10060-17
18-787	1-14	7 RW	.875	3/4	1-1/4 Hex	2-1/8	18-10060-17
18-7875	1-14	5 RW	.625	9/16	1-1/4 Dia.	11/16	18-10060-17
18-7876	1-14	6 RW	.750	5/8	1-1/4 Dia.	7/8	18-10060-17



*This part has 3/4" wrench flats

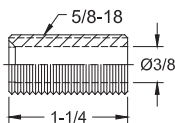
FEMALE THREAD TO FEMALE TAPER ADAPTERS						
Adapter Part No.	Female Thd. Size L	Female Taper		Outside Dia. B	Over Wrench Flats H	Overall Length C
		Size D	Major Dia. A			
18-753	5/8-18	4 RW	.475	1	3/4	1-5/8
18-754	5/8-18	5 RW	.625	1	3/4	1-5/8
18-7591	3/4-10	4 RW	.463	1-1/4 Hex.	1-1/4	1-3/4
18-7592	3/4-10	5 RW	.625	1-1/4 Hex.	1-1/4	1-3/4



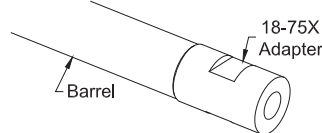
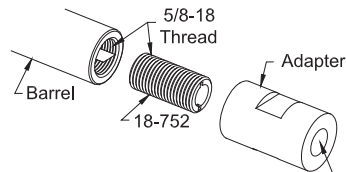
See page 6 for Metric Conversions
See page 7 for Taper Dimensions
See page 34 for ejector type adapters

CONVERSION FROM 5/8-18 THREAD INTO 4, 5, 6, RW TAPER

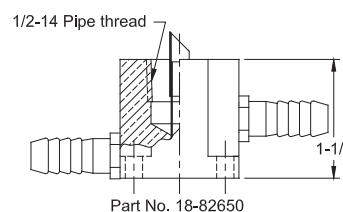
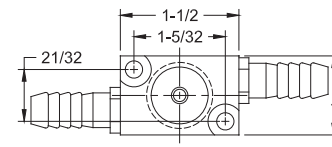
Part No. 18-752



Threaded adapter used with tapered adapter to convert holder to use tapered electrodes.



CONVERSION FROM THREADED ADAPTER INTO 4, 5, 6, RW TAPER



Part No. 18-82650

