



# Tuffaloy Products

## PRICE LIST For Standard Consumer Products

**Effective December 14, 2011**

For use with the current Tuffaloy catalog or with the website. Please consult them prior to ordering. Prices are subject to change without notice. Minimum single order must be of \$75.00 USD or greater.

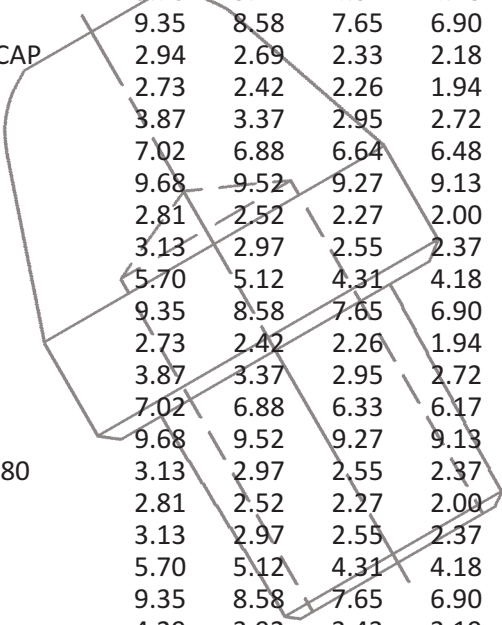
1400 South Batesville Road  
Greer, South Carolina 29650 USA  
www.tuffaloy.com  
Phone 001-864-879-0763  
Fax 001-864-877-2212

P.O. Box 670  
Marlborough Street  
Blenheim, Ontario, Canada NOP 1A0  
Phone 001-519-676-8173  
Fax 001-519-676-3329

Part Number	Part Description	1-24	25-49	50-99	100-249	250-499	500-999	1000-2999
-------------	------------------	------	-------	-------	---------	---------	---------	-----------

### MALE CAPS

111-0014	TA 14 TUFF CAP	2.73	2.42	2.26	1.94	1.57	1.49	1.39
111-0015	TA 15 CAP	3.87	3.37	2.95	2.72	1.92	1.84	1.83
111-0016	TA 16 CAP	7.02	6.88	6.33	6.17	4.11	3.77	3.51
111-0017	TA 17 TUFF CAP	9.12	8.96	8.74	8.59	8.31	7.56	6.36
112-0022	TA 22 TUFF CAP W/680	3.13	2.97	2.55	2.37	2.23	1.93	1.77
112-0024	TA 24 TUFF CAP	2.81	2.52	2.27	2.00	1.57	1.47	1.34
112-0025	TA-25 TUFF CAP	3.13	2.97	2.55	2.37	1.80	1.74	1.69
112-0026	TA 26 TUFF CAP	5.70	5.12	4.31	4.18	3.67	3.43	3.18
112-0027	TA 27 TUFF CAP	9.35	8.58	7.65	6.90	6.76	6.51	6.40
112-1024	TS-25Z-.5 'ZIRC' 85b CAP	2.94	2.69	2.33	2.18	2.04	1.81	1.73
113-0014	TB-14 TUFF CAP	2.73	2.42	2.26	1.94	1.57	1.49	1.39
113-0015	TB-15 TUFF CAP	3.87	3.37	2.95	2.72	1.92	1.84	1.83
113-0016	TB-16 TUFF CAP	7.02	6.88	6.64	6.48	6.36	5.77	4.88
113-0017	TB-17 TUFF CAP	9.68	9.52	9.27	9.13	8.83	8.02	6.76
114-0024	TB-24 TUFF CAP	2.81	2.52	2.27	2.00	1.57	1.47	1.34
114-0025	TB-25 TUFF CAP	3.13	2.97	2.55	2.37	1.83	1.77	1.73
114-0026	TB-26 TUFF CAP	5.70	5.12	4.31	4.18	3.67	3.43	3.18
114-0027	TB-27 TUFF CAP	9.35	8.58	7.65	6.90	6.76	6.51	6.40
115-0014	TC-14 TUFF CAP	2.73	2.42	2.26	1.94	1.57	1.49	1.39
115-0015	TC-15 TUFF CAP	3.87	3.37	2.95	2.72	1.92	1.84	1.83
115-0016	TC-16 TUFF CAP	7.02	6.88	6.33	6.17	4.11	3.77	3.51
115-0017	TC-17 TUFF CAP	9.68	9.52	9.27	9.13	8.83	8.02	6.76
116-0022	TC-22 TUFF CAP W/680	3.13	2.97	2.55	2.37	2.23	1.93	1.87
116-0024	TC-24 TUFF CAP	2.81	2.52	2.27	2.00	1.57	1.47	1.34
116-0025	TC-25 TUFF CAP	3.13	2.97	2.55	2.37	1.86	1.80	1.75
116-0026	TC-26 TUFF CAP	5.70	5.12	4.31	4.18	3.67	3.43	3.18
116-0027	TC-27 TUFF CAP	9.35	8.58	7.65	6.90	6.76	6.51	6.40
117-0014	TD-14 TUFF CAP	4.29	3.92	3.43	3.19	1.73	1.62	1.49
117-0015	TD-15 TUFF CAP	5.40	4.98	4.69	2.65	2.55	2.48	2.45
117-0016	TD-16 TUFF CAP	7.92	7.75	7.53	7.40	7.28	6.72	5.90
117-0017	TD-17 TUFF CAP	10.16	9.42	9.18	9.05	8.72	8.46	8.18
118-0022	TD-22 TUFF CAP/680 HOLE	3.95	3.63	3.05	2.95	2.60	2.32	2.10
118-0024	TD-24 TUFF CAP	4.13	3.79	3.25	3.00	1.71	1.58	1.47
118-0025	TD-25 TUFF CAP	4.41	4.06	3.38	3.30	2.00	1.94	1.86
118-0026	TD 26 TUFF CAP	7.28	6.69	5.76	5.32	4.17	4.03	3.86



Part Number	Part Description	1-24	25-49	50-99	100-249	250-499	500-999	1000-2999
-------------	------------------	------	-------	-------	---------	---------	---------	-----------

Part Number	Part Description	1-24	25-49	50-99	100-249	250-499	500-999	1000-2999
-------------	------------------	------	-------	-------	---------	---------	---------	-----------

## MALE CAPS

118-0027	TD-27 TUFF CAP	10.67	9.87	8.59	7.82	7.32	7.03	6.70
119-0014	TE 14 CAP	2.73	2.42	2.26	1.94	1.63	1.49	1.39
119-0015	TE-15 TUFF CAP	3.87	3.37	2.95	2.72	1.92	1.84	1.83
119-0024	TE 24 CAP	2.81	2.52	2.27	2.00	1.57	1.47	1.34
119-0025	TE-25 TUFF CAP	3.13	2.97	2.55	2.37	1.83	1.77	1.73
119-0026	TE-26 TUFF CAP	5.70	5.12	4.31	4.18	3.67	3.43	3.18
119-0027	TE 27 CAP	9.35	8.58	7.65	6.90	6.76	6.51	6.40
119-0114	TF 14 CAP	2.73	2.42	2.26	1.94	1.63	1.57	1.47
119-0115	TF 15 CAP	3.87	3.37	2.95	2.72	1.92	1.84	1.83
119-0117	TF 17 CAP	9.68	9.52	9.27	9.13	8.83	8.02	6.76
119-0124	TF 24 CAP	2.81	2.52	2.27	2.00	1.57	1.47	1.34
119-0125	TF 25 TUFF CAP	3.13	2.97	2.55	2.37	1.84	1.78	1.74
119-0126	TF 26 TUFF CAP	6.14	5.51	4.66	4.51	3.95	3.70	3.42
119-0127	TF-27 TUFF CAP	9.35	8.58	7.65	6.90	6.76	6.51	6.40
122-1034	TA 34 TUFF CAP	5.52	4.96	4.40	3.93	3.80	3.22	2.96
122-1035	TA 35 TUFF CAP	6.00	5.52	4.96	4.63	4.50	4.28	4.05
122-3034	TC-34 TUFF CAP	5.52	4.96	4.40	3.93	3.80	3.22	2.96
122-3035	TC-35 TUFF CAP	6.00	5.52	4.96	4.63	4.50	4.28	4.05
122-4034	TD-34 TUFF CAP	6.56	5.98	5.40	5.05	4.49	3.94	3.61
122-4035	TD-35 TUFF CAP	6.72	6.16	5.54	5.18	5.04	4.87	4.65
126-0024	TA 24-Z ZIRCONIUM CAP	2.79	2.56	2.18	2.04	1.60	1.47	1.37
126-0025	TA-25-CZ 'ZIRC' HARD CAP	3.30	3.05	2.65	2.48	1.91	1.83	1.76
126-0026	TB-25-CZ 'ZIRC' HARD CAP	3.30	3.05	2.65	2.48	1.93	1.86	1.70
126-0026-.20	TB-25Z-.20	3.30	3.05	2.65	2.48	1.93	1.86	1.70
126-0027	TC-25-Z ZIRCONIUM CAP	3.30	3.05	2.65	2.48	1.95	1.90	1.73
126-0028	TD-25-Z ZIRCONIUM CAP	5.49	5.09	4.27	4.12	2.12	2.06	2.02
126-0029	TE-25-CZ 'ZIRC' HARD CAP	3.30	3.05	2.65	2.48	1.93	1.86	1.78
126-0044	TC-24-Z 'ZIRC' CAP	2.79	2.56	2.18	2.04	1.60	1.47	1.37
126-0054	TD-24-Z 'ZIRCONIUM' CAP	3.32	3.03	2.60	2.42	1.75	1.60	1.47
126-0064	TE-24-Z ZIRCONIUM CAP	2.79	2.56	2.18	2.04	1.60	1.47	1.37
127-0024	TS-24-Z 'ZIRC' 85Rb CAP	2.54	2.34	2.05	1.89	1.79	1.58	1.49
127-0025	TS-25-Z 'ZIRCONIUM' CAP	3.21	3.08	2.61	2.44	2.28	1.94	1.88
511-TB-25Z-NF	511-TB-25Z-NF	4.14	3.85	3.33	3.12	2.30	2.22	1.99

Part Number	Part Description	1-24	25-49	50-99	100-249	250-499	500-999	1000-2999
-------------	------------------	------	-------	-------	---------	---------	---------	-----------

Part Number	Part Description	1-24	25-49	50-99	100-249	250-499	500-999	1000-2999
-------------	------------------	------	-------	-------	---------	---------	---------	-----------

## FEMALE CAPS

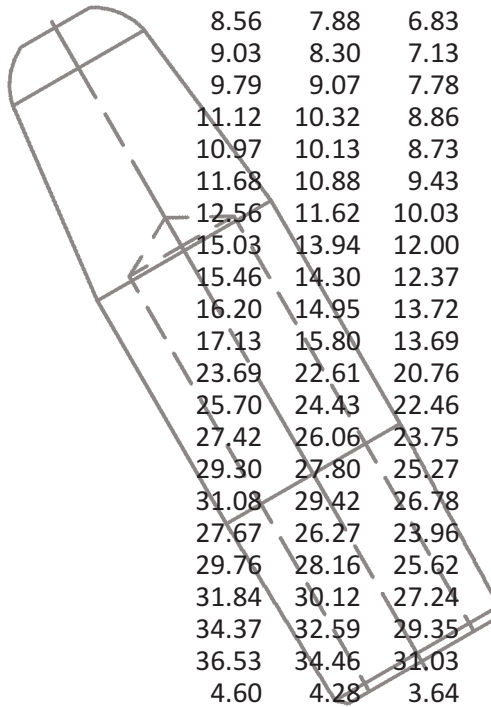
125-0241	TP 24A TUFF CAP	1.72	1.58	1.37	1.20	1.03	1.00	0.94
125-0242	TP-24-B TUFF CAP	1.72	1.58	1.37	1.20	1.03	1.00	0.94
125-0243	TP-24C TUFF CAP	1.72	1.58	1.37	1.20	1.03	1.00	0.94
125-0244	TP-24D TUFF CAP	2.10	1.93	1.63	1.52	1.17	1.12	1.03
125-0246	TP-24-F TUFF CAP	1.72	1.58	1.37	1.20	1.03	1.00	0.94
125-0251	TP 25-A TUFF CAP	3.05	2.80	2.45	2.11	1.37	1.21	1.07
125-0252	TP-25-B TUFF CAP	3.67	3.37	2.94	2.52	1.64	1.45	1.27
125-0252-.20	TP-25B CAP .19' FACE	3.30	3.02	2.64	2.28	1.47	1.30	1.18
125-0253	TP-25C TUFF CAP	3.46	3.18	2.47	2.41	1.58	1.40	1.26
125-0254	TP-25D TUFF CAP	3.41	3.14	2.76	2.40	1.59	1.42	1.29
125-0255	TP-25-E MALE CAP	3.34	3.06	2.39	2.32	1.53	1.36	1.22
125-0256	TP 25 F RADIUS CAP	3.34	3.06	2.39	2.32	1.53	1.36	1.22
125-0257	TP-25A-T	3.05	2.80	2.45	2.11	1.75	1.36	1.26
125-0261	TP 26-A TUFF CAP	3.29	3.00	2.80	2.65	1.83	1.68	1.56
125-0262	TP-26-B TUFF CAP	3.71	3.35	3.11	2.98	2.12	1.96	1.76
125-0262-.25	TP-26-B .25' FACE CAP	3.29	3.00	2.80	2.65	1.83	1.68	1.56
125-0263	TP-26C TUFF CAP	3.71	3.35	3.11	2.98	2.12	1.96	1.84
125-0264	TP-26D TUFF CAP	5.19	5.05	4.61	4.48	2.73	2.56	2.43
125-0266	TP-26-F TUFF CAP	3.71	3.35	3.11	2.98	2.12	1.96	1.76
125-0751	MW-6183 (5/8' FEMALE	3.20	2.23	1.75	1.46	1.26	1.23	1.20
126-0226	TA-26-CZ 'ZIRC' CAP	5.26	4.74	3.99	3.86	3.38	3.29	3.09
126-0241	TP-24-AZ ZIRCONIUM CAP	2.56	2.35	2.06	1.87	1.07	0.97	0.89
126-0251	TP 25-AZ 'ZIRCONIUM' CAP	3.10	2.84	2.48	2.14	1.40	1.25	1.10
126-0252	TP 25 BZ ZIRC CAP	3.72	3.43	3.00	2.59	1.69	1.49	1.36
126-0252-.20	TP-25BZ HARD CAP .19' FAC	3.33	3.05	2.67	2.31	1.51	1.35	1.21
126-0253	TP-25-CZ 'ZIRCONIUM' CAP	3.50	3.21	2.50	2.44	1.61	1.44	1.30
126-0254	TP 25-DZ ZIRC CAP	3.45	3.17	2.79	2.43	1.63	1.46	1.33
126-0261	TP-26-AZ 'ZIRC' CAP	3.29	3.00	2.80	2.67	1.85	1.69	1.58
126-0262	TP-26-BZ	3.29	3.00	2.80	2.67	1.85	1.69	1.58
126-0262-.25	TP-26-BZ 'ZIRC' .25' FACE	2.94	2.68	2.50	2.38	1.65	1.51	1.41
127-0241	TP-24-SZ 'ZIRC' CAP SUPER	2.20	2.06	1.99	1.77	1.70	1.40	1.24
127-0251	TP-25-SZ 'ZIRC' CAP SUPER	2.36	2.17	2.07	1.90	1.88	1.57	1.42
127-0261	TP-26-SZ '85Rb' SUPER CAP	4.07	3.67	3.45	3.28	2.92	2.37	2.20

Part Number	Part Description	1-24	25-49	50-99	100-249	250-499	500-999	1000-2999
-------------	------------------	------	-------	-------	---------	---------	---------	-----------

Part Number	Part Description	1-4	5-9	10-24	25-49	50-99	100-249	250-499
-------------	------------------	-----	-----	-------	-------	-------	---------	---------

## STRAIGHT ELECTRODES - POINTED

131-1404	A 1404 TIP	5.11	4.73	4.11	3.70	3.05	2.74	2.46
131-1405	A 1405 TIP	5.11	4.73	4.11	3.70	3.05	2.74	2.46
131-1406	A 1406 TIP	5.29	4.87	4.21	3.84	3.08	2.76	2.51
131-1407	A 1407 TIP	5.84	5.38	4.65	4.27	3.35	3.00	2.74
131-1408	A 1408 TIP	6.08	5.66	4.88	4.37	3.53	3.30	2.96
131-1409	A 1409 TIP	6.25	5.80	5.02	4.55	3.95	3.53	3.35
131-1410	A 1410 TIP	6.85	6.31	5.42	4.99	4.27	3.78	3.51
131-1411	A 1411 TIP	7.56	7.00	6.04	5.50	4.43	4.01	3.66
131-1412	A 1412 TIP	7.26	6.67	5.76	5.24	4.23	3.80	3.79
131-1413	A 1413 TIP	8.32	7.75	6.70	6.00	5.12	4.55	4.20
131-1414	A 1414 TIP	9.83	9.11	7.84	7.12	5.49	5.06	4.55
131-1415	A 1415 TIP	10.62	9.82	8.44	7.66	6.48	5.85	5.06
131-1416	A 1416 TIP	11.91	11.10	9.62	8.79	6.12	5.53	5.07
131-1505	A 1505 TIP	7.62	7.13	6.10	5.57	4.75	4.22	3.56
131-1506	A 1506 TIP	7.77	7.14	6.21	5.61	4.76	4.27	3.98
131-1507	A 1507 TIP	7.88	7.26	6.29	5.73	4.85	4.40	4.07
131-1508	A 1508 TIP	8.56	7.88	6.83	6.18	5.27	4.75	4.52
131-1509	A 1509 TIP	9.03	8.30	7.13	6.51	5.54	5.00	4.73
131-1510	A 1510 TIP	9.79	9.07	7.78	7.06	6.02	5.42	5.12
131-1511	A 1511 TIP	11.12	10.32	8.86	8.07	6.87	6.17	5.79
131-1512	A 1512 TIP	10.97	10.13	8.73	7.95	6.75	6.02	5.91
131-1513	A 1513 TIP	11.68	10.88	9.43	8.49	7.25	6.51	6.18
131-1514	A 1514 TIP	12.56	11.62	10.03	9.05	7.73	7.12	6.51
131-1515	A 1515 TIP	15.03	13.94	12.00	10.88	8.33	7.72	7.10
131-1516	A 1516 TIP	15.46	14.30	12.37	11.22	9.59	7.89	7.32
131-1517	A 1517 TIP	16.20	14.95	13.72	12.83	9.16	8.37	7.66
131-1518	A 1518 TIP	17.13	15.80	13.69	12.41	9.43	8.68	7.85
131-1608	A 1608 TIP	23.69	22.61	20.76	15.47	13.02	11.51	9.98
131-1610	A 1610 TIP	25.70	24.43	22.46	15.67	13.69	12.37	10.97
131-1612	A 1612 TIP	27.42	26.06	23.75	16.56	14.34	13.20	12.01
131-1614	A 1614 TIP	29.30	27.80	25.27	17.87	14.68	13.51	12.17
131-1616	A 1616 TIP	31.08	29.42	26.78	22.82	14.95	13.84	12.43
131-1708	A 1708 TIP	27.67	26.27	23.96	14.92	12.65	11.42	9.88
131-1710	A 1710 TIP	29.76	28.16	25.62	16.06	13.84	12.43	11.08
131-1712	A 1712 TIP	31.84	30.12	27.24	16.48	15.00	13.33	11.72
131-1714	A 1714 TIP	34.37	32.59	29.35	22.24	19.68	17.26	15.04
131-1716	A 1716 TIP	36.53	34.46	31.03	28.00	24.42	21.14	17.84
132-2404	A 2404 TIP	4.60	4.28	3.64	3.32	2.52	2.28	2.05
132-2405	A 2405 TIP	4.67	4.29	3.70	3.37	2.72	2.43	2.18
132-2406	A 2406 TIP	4.73	4.37	3.81	3.39	2.86	2.60	2.29
132-2407	A 2407 TIP	5.27	4.91	4.20	3.81	3.09	2.81	2.54
132-2408	A 2408 TIP	5.50	5.11	4.46	4.03	3.25	3.05	2.73
132-2409	A 2409 TIP	6.25	5.75	5.02	4.48	3.60	3.16	2.98
132-2410	A 2410 TIP	6.24	5.75	4.97	4.49	3.61	3.26	3.00
132-2411	A 2411 TIP	6.34	5.84	5.04	4.58	3.89	3.45	3.21
132-2412	A 2412 TIP	6.64	6.20	5.38	4.83	4.05	3.57	3.26
132-2413	A 2413 TIP	6.87	6.32	5.47	4.97	4.20	3.83	3.58
132-2414	A 2414 TIP	7.62	7.06	6.09	5.49	4.36	4.07	3.66
132-2415	A 2415 TIP	8.19	7.62	6.62	5.96	4.57	4.21	3.73
132-2416	A 2416 TIP	9.05	8.37	7.26	6.53	4.75	4.36	3.93

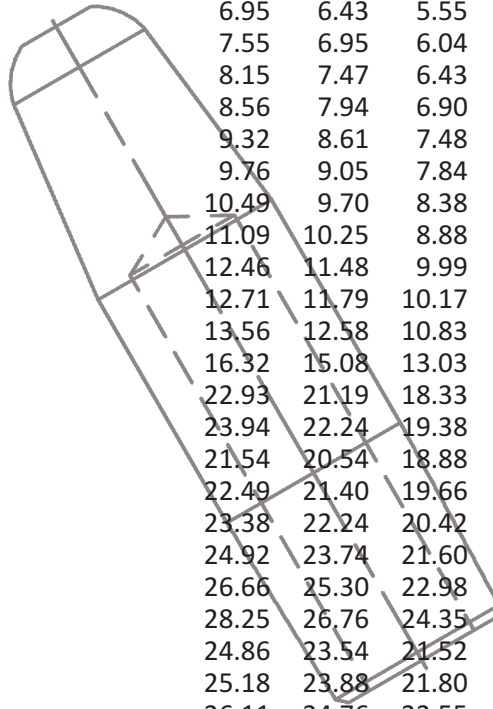


Part Number	Part Description	1-4	5-9	10-24	25-49	50-99	100-249	250-499
-------------	------------------	-----	-----	-------	-------	-------	---------	---------

Part Number	Part Description	1-4	5-9	10-24	25-49	50-99	100-249	250-499
-------------	------------------	-----	-----	-------	-------	-------	---------	---------

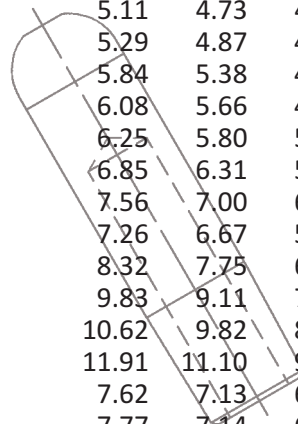
## STRAIGHT ELECTRODES - POINTED

132-2420	A 2420 TIP	16.70	15.52	13.45	12.29	10.52	9.37	8.23
132-2422	A 2422 TIP	17.83	16.43	14.27	12.88	11.00	9.82	8.78
132-2424	A 2424 TIP	19.02	17.53	15.11	13.76	11.74	10.47	9.34
132-2505	A 2505 TIP	6.88	6.40	5.53	5.02	3.13	3.01	2.92
132-2506	A 2506 TIP	6.78	6.29	5.46	4.95	3.35	3.19	3.12
132-2507	A 2507 TIP	6.95	6.43	5.55	5.03	3.60	3.47	3.40
132-2508	A 2508 TIP	7.55	6.95	6.04	5.46	3.90	3.79	3.69
132-2509	A 2509 TIP	8.15	7.47	6.43	5.87	4.21	4.07	3.95
132-2510	A 2510 TIP	8.56	7.94	6.90	6.21	4.41	4.27	4.18
132-2511	A 2511 TIP	9.32	8.61	7.48	6.74	4.74	4.61	4.51
132-2512	A 2512 TIP	9.76	9.05	7.84	7.05	4.92	4.80	4.71
132-2513	A 2513 TIP	10.49	9.70	8.38	7.61	5.04	4.92	4.83
132-2514	A 2514 TIP	11.09	10.25	8.88	8.03	5.31	5.17	5.10
132-2515	A 2515 TIP	12.46	11.48	9.99	9.00	5.94	5.79	5.71
132-2516	A 2516 TIP	12.71	11.79	10.17	9.24	5.99	5.88	5.81
132-2517	A 2517 TIP	13.56	12.58	10.83	9.83	8.01	7.27	6.68
132-2518	A 2518 TIP	16.32	15.08	13.03	11.86	8.28	7.60	6.90
132-2520	A 2520 TIP	22.93	21.19	18.33	16.66	14.20	12.71	11.33
132-2524	A 2524 TIP	23.94	22.24	19.38	17.69	15.16	13.74	12.37
132-2608	A 2608 TIP	21.54	20.54	18.88	14.06	11.86	10.49	9.06
132-2609	A 2609 TIP	22.49	21.40	19.66	14.20	12.29	10.81	9.73
132-2610	A 2610 TIP	23.38	22.24	20.42	14.24	12.46	11.24	10.01
132-2612	A 2612 TIP	24.92	23.74	21.60	15.06	13.04	12.01	10.93
132-2614	A 2614 TIP	26.66	25.30	22.98	16.26	13.33	12.29	11.09
132-2616	A 2616 TIP	28.25	26.76	24.35	20.76	13.61	12.58	11.32
132-2707	A 2707 TIP	24.86	23.54	21.52	13.40	11.32	10.09	8.83
132-2708	A 2708 TIP	25.18	23.88	21.80	13.56	11.50	10.38	9.00
132-2709	A 2709 TIP	26.11	24.76	22.55	14.33	12.29	11.08	9.94
132-2710	A 2710 TIP	27.06	25.62	23.30	14.62	12.58	11.32	10.07
132-2712	A 2712 TIP	28.97	27.41	26.11	15.00	13.62	12.14	10.66
132-2714	A 2714 TIP	31.26	29.64	26.70	20.23	17.92	15.68	13.67
132-2716	A 2716 TIP	33.22	31.34	28.21	25.48	22.20	19.22	16.22



## STRAIGHT ELECTRODES - DOMED

133-1404	B 1404 TIP	5.11	4.73	4.11	3.70	3.05	2.74	2.46
133-1405	B 1405 TIP	5.11	4.73	4.11	3.70	3.05	2.74	2.46
133-1406	B 1406 TIP	5.29	4.87	4.21	3.84	3.08	2.76	2.51
133-1407	B 1407 TIP	5.84	5.38	4.65	4.27	3.35	3.00	2.74
133-1408	B 1408 TIP	6.08	5.66	4.88	4.37	3.53	3.30	2.96
133-1409	B 1409 TIP	6.25	5.80	5.02	4.55	3.95	3.53	3.35
133-1410	B 1410 TIP	6.85	6.31	5.42	4.99	4.27	3.78	3.51
133-1411	B 1411 TIP	7.56	7.00	6.04	5.50	4.43	4.01	3.66
133-1412	B 1412 TIP	7.26	6.67	5.76	5.24	4.23	3.80	3.79
133-1413	B 1413 TIP	8.32	7.75	6.70	6.00	5.12	4.55	4.20
133-1414	B 1414 TIP	9.83	9.11	7.84	7.12	5.49	5.06	4.55
133-1415	B 1415 TIP	10.62	9.82	8.44	7.66	6.48	5.85	5.06
133-1416	B 1416 TIP	11.91	11.10	9.62	8.79	6.12	5.53	5.07
133-1505	B 1505 TIP	7.62	7.13	6.10	5.57	4.75	4.22	3.56
133-1506	B 1506 TIP	7.77	7.14	6.21	5.61	4.76	4.27	3.98
133-1507	B 1507 TIP	7.88	7.26	6.29	5.73	4.85	4.40	4.07



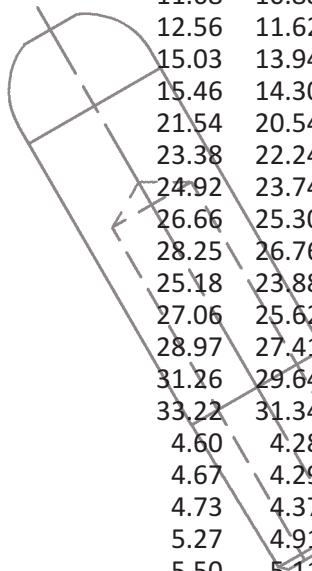
Part Number	Part Description	1-4	5-9	10-24	25-49	50-99	100-249	250-499
-------------	------------------	-----	-----	-------	-------	-------	---------	---------



Part Number	Part Description	1-4	5-9	10-24	25-49	50-99	100-249	250-499
-------------	------------------	-----	-----	-------	-------	-------	---------	---------

## STRAIGHT ELECTRODES - DOMED

133-1508	B 1508 TIP	8.56	7.88	6.83	6.18	5.27	4.75	4.52
133-1509	B 1509 TIP	9.03	8.30	7.13	6.51	5.54	5.00	4.73
133-1510	B 1510 TIP	9.79	9.07	7.78	7.06	6.02	5.42	5.12
133-1511	B 1511 TIP	11.12	10.32	8.86	8.07	6.87	6.17	5.79
133-1512	B 1512 TIP	10.97	10.13	8.73	7.95	6.75	6.02	5.91
133-1513	B 1513 TIP	11.68	10.88	9.43	8.49	7.25	6.51	6.18
133-1514	B 1514 TIP	12.56	11.62	10.03	9.05	7.73	7.12	6.51
133-1515	B 1515 TIP	15.03	13.94	12.00	10.88	8.33	7.72	7.10
133-1516	B 1516 TIP	15.46	14.30	12.37	11.22	9.59	7.89	7.32
133-1608	B-1608 TIP	21.54	20.54	18.88	14.06	11.86	10.49	9.06
133-1610	B-1610 TIP	23.38	22.24	20.42	14.24	12.46	11.24	10.01
133-1612	B-1612 TIP	24.92	23.74	21.60	15.06	13.04	12.01	10.93
133-1614	B-1614 TIP	26.66	25.30	22.98	16.26	13.33	12.29	11.09
133-1616	B-1616 TIP	28.25	26.76	24.35	20.76	13.61	12.58	11.32
133-1708	B-1708 TIP	25.18	23.88	21.80	13.56	11.50	10.38	9.00
133-1710	B-1710 TIP	27.06	25.62	23.30	14.62	12.58	11.32	10.07
133-1712	B-1712 TIP	28.97	27.41	24.78	15.00	13.62	12.14	10.66
133-1714	B-1714 TIP	31.26	29.64	26.70	20.23	17.92	15.68	13.67
133-1716	B 1716 TIP	33.22	31.34	28.21	25.48	22.20	19.22	16.22
134-2404	B 2404 TIP	4.60	4.28	3.64	3.32	2.52	2.28	2.05
134-2405	B 2405 TIP	4.67	4.29	3.70	3.37	2.72	2.43	2.18
134-2406	B-2406 TIP	4.73	4.37	3.81	3.39	2.86	2.60	2.29
134-2407	B 2407 TIP	5.27	4.91	4.20	3.81	3.09	2.81	2.54
134-2408	B 2408 TIP	5.50	5.11	4.46	4.03	3.25	3.05	2.73
134-2409	B 2409 TIP	6.25	5.75	5.02	4.48	3.60	3.16	2.98
134-2410	B 2410 TIP	6.24	5.75	4.97	4.49	3.61	3.26	3.00
134-2411	B 2411 TIP	6.34	5.84	5.04	4.58	3.89	3.45	3.21
134-2412	B 2412 TIP	6.64	6.20	5.38	4.83	4.05	3.57	3.26
134-2413	B 2413 TIP	6.87	6.32	5.47	4.97	4.20	3.83	3.58
134-2414	B 2414 TIP	7.62	7.06	6.09	5.49	4.36	4.07	3.66
134-2415	B 2415 TIP	8.19	7.62	6.62	5.96	4.57	4.21	3.73
134-2416	B 2416 TIP	9.05	8.37	7.26	6.53	4.75	4.36	3.93
134-2505	B 2505 TIP	6.99	6.47	5.58	5.10	3.13	3.01	2.92
134-2506	B 2506 TIP	6.78	6.29	5.46	4.95	3.35	3.19	3.12
134-2507	B 2507 TIP	6.95	6.43	5.55	5.03	3.60	3.47	3.40
134-2508	B 2508 TIP	7.55	6.95	6.04	5.46	3.90	3.79	3.69
134-2509	B 2509 TIP	8.15	7.47	6.43	5.87	4.21	4.07	3.95
134-2510	B 2510 TIP	8.56	7.94	6.90	6.21	4.41	4.27	4.18
134-2511	B 2511 TIP	9.32	8.61	7.48	6.74	4.74	4.61	4.51
134-2512	B 2512 TIP	9.76	9.05	7.84	7.05	4.92	4.80	4.71
134-2513	B 2513 TIP	10.49	9.70	8.38	7.61	5.04	4.92	4.83
134-2514	B 2514 TIP	11.09	10.25	8.88	8.03	5.31	5.17	5.10
134-2515	B 2515 TIP	12.46	11.48	9.99	9.00	5.94	5.79	5.71
134-2516	B 2516 TIP	12.71	11.79	10.17	9.24	5.99	5.88	5.81
134-2517	B-2517 TIP	13.56	12.58	10.83	9.83	8.01	7.27	6.68
134-2520	B-2520 TIP	22.37	20.69	17.89	16.24	13.83	12.39	11.03
134-2608	B-2608 TIP	21.54	20.54	18.88	14.06	11.86	10.49	9.06
134-2610	B-2610 TIP	23.38	22.24	20.42	14.24	12.46	11.24	10.01



Part Number	Part Description	1-4	5-9	10-24	25-49	50-99	100-249	250-499
-------------	------------------	-----	-----	-------	-------	-------	---------	---------

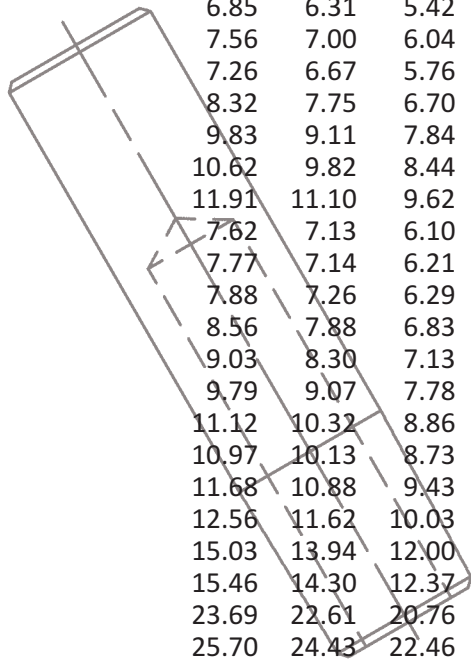
Part Number	Part Description	1-4	5-9	10-24	25-49	50-99	100-249	250-499
-------------	------------------	-----	-----	-------	-------	-------	---------	---------

## STRAIGHT ELECTRODES - DOMED

134-2612	B-2612 TIP	24.92	23.74	21.60	15.06	13.04	12.01	10.93
134-2614	B-2614 TIP	26.66	25.30	22.98	16.26	13.33	12.29	11.09
134-2616	B-2616 TIP	28.25	26.76	24.35	20.76	13.61	12.58	11.32
134-2708	B 2708 TIP	25.18	23.88	21.80	13.56	11.50	10.38	9.00
134-2710	B-2710 TIP	27.06	25.62	23.30	14.62	12.58	11.32	10.07
134-2712	B-2712 TIP	28.97	27.41	26.11	15.00	13.62	12.14	10.66
134-2714	B-2714 TIP	31.26	29.64	26.70	20.23	17.92	15.68	13.67
134-2716	B-2716 TIP	33.22	31.34	28.21	25.48	22.20	19.22	16.22

## STRAIGHT ELECTRODES - FLAT

135-1404	C-1404 TIP	5.11	4.73	4.11	3.70	3.05	2.74	2.46
135-1405	C-1405 TIP	5.11	4.73	4.11	3.70	3.05	2.74	2.46
135-1406	C-1406 TIP	5.29	4.87	4.21	3.84	3.08	2.76	2.51
135-1407	C-1407 TIP	5.84	5.38	4.65	4.27	3.35	3.00	2.74
135-1408	C-1408 TIP	6.08	5.66	4.88	4.37	3.53	3.30	2.96
135-1409	C-1409 TIP	6.25	5.80	5.02	4.55	3.95	3.53	3.35
135-1410	C-1410 TIP	6.85	6.31	5.42	4.99	4.27	3.78	3.51
135-1411	C-1411 TIP	7.56	7.00	6.04	5.50	4.43	4.01	3.66
135-1412	C-1412 TIP	7.26	6.67	5.76	5.24	4.23	3.80	3.79
135-1413	C-1413 TIP	8.32	7.75	6.70	6.00	5.12	4.55	4.20
135-1414	C-1414 TIP	9.83	9.11	7.84	7.12	5.49	5.06	4.55
135-1415	C-1415 TIP	10.62	9.82	8.44	7.66	6.48	5.85	5.06
135-1416	C-1416 TIP	11.91	11.10	9.62	8.79	6.12	5.53	5.07
135-1505	C-1505 TIP	7.62	7.13	6.10	5.57	4.75	4.22	3.56
135-1506	C-1506 TIP	7.77	7.14	6.21	5.61	4.76	4.27	3.98
135-1507	C-1507 TIP	7.88	7.26	6.29	5.73	4.85	4.40	4.07
135-1508	C-1508 TIP	8.56	7.88	6.83	6.18	5.27	4.75	4.52
135-1509	C-1509 TIP	9.03	8.30	7.13	6.51	5.54	5.00	4.73
135-1510	C-1510 TIP	9.79	9.07	7.78	7.06	6.02	5.42	5.12
135-1511	C-1511 TIP	11.12	10.32	8.86	8.07	6.87	6.17	5.79
135-1512	C-1512 TIP	10.97	10.13	8.73	7.95	6.75	6.02	5.91
135-1513	C-1513 TIP	11.68	10.88	9.43	8.49	7.25	6.51	6.18
135-1514	C-1514 TIP	12.56	11.62	10.03	9.05	7.73	7.12	6.51
135-1515	C-1515 TIP	15.03	13.94	12.00	10.88	8.33	7.72	7.10
135-1516	C-1516 TIP	15.46	14.30	12.37	11.22	9.59	7.89	7.32
135-1608	C-1608 TIP	23.69	22.61	20.76	15.47	13.02	11.51	9.98
135-1610	C-1610 TIP	25.70	24.43	22.46	15.67	13.69	12.37	10.97
135-1612	C-1612 TIP	27.42	26.06	23.75	16.56	14.34	13.20	12.01
135-1614	C-1614 TIP	29.30	27.80	25.27	17.87	14.68	13.51	12.17
135-1616	C-1616 TIP	31.08	29.42	26.78	22.82	14.95	13.84	12.43
135-1708	C-1708 TIP	27.67	26.27	23.96	14.92	12.65	11.42	9.88
135-1710	C-1710 TIP	29.76	28.16	25.62	16.06	13.84	12.43	11.08
135-1712	C-1712 TIP	31.84	30.12	27.24	16.48	15.00	13.33	11.72
135-1714	C-1714 TIP	34.37	32.59	29.35	22.24	19.68	17.26	15.04
135-1716	C-1716 TIP	36.53	34.46	31.03	28.00	24.42	21.14	17.84
136-2404	C-2404 TIP	4.60	4.28	3.64	3.32	2.52	2.28	2.05
136-2405	C-2405 TIP	4.67	4.29	3.70	3.37	2.72	2.43	2.18
136-2406	C-2406 TIP	4.73	4.37	3.81	3.39	2.86	2.60	2.29
136-2407	C-2407 TIP	5.27	4.91	4.20	3.81	3.09	2.81	2.54
136-2408	C-2408 TIP	5.50	5.11	4.46	4.03	3.25	3.05	2.73



Part Number	Part Description	1-4	5-9	10-24	25-49	50-99	100-249	250-499
-------------	------------------	-----	-----	-------	-------	-------	---------	---------

Part Number	Part Description	1-4	5-9	10-24	25-49	50-99	100-249	250-499
-------------	------------------	-----	-----	-------	-------	-------	---------	---------

### STRAIGHT ELECTRODES - FLAT

136-2409	C-2409 TIP	6.25	5.75	5.02	4.48	3.60	3.16	2.98
136-2410	C-2410 TIP	6.24	5.75	4.97	4.49	3.61	3.26	3.00
136-2411	C-2411 TIP	6.34	5.84	5.04	4.58	3.89	3.45	3.21
136-2412	C-2412 TIP	6.64	6.20	5.38	4.83	4.05	3.57	3.26
136-2413	C-2413 TIP	6.87	6.32	5.47	4.97	4.20	3.83	3.58
136-2414	C-2414 TIP	7.62	7.06	6.09	5.49	4.36	4.07	3.66
136-2415	C-2415 TIP	8.19	7.62	6.62	5.96	4.57	4.21	3.73
136-2416	C-2416 TIP	9.05	8.37	7.26	6.53	4.75	4.36	3.93
136-2505	C-2505 TIP	6.99	6.47	5.58	5.10	3.13	3.01	2.92
136-2506	C-2506 TIP	6.78	6.29	5.46	4.95	3.35	3.19	3.12
136-2507	C-2507 TIP	6.95	6.43	5.55	5.03	3.60	3.47	3.40
136-2508	C-2508 TIP	7.55	6.95	6.04	5.46	3.90	3.79	3.69
136-2509	C-2509 TIP	8.15	7.47	6.43	5.87	4.21	4.07	3.95
136-2510	C-2510 TIP	8.56	7.94	6.90	6.21	4.41	4.27	4.18
136-2511	C-2511 TIP	9.32	8.61	7.48	6.74	4.74	4.61	4.51
136-2512	C-2512 TIP	9.76	9.05	7.84	7.05	4.92	4.80	4.71
136-2513	C-2513 TIP	10.68	9.90	8.55	7.80	5.04	4.92	4.83
136-2514	C-2514 TIP	11.35	10.45	9.05	8.22	5.31	5.17	5.10
136-2515	C-2515 TIP	12.71	11.72	10.17	9.20	5.94	5.79	5.71
136-2516	C-2516 TIP	12.93	12.00	10.37	9.44	5.99	5.88	5.81
136-2520	C-2520 TIP	22.93	21.19	18.33	16.66	14.20	12.71	11.33
136-2608	C-2608 TIP	21.54	20.54	18.88	14.06	11.86	10.49	9.06
136-2610	C-2610 TIP	23.38	22.24	20.42	14.24	12.46	11.24	10.01
136-2612	C-2612 TIP	24.92	23.74	21.60	15.06	13.04	12.01	10.93
136-2614	C-2614 TIP	26.66	25.30	22.98	16.26	13.33	12.29	11.09
136-2616	C-2616 TIP	28.25	26.76	24.35	20.76	13.61	12.58	11.32
136-2708	C-2708 TIP	25.18	23.88	21.80	13.56	11.50	10.38	9.00
136-2710	C-2710 TIP	27.06	25.62	23.30	14.62	12.58	11.32	10.07
136-2712	C-2712 TIP	28.97	27.41	24.78	15.00	13.62	12.14	10.66
136-2714	C-2714 TIP	31.26	29.64	26.70	20.23	17.92	15.68	13.67
136-2716	C-2716 TIP	33.22	31.34	28.21	25.48	22.20	19.22	16.22

### STRAIGHT ELECTRODES - OFFSET

137-1404	D-1404 TIP	6.46	5.95	5.09	4.67	4.59	3.57	3.00
137-1405	D-1405 TIP	6.50	5.97	5.25	4.71	4.59	3.60	3.00
137-1406	D-1406 TIP	6.56	6.09	5.29	4.75	3.26	3.09	3.01
137-1407	D-1407 TIP	6.72	6.18	5.30	4.87	3.57	3.16	3.12
137-1408	D-1408 TIP	7.12	6.56	5.69	5.16	3.70	3.49	3.25
137-1409	D-1409 TIP	7.38	6.80	5.92	5.30	4.55	4.09	3.57
137-1410	D-1410 TIP	7.82	7.26	6.29	5.66	4.06	3.70	3.56
137-1411	D-1411 TIP	8.13	7.52	6.51	5.82	4.98	4.46	4.01
137-1412	D-1412 TIP	8.78	8.15	7.04	5.91	5.11	4.48	4.05
137-1413	D-1413 TIP	9.65	8.93	7.75	6.98	5.96	5.35	4.76
137-1414	D-1414 TIP	10.40	9.61	8.32	7.54	6.44	5.77	5.13
137-1415	D-1415 TIP	10.84	10.02	8.67	7.84	6.73	6.03	5.35
137-1416	D-1416 TIP	11.39	10.52	9.04	8.23	7.04	6.25	5.63
137-1505	D-1505 TIP	8.89	8.21	7.09	6.45	5.26	4.71	4.35
137-1506	D-1506 TIP	8.79	8.11	7.03	6.36	5.15	4.62	4.37
137-1507	D-1507 TIP	9.09	8.36	7.23	6.55	5.61	4.97	4.50

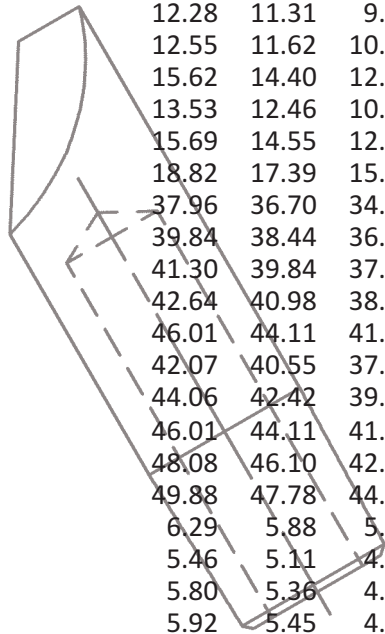
Part Number	Part Description	1-4	5-9	10-24	25-49	50-99	100-249	250-499
-------------	------------------	-----	-----	-------	-------	-------	---------	---------



Part Number	Part Description	1-4	5-9	10-24	25-49	50-99	100-249	250-499
-------------	------------------	-----	-----	-------	-------	-------	---------	---------

## STRAIGHT ELECTRODES - OFFSET

137-1508	D-1508 TIP	9.30	8.63	7.45	6.73	5.77	5.16	4.58
137-1509	D-1509 TIP	9.72	9.00	7.77	7.04	6.01	5.38	4.82
137-1510	D-1510 TIP	10.57	9.79	8.43	7.69	6.31	5.86	5.27
137-1511	D-1511 TIP	12.28	11.31	9.81	8.84	7.44	6.55	5.91
137-1512	D-1512 TIP	12.55	11.62	10.05	9.11	7.52	6.87	6.14
137-1513	D-1513 TIP	15.62	14.40	12.55	11.35	7.99	7.25	6.51
137-1514	D-1514 TIP	13.53	12.46	10.80	9.81	8.35	7.50	6.67
137-1515	D-1515 TIP	15.69	14.55	12.61	11.39	9.30	8.58	7.71
137-1516	D-1516 TIP	18.82	17.39	15.08	13.66	9.26	8.33	7.58
137-1608	D-1608 TIP	37.96	36.70	34.63	33.42	31.40	30.25	29.35
137-1610	D-1610 TIP	39.84	38.44	36.12	34.69	32.52	31.31	30.07
137-1612	D-1612 TIP	41.30	39.84	37.25	35.77	33.48	32.17	30.90
137-1614	D-1614 TIP	42.64	40.98	38.30	36.70	34.26	32.89	31.61
137-1616	D-1616 TIP	46.01	44.11	41.04	39.16	38.75	35.27	33.20
137-1708	D-1708 TIP	42.07	40.55	37.88	36.35	33.68	32.96	31.37
137-1710	D-1710 TIP	44.06	42.42	39.54	37.80	35.16	33.68	32.33
137-1712	D-1712 TIP	46.01	44.11	41.04	39.16	36.31	34.72	33.20
137-1714	D-1714 TIP	48.08	46.10	42.74	40.76	37.61	35.87	34.36
137-1716	D-1716 TIP	49.88	47.78	44.20	42.00	38.75	36.88	35.18
138-2404	D-2404 TIP	6.29	5.88	5.02	4.58	3.86	3.48	3.00
138-2405	D-2405 TIP	5.46	5.11	4.36	3.95	3.23	2.93	2.55
138-2406	D-2406 TIP	5.80	5.36	4.65	4.16	3.23	2.98	2.60
138-2407	D-2407 TIP	5.92	5.45	4.71	4.28	3.60	3.16	2.81
138-2408	D-2408 TIP	6.20	5.71	4.94	4.48	3.80	3.46	3.03
138-2409	D-2409 TIP	6.58	6.03	5.19	4.73	4.01	3.60	3.23
138-2410	D-2410 TIP	6.84	6.36	5.46	4.97	4.06	3.82	3.46
138-2411	D-2411 TIP	6.96	6.46	5.58	5.32	4.32	3.79	3.60
138-2412	D-2412 TIP	7.62	7.05	6.09	5.50	4.62	4.01	3.83
138-2413	D-2413 TIP	8.40	7.78	6.70	6.09	4.72	4.21	3.85
138-2414	D-2414 TIP	8.58	7.97	6.84	6.25	4.75	4.29	3.93
138-2415	D-2415 TIP	8.97	8.28	7.15	6.47	4.88	4.46	4.10
138-2416	D-2416 TIP	9.05	8.37	7.22	6.62	5.16	4.67	4.21
138-2505	D-2505 TIP	8.04	7.44	6.40	5.83	4.93	4.45	3.91
138-2506	D-2506 TIP	8.23	7.62	6.58	5.96	4.82	4.34	4.07
138-2507	D-2507 TIP	8.48	7.87	6.80	6.17	5.15	4.53	4.17
138-2508	D-2508 TIP	8.74	8.02	6.90	6.29	5.38	4.80	4.30
138-2509	D-2509 TIP	9.30	8.63	7.47	6.73	5.77	5.18	4.61
138-2510	D-2510 TIP	10.19	9.45	8.23	7.36	5.75	5.39	4.89
138-2511	D-2511 TIP	10.45	9.66	8.38	7.56	6.26	5.69	5.16
138-2512	D-2512 TIP	10.92	10.13	8.73	7.87	6.41	5.84	5.24
138-2513	D-2513 TIP	11.02	10.21	8.82	7.99	6.59	5.94	5.36
138-2514	D-2514 TIP	11.76	10.82	9.40	8.47	6.91	6.18	5.57
138-2515	D-2515 TIP	13.31	12.31	10.64	9.63	7.66	7.09	6.32
138-2516	D-2516 TIP	15.56	14.42	12.41	11.28	8.09	7.27	6.69
138-2608	D-2608 TIP	37.43	36.16	34.10	32.88	30.86	29.74	28.81
138-2610	D-2610 TIP	39.11	37.67	35.36	34.06	31.96	30.72	29.66
138-2612	D-2612 TIP	41.04	39.54	37.03	35.56	33.14	31.87	30.66
138-2614	D-2614 TIP	42.85	41.16	38.40	36.74	34.25	32.77	31.49



Part Number	Part Description	1-4	5-9	10-24	25-49	50-99	100-249	250-499
-------------	------------------	-----	-----	-------	-------	-------	---------	---------

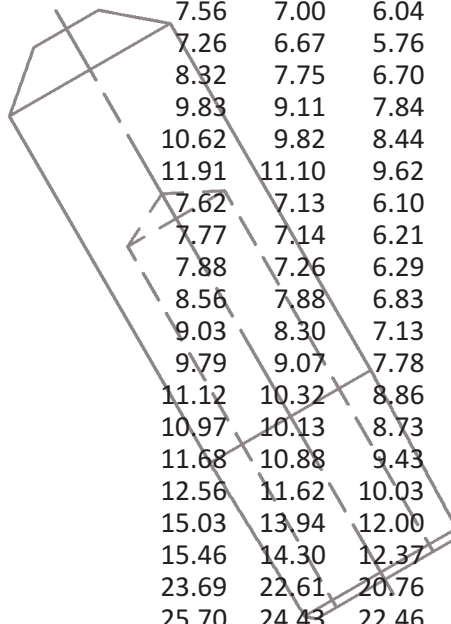
Part Number	Part Description	1-4	5-9	10-24	25-49	50-99	100-249	250-499
-------------	------------------	-----	-----	-------	-------	-------	---------	---------

### STRAIGHT ELECTRODES - OFFSET

138-2616	D-2616 TIP	45.12	43.21	40.24	38.40	35.64	34.07	32.63
138-2708	D-2708 TIP	46.37	44.87	42.22	40.63	38.16	36.82	35.63
138-2710	D-2710 TIP	48.79	47.02	44.11	42.38	39.68	38.15	36.78
138-2712	D-2712 TIP	50.89	48.98	45.85	43.94	41.02	39.30	37.82
138-2714	D-2714 TIP	53.20	51.18	47.69	45.62	42.42	40.60	39.00
138-2716	D-2716 TIP	55.57	53.33	49.62	47.30	43.90	41.93	40.13

### STRAIGHT ELECTRODES - TRUNCATED

140-1404	E 1404 TIP	5.41	5.38	4.65	4.27	3.61	3.26	2.46
140-1405	E 1405 TIP	5.11	4.73	4.11	3.70	3.05	2.74	2.46
140-1406	E 1406 TIP	5.29	4.87	4.21	3.84	3.08	2.76	2.51
140-1407	E 1407 TIP	5.84	5.38	4.65	4.27	3.35	3.00	2.74
140-1408	E 1408 TIP	6.08	5.66	4.88	4.37	3.53	3.30	2.96
140-1409	E 1409 TIP	6.25	5.80	5.02	4.55	3.95	3.53	3.35
140-1410	E 1410 TIP	6.85	6.31	5.42	4.99	4.27	3.78	3.51
140-1411	E 1411 TIP	7.56	7.00	6.04	5.50	4.43	4.01	3.66
140-1412	E 1412 TIP	7.26	6.67	5.76	5.24	4.23	3.80	3.79
140-1413	E 1413 TIP	8.32	7.75	6.70	6.00	5.12	4.55	4.20
140-1414	E 1414 TIP	9.83	9.11	7.84	7.12	5.49	5.06	4.55
140-1415	E 1415 TIP	10.62	9.82	8.44	7.66	6.48	5.85	5.06
140-1416	E 1416 TIP	11.91	11.10	9.62	8.79	6.12	5.53	5.07
140-1505	E 1505 TIP	7.62	7.13	6.10	5.57	4.75	4.22	3.56
140-1506	E 1506 TIP	7.77	7.14	6.21	5.61	4.76	4.27	3.98
140-1507	E 1507 TIP	7.88	7.26	6.29	5.73	4.85	4.40	4.07
140-1508	E 1508 TIP	8.56	7.88	6.83	6.18	5.27	4.75	4.52
140-1509	E 1509 TIP	9.03	8.30	7.13	6.51	5.54	5.00	4.73
140-1510	E 1510 TIP	9.79	9.07	7.78	7.06	6.02	5.42	5.12
140-1511	E 1511 TIP	11.12	10.32	8.86	8.07	6.87	6.17	5.79
140-1512	E 1512 TIP	10.97	10.13	8.73	7.95	6.75	6.02	5.91
140-1513	E 1513 TIP	11.68	10.88	9.43	8.49	7.25	6.51	6.18
140-1514	E 1514 TIP	12.56	11.62	10.03	9.05	7.73	7.12	6.51
140-1515	E 1515 TIP	15.03	13.94	12.00	10.88	8.33	7.72	7.10
140-1516	E 1516 TIP	15.46	14.30	12.37	11.22	9.59	7.89	7.32
140-1608	E 1608 TIP	23.69	22.61	20.76	15.47	13.02	11.51	9.98
140-1610	E 1610 TIP	25.70	24.43	22.46	15.67	13.69	12.37	10.97
140-1612	E-1612 TIP	27.42	26.06	23.75	16.56	14.34	13.20	12.01
140-1614	E 1614 TIP	29.30	27.80	25.27	17.87	14.68	13.51	12.17
140-1616	E 1616 TIP	31.08	29.42	26.78	22.82	14.95	13.84	12.43
140-1708	E 1708 TIP	27.67	26.27	23.96	14.92	12.65	11.42	9.88
140-1710	E 1710 TIP	29.76	28.16	25.62	16.06	13.84	12.43	11.08
140-1712	E 1712 TIP	31.84	30.12	27.24	16.48	15.00	13.33	11.72
140-1714	E 1714 TIP	34.37	32.59	29.35	22.24	19.68	17.26	15.04
140-1716	E 1716 TIP	36.53	34.46	31.03	28.00	24.42	21.14	17.84
140-2404	E-2404 TIP	4.60	4.28	3.64	3.32	2.65	2.40	2.16
140-2405	E 2405 TIP	4.67	4.29	3.70	3.37	2.72	2.43	2.18
140-2406	E 2406 TIP	4.73	4.37	3.81	3.39	2.86	2.60	2.29
140-2407	E 2407 TIP	5.27	4.91	4.20	3.81	3.09	2.81	2.54
140-2408	E-2408 TIP	5.50	5.11	4.46	4.03	3.25	3.05	2.73
140-2409	E 2409 TIP	6.25	5.75	5.02	4.48	3.60	3.16	2.98
140-2410	E 2410 TIP	6.24	5.75	4.97	4.49	3.61	3.26	3.00

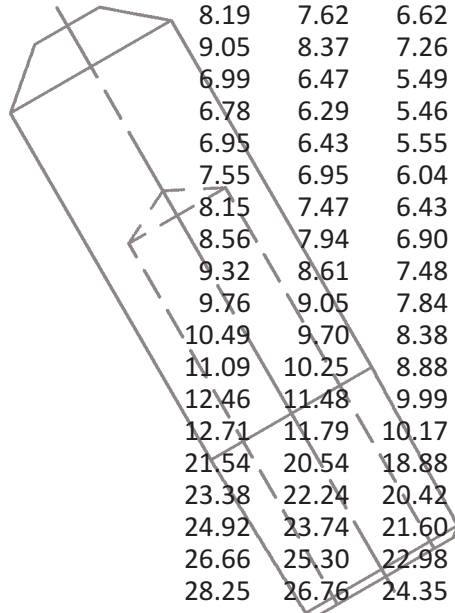


Part Number	Part Description	1-4	5-9	10-24	25-49	50-99	100-249	250-499
-------------	------------------	-----	-----	-------	-------	-------	---------	---------

Part Number	Part Description	1-4	5-9	10-24	25-49	50-99	100-249	250-499
-------------	------------------	-----	-----	-------	-------	-------	---------	---------

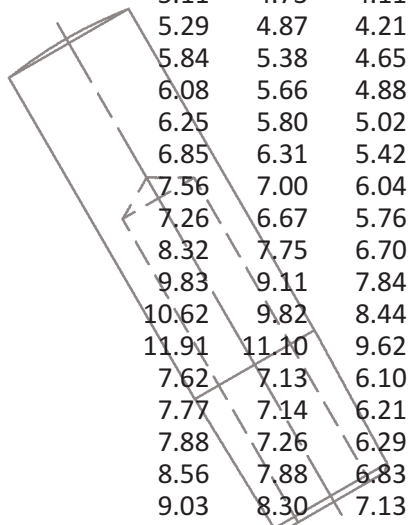
## STRAIGHT ELECTRODES - TRUNCATED

140-2411	E 2411 TIP	6.34	5.84	5.04	4.58	3.89	3.45	3.21
140-2412	E 2412 TIP	6.64	6.20	5.38	4.83	4.05	3.57	3.26
140-2413	E 2413 TIP	6.87	6.32	5.47	4.97	4.20	3.83	3.58
140-2414	E 2414 TIP	7.62	7.06	6.09	5.49	4.36	4.07	3.66
140-2415	E 2415 TIP	8.19	7.62	6.62	5.96	4.57	4.21	3.73
140-2416	E 2416 TIP	9.05	8.37	7.26	6.53	4.75	4.36	3.93
140-2505	E 2505 TIP	6.99	6.47	5.49	5.10	3.13	3.01	2.92
140-2506	E-2506 TIP	6.78	6.29	5.46	4.95	3.35	3.19	3.12
140-2507	E 2507 TIP	6.95	6.43	5.55	5.03	3.60	3.47	3.40
140-2508	E 2508 TIP	7.55	6.95	6.04	5.46	3.90	3.79	3.69
140-2509	E 2509 TIP	8.15	7.47	6.43	5.87	4.21	4.07	3.95
140-2510	E 2510 TIP	8.56	7.94	6.90	6.21	4.41	4.27	4.18
140-2511	E 2511 TIP	9.32	8.61	7.48	6.74	4.74	4.61	4.51
140-2512	E 2512 TIP	9.76	9.05	7.84	7.05	4.92	4.80	4.71
140-2513	E 2513 TIP	10.49	9.70	8.38	7.61	5.04	4.92	4.83
140-2514	E 2514 TIP	11.09	10.25	8.88	8.03	5.31	5.17	5.10
140-2515	E 2515 TIP	12.46	11.48	9.99	9.00	5.94	5.79	5.71
140-2516	E 2516 TIP	12.71	11.79	10.17	9.24	5.99	5.88	5.81
140-2608	E 2608 TIP	21.54	20.54	18.88	14.06	11.86	10.49	9.06
140-2610	E 2610 TIP	23.38	22.24	20.42	14.24	12.46	11.24	10.01
140-2612	E 2612 TIP	24.92	23.74	21.60	15.06	13.04	12.01	10.93
140-2614	E 2614 TIP	26.66	25.30	22.98	16.26	13.33	12.29	11.09
140-2616	E 2616 TIP	28.25	26.76	24.35	20.76	13.61	12.58	11.32
140-2708	E 2708 TIP	25.18	23.88	21.80	13.56	11.50	10.38	9.00
140-2710	E 2710 TIP	27.06	25.62	23.30	14.62	12.58	11.32	10.07
140-2712	E 2712 TIP	28.97	27.41	24.78	15.00	13.62	12.14	10.66
140-2714	E 2714 TIP	31.26	29.64	26.70	20.23	17.92	15.68	13.67
140-2716	E 2716 TIP	33.22	31.34	28.21	25.48	22.20	19.22	16.22



## STRAIGHT ELECTRODES - RADIUS

141-1404	F 1404 TIP	5.86	5.38	4.65	4.27	3.61	3.26	2.46
141-1405	F 1405 TIP	5.11	4.73	4.11	3.70	3.05	2.74	2.46
141-1406	F 1406 TIP	5.29	4.87	4.21	3.84	3.08	2.76	2.51
141-1407	F 1407 TIP	5.84	5.38	4.65	4.27	3.35	3.00	2.74
141-1408	F 1408 TIP	6.08	5.66	4.88	4.37	3.53	3.30	2.96
141-1409	F 1409 TIP	6.25	5.80	5.02	4.55	3.95	3.53	3.35
141-1410	F 1410 TIP	6.85	6.31	5.42	4.99	4.27	3.78	3.51
141-1411	F 1411 TIP	7.56	7.00	6.04	5.50	4.43	4.01	3.66
141-1412	F 1412 TIP	7.26	6.67	5.76	5.24	4.23	3.80	3.79
141-1413	F 1413 TIP	8.32	7.75	6.70	6.00	5.12	4.55	4.20
141-1414	F 1414 TIP	9.83	9.11	7.84	7.12	5.49	5.06	4.55
141-1415	F 1415 TIP	10.62	9.82	8.44	7.66	6.48	5.85	5.06
141-1416	F 1416 TIP	11.91	11.10	9.62	8.79	6.12	5.53	5.07
141-1505	F 1505 TIP	7.62	7.13	6.10	5.57	4.75	4.22	3.56
141-1506	F 1506 TIP	7.77	7.14	6.21	5.61	4.76	4.27	3.98
141-1507	F 1507 TIP	7.88	7.26	6.29	5.73	4.85	4.40	4.07
141-1508	F 1508 TIP	8.56	7.88	6.83	6.18	5.27	4.75	4.52
141-1509	F 1509 TIP	9.03	8.30	7.13	6.51	5.54	5.00	4.73
141-1510	F 1510 TIP	9.79	9.07	7.78	7.06	6.02	5.42	5.12
141-1511	F 1511 TIP	11.12	10.32	8.86	8.07	6.87	6.17	5.79

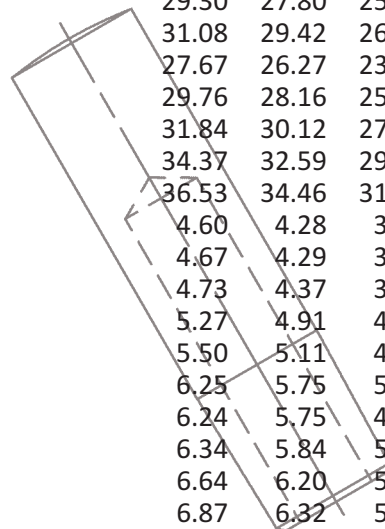


Part Number	Part Description	1-4	5-9	10-24	25-49	50-99	100-249	250-499
-------------	------------------	-----	-----	-------	-------	-------	---------	---------

Part Number	Part Description	1-4	5-9	10-24	25-49	50-99	100-249	250-499
-------------	------------------	-----	-----	-------	-------	-------	---------	---------

## STRAIGHT ELECTRODES - RADIUS

141-1512	F 1512 TIP	10.97	10.13	8.73	7.95	6.75	6.02	5.91
141-1513	F 1513 TIP	11.68	10.88	9.43	8.49	7.25	6.51	6.18
141-1514	F 1514 TIP	12.56	11.62	10.03	9.05	7.73	7.12	6.51
141-1515	F 1515 TIP	15.03	13.94	12.00	10.88	8.33	7.72	7.10
141-1516	F 1516 TIP	15.46	14.30	12.37	11.22	9.59	7.89	7.32
141-1608	F 1608 TIP	23.69	22.61	20.76	15.47	13.02	11.51	9.98
141-1610	F 1610 TIP	25.70	24.43	22.46	15.67	13.69	12.37	10.97
141-1612	F 1612 TIP	27.42	26.06	23.75	16.56	14.34	13.20	12.01
141-1614	F 1614 TIP	29.30	27.80	25.27	17.87	14.68	13.51	12.17
141-1616	F 1616 TIP	31.08	29.42	26.78	22.82	14.95	13.84	12.43
141-1708	F 1708 TIP	27.67	26.27	23.96	14.92	12.65	11.42	9.88
141-1710	F 1710 TIP	29.76	28.16	25.62	16.06	13.84	12.43	11.08
141-1712	F 1712 TIP	31.84	30.12	27.24	16.48	15.00	13.33	11.72
141-1714	F 1714 TIP	34.37	32.59	29.35	22.24	19.68	17.26	15.04
141-1716	F 1716 TIP	36.53	34.46	31.03	28.00	24.42	21.14	17.84
141-2404	F-2404 TIP	4.60	4.28	3.64	3.32	2.65	2.40	2.16
141-2405	F 2405 TIP	4.67	4.29	3.70	3.37	2.85	2.55	2.29
141-2406	F 2406 TIP	4.73	4.37	3.81	3.39	2.86	2.60	2.29
141-2407	F 2407 TIP	5.27	4.91	4.20	3.81	3.09	2.81	2.54
141-2408	F 2408 TIP	5.50	5.11	4.46	4.03	3.25	3.05	2.73
141-2409	F 2409 TIP	6.25	5.75	5.02	4.48	3.60	3.16	2.98
141-2410	F 2410 TIP	6.24	5.75	4.97	4.49	3.61	3.26	3.00
141-2411	F 2411 TIP	6.34	5.84	5.04	4.58	3.89	3.45	3.21
141-2412	F 2412 TIP	6.64	6.20	5.38	4.83	4.05	3.57	3.26
141-2413	F 2413 TIP	6.87	6.32	5.47	4.97	4.20	3.83	3.58
141-2414	F 2414 TIP	7.62	7.06	6.09	5.49	4.36	4.07	3.66
141-2415	F 2415 TIP	8.19	7.62	6.62	5.96	4.57	4.21	3.73
141-2416	F 2416 TIP	9.05	8.37	7.26	6.53	4.75	4.36	3.93
141-2505	F 2505 TIP	6.99	6.47	5.58	5.10	3.13	3.01	2.92
141-2506	F 2506 TIP	6.78	6.29	5.46	4.95	3.35	3.19	3.12
141-2507	F 2507 TIP	6.95	6.43	5.55	5.03	3.60	3.47	3.40
141-2508	F-2508 TIP	7.55	6.95	6.04	5.46	3.90	3.79	3.69
141-2509	F-2509 TIP	8.38	7.68	6.60	6.02	4.34	4.17	4.07
141-2510	F-2510 TIP	8.56	7.94	6.90	6.21	4.41	4.27	4.18
141-2511	F-2511 TIP	9.32	8.61	7.48	6.74	4.74	4.61	4.51
141-2512	F-2512 TIP	9.76	9.05	7.84	7.05	4.92	4.80	4.71
141-2513	F-2513 TIP	10.49	9.70	8.38	7.61	5.04	4.92	4.83
141-2514	F-2514 TIP	11.09	10.25	8.88	8.03	5.31	5.17	5.10
141-2515	F-2515 RADIUS TIP	12.46	11.48	9.99	9.00	5.94	5.79	5.71
141-2516	F-2516 TIP	12.71	11.79	10.17	9.24	5.99	5.88	5.81
141-2608	F-2608 TIP	21.54	20.54	18.88	14.06	11.86	10.49	9.06
141-2610	F-2610 TIP	23.38	22.24	20.42	14.24	12.46	11.24	10.01
141-2612	F-2612 TIP	24.92	23.74	21.60	15.06	13.04	12.01	10.93
141-2614	F-2614 TIP	26.66	25.30	22.98	16.26	13.33	12.29	11.09
141-2616	F-2616 TIP	28.25	26.76	24.35	20.76	13.61	12.58	11.32
141-2708	F-2708 TIP	25.18	23.88	21.80	13.56	11.50	10.38	9.00
141-2710	F-2710 TIP	27.06	25.62	23.30	14.62	12.58	11.32	10.07
141-2712	F-2712 TIP	28.97	27.41	24.78	15.00	13.62	12.14	10.66
141-2714	F-2714 TIP	31.26	29.64	26.70	20.23	17.92	15.68	13.67
141-2716	F-2716 TIP	33.22	31.34	28.21	25.48	22.20	19.22	16.22

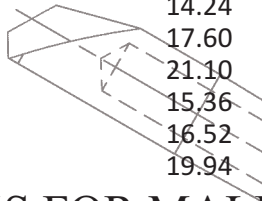


Part Number	Part Description	1-4	5-9	10-24	25-49	50-99	100-249	250-499
-------------	------------------	-----	-----	-------	-------	-------	---------	---------

Part Number	Part Description	1-4	5-9	10-24	25-49	50-99	100-249	250-499
-------------	------------------	-----	-----	-------	-------	-------	---------	---------

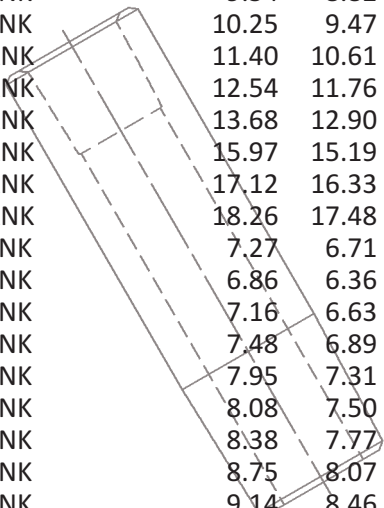
## STRAIGHT ELECTRODES - 30 DEGREE FACE

145-2408	H-2408-30 TIP	14.24	13.19	11.39	10.34	9.42	8.44	7.52
145-2412	H-2412-30 TIP	17.60	16.33	14.08	12.78	11.68	10.48	9.31
145-2416	H-2416-30 TIP	21.10	19.49	16.85	15.28	13.97	12.50	11.12
145-2508	H-2508-30 TIP	15.36	14.20	12.30	11.12	10.56	9.43	8.46
145-2512	H-2512-30 TIP	16.52	15.25	13.19	11.94	11.32	10.15	9.05
145-2516	H-2516-30 TIP	19.94	18.41	15.91	14.46	13.66	12.26	10.90



## SHANKS FOR MALE CAPS ( TG STYLE)

161-2404	TG 2404 SHANK	6.10	5.63	4.88	4.43	3.74	3.40	3.04
161-2405	TG 2405 SHANK	6.19	5.72	4.97	4.52	3.75	3.40	3.05
161-2406	TG 2406 SHANK	6.59	6.11	5.26	4.78	3.96	3.57	3.16
161-2407	TG 2407 SHANK	6.77	6.19	5.34	4.88	4.16	3.69	3.31
161-2408	TG 2408 SHANK	7.24	6.69	5.77	5.25	4.39	3.94	3.52
161-2409	TG 2409 SHANK	7.48	6.92	5.99	5.41	4.56	4.04	3.64
161-2410	TG 2410 SHANK	7.79	7.24	6.28	5.67	4.72	4.27	3.78
161-2411	TG 2411 SHANK	8.06	7.47	6.42	5.86	4.95	4.34	3.92
161-2412	TG 2412 SHANK	8.26	7.62	6.63	5.99	5.12	4.57	4.07
161-2413	TG 2413 SHANK	8.83	8.16	7.10	6.42	5.20	4.74	4.23
161-2414	TG 2414 SHANK	9.54	8.82	7.61	6.88	5.41	4.85	4.32
161-2415	TG 2415 SHANK	10.25	9.47	8.19	7.43	5.71	5.19	4.61
161-2416	TG-2416 SHANK	11.40	10.61	9.34	8.58	7.35	6.69	6.06
161-2417	TG-2417 SHANK	12.54	11.76	10.48	9.72	8.52	7.85	7.24
161-2418	TG-2418 SHANK	13.68	12.90	11.63	10.87	9.69	9.02	8.41
161-2420	TG-2420 SHANK	15.97	15.19	13.92	13.15	12.02	11.35	10.74
161-2422	TG-2422 SHANK	17.12	16.33	15.06	14.30	13.19	12.53	11.90
161-2424	TG-2424 SHANK	18.26	17.48	16.21	15.44	14.35	12.53	11.90
161-2504	TG 2504 SHANK	7.27	6.71	5.78	5.22	4.43	3.98	3.55
161-2505	TG 2505 SHANK	6.86	6.36	5.52	4.98	4.04	3.78	3.57
161-2506	TG 2506 SHANK	7.16	6.63	5.75	5.22	4.24	4.00	3.78
161-2507	TG 2507 SHANK	7.48	6.89	5.98	5.37	4.36	4.11	3.95
161-2508	TG 2508 SHANK	7.95	7.31	6.35	5.71	4.62	4.35	4.12
161-2509	TG 2509 SHANK	8.08	7.50	6.47	5.89	4.75	4.52	4.28
161-2510	TG 2510 SHANK	8.38	7.77	6.73	6.10	4.91	4.67	4.39
161-2511	TG 2511 SHANK	8.75	8.07	7.02	6.35	5.15	4.81	4.56
161-2512	TG 2512 SHANK	9.14	8.46	7.31	6.63	5.34	5.07	4.80
161-2513	TG 2513 SHANK	9.53	8.77	7.61	6.89	5.62	5.28	5.02
161-2514	TG 2514 SHANK	10.05	9.26	8.00	7.28	5.87	5.52	5.27
161-2515	TG 2515 SHANK	11.56	10.70	9.21	8.34	6.78	6.11	5.42
161-2516	TG 2516 SHANK	12.06	11.16	9.62	8.76	7.12	6.35	5.68
161-2517	TG-2517 SHANK	12.57	11.61	10.06	9.14	7.38	6.59	5.89
161-2518	TG-2518 SHANK	22.09	15.47	12.39	11.40	11.00	9.85	8.79
161-2520	TG-2520 Shank	25.52	18.90	15.83	13.68	12.02	10.77	9.61
161-2522	TG-2522 SHANK	28.62	22.33	19.26	17.12	15.62	11.94	11.33
161-2524	TG-2524 SHANK	30.91	24.62	21.55	19.41	16.83	12.58	11.97
161-2606	TG 2606 SHANK	25.75	23.83	20.57	14.05	8.69	7.73	6.72
161-2608	TG 2608 SHANK	28.45	26.29	22.75	15.43	9.38	8.23	7.26
161-2609	TG 2609 SHANK	29.60	27.42	23.66	16.07	9.53	8.56	7.51
161-2610	TG 2610 SHANK	31.21	28.85	24.91	16.92	10.07	8.91	7.79
161-2611	TG 2611 SHANK	33.17	30.66	26.54	18.08	10.30	9.30	8.23
161-2612	TG 2612 SHANK	32.34	29.92	25.92	17.55	10.49	9.29	8.06



Part Number	Part Description	1-4	5-9	10-24	25-49	50-99	100-249	250-499
-------------	------------------	-----	-----	-------	-------	-------	---------	---------



Part Number	Part Description	1-4	5-9	10-24	25-49	50-99	100-249	250-499
-------------	------------------	-----	-----	-------	-------	-------	---------	---------

### SHANKS FOR MALE CAPS ( TG STYLE)

161-2613	TG 2613 SHANK	33.25	30.80	26.58	18.09	10.67	9.52	8.36
161-2614	TG 2614 SHANK	35.13	32.49	28.08	19.10	11.91	10.30	8.69
161-2616	TG-2616 SHANK	36.97	34.21	29.58	20.10	12.13	10.67	9.20
161-2706	TG 2706 SHANK	32.68	30.22	26.14	17.73	13.11	11.78	10.49
161-2708	TG 2708 SHANK	36.18	33.42	28.96	19.68	14.54	13.03	11.62
161-2710	TG 2710 SHANK	38.80	35.88	31.06	21.10	15.61	13.98	12.48
161-2712	TG 2712 SHANK	44.59	41.25	35.68	24.22	17.93	16.03	14.29
162-2410	TG 2410 08 BENT SHANK	16.16	14.91	12.95	11.66	9.95	8.90	7.96
162-2420	TG 2410 12 BENT SHANK	15.90	14.71	12.76	11.53	9.83	8.81	7.85
162-2430	TG 2410 16 BENT SHANK	16.75	15.48	13.41	12.15	10.35	9.24	8.25
162-2430-NT	TG-2410-16-NT NO TUBE	20.94	19.34	16.78	15.18	12.94	11.55	10.33
162-2450	TG 2412 8 BENT SHANK	17.11	15.84	13.74	12.44	10.59	9.50	7.64
162-2450-NT	TG 2412 8 NO TUBE	21.39	19.80	17.18	15.55	13.26	12.08	9.76
162-2460	TG 2412 20 BENT SHANK	17.51	16.23	14.01	12.74	10.84	9.73	8.71
162-2460-NT	TG 2412 20 NO TUBE B/SHK	17.51	16.23	14.01	12.74	10.84	9.73	8.71
162-2470	TG 2413 16 BENT SHANK	17.51	16.23	14.01	12.74	10.84	9.73	8.71
162-2470-NT	TG-2413-16-NT NO TUBE	17.51	16.23	14.01	12.74	10.84	9.73	8.71
162-2480	TG 2413-20 SHANK	18.54	17.16	14.84	13.46	11.49	10.26	9.18
162-2505	TG 2509-4 BENT SHANK	18.60	17.21	14.89	13.46	11.45	10.29	9.21
162-2510	TG 2510 8 BENT SHANK	17.70	16.38	14.14	12.81	10.88	9.78	8.75
162-2510-NT	TG 2510 8 NO TUBE B/SHK	17.70	16.38	14.14	12.81	10.88	9.78	8.75
162-2520	TG 2510 12 BENT SHANK	16.95	15.84	13.56	12.28	9.86	9.60	9.38
162-2520-NT	TG-2510-12-NT NO TUBE	21.19	19.80	16.96	15.35	12.34	12.01	11.73
162-2530	TG 2510 16 BENT SHANK	19.93	18.64	15.99	14.46	12.31	11.05	9.89
162-2550	TG 2512 8 BENT SHANK	20.74	19.23	16.60	14.99	12.76	11.45	10.28
162-2560	TG 2512 20 BENT SHANK	22.36	20.68	17.93	16.23	13.83	12.39	11.05
162-2560-NT	TG-2512-20-NT NO TUBE	27.95	25.85	22.40	20.28	17.30	15.49	13.81
162-2570	TG 2513 16 BENT SHANK	22.36	20.68	17.93	16.23	13.83	12.39	11.05
162-2580	TG-2513-20 SHANK	19.30	17.83	15.48	13.98	11.05	10.55	10.13

### SHANKS FOR FEMALE CAPS ( TP STYLE)

163-2404	TP-2404 SHK (MW-645-51)	6.63	6.14	5.27	4.81	4.04	3.63	3.25
163-2406	TP-2406 SHK (MW-645-53)	7.22	6.68	5.76	5.25	4.45	4.00	3.55
163-2407	TP-2407 SHK (MW-645-54)	7.31	6.78	5.89	5.32	4.56	4.04	3.67
163-2408	TP-2408 SHK (MW-645-55)	7.70	7.12	6.14	5.59	4.48	4.27	4.00
163-2409	TP-2409 SHK (MW-645-56)	7.61	7.07	6.14	5.52	4.43	4.40	4.39
163-2410	TP-2410 SHK (MW-645-57)	7.95	7.31	6.31	5.73	4.60	4.53	4.52
163-2411	TP-2411 SHK (MW-645-58)	8.56	7.95	6.83	6.21	4.99	4.73	4.43
163-2412	TP-2412 SHK (MW-645-59)	8.49	7.92	6.83	6.20	5.07	4.91	4.84
163-2413	TP 2413 SHANK	9.09	8.43	7.25	6.59	5.42	5.20	5.19
163-2414	TP-2414 SHK (MW-645-61)	9.87	9.14	7.91	7.17	5.86	5.68	5.52
163-2415	TP-2415 SHANK	10.08	9.26	8.08	7.38	6.11	5.87	5.72
163-2416	TP-2416 SHK (MW-645-62)	10.08	9.26	8.08	7.38	6.11	5.87	5.72
163-2417	TP-2417 SHANK	13.18	10.90	9.55	8.63	6.56	6.47	6.15
163-2418	TP-2418 SHK (MW-645-63)	13.18	10.90	9.55	8.63	6.56	6.47	6.15
163-2420	TP-2420 SHANK	16.61	14.33	12.99	12.06	10.17	10.07	9.75
163-2422	TP-2422 SHANK	18.90	16.62	15.27	14.35	12.57	12.48	12.16
163-2424	TP-2424 SHANK	21.19	18.91	17.56	16.64	14.98	14.88	14.56
163-2506	TP 2506 SHANK	6.32	5.85	5.04	4.59	3.91	3.53	3.11
163-2507	TP 2507 SHANK	6.64	6.14	5.29	4.80	4.09	3.64	3.28

Part Number	Part Description	1-4	5-9	10-24	25-49	50-99	100-249	250-499
-------------	------------------	-----	-----	-------	-------	-------	---------	---------

Part Number	Part Description	1-4	5-9	10-24	25-49	50-99	100-249	250-499
-------------	------------------	-----	-----	-------	-------	-------	---------	---------

## SHANKS FOR FEMALE CAPS ( TP STYLE)

163-2508	TP 2508 SHANK	6.89	6.39	5.50	5.00	4.27	3.83	3.40
163-2508-BH	TP-2508-BH	6.89	6.39	5.50	5.00	4.27	3.83	3.40
163-2509	TP 2509 SHANK	7.30	6.74	5.82	5.27	4.49	4.02	3.59
163-2510	TP 2510 SHANK	8.48	7.81	6.74	6.17	5.22	4.67	4.38
163-2511	TP 2511 SHANK	8.83	8.18	7.03	6.39	5.43	4.88	4.56
163-2512	TP 2512 SHANK	9.31	8.54	7.42	6.71	5.71	5.15	4.81
163-2513	TP 2513 SHANK	9.96	9.18	7.98	7.20	6.15	5.46	5.11
163-2514	TP 2514 SHANK	10.50	9.75	8.44	7.63	6.49	5.86	5.43
163-2515	TP-2515 SHANK	11.65	10.90	9.58	8.78	7.70	7.06	6.63
163-2516	TP 2516 SHANK	12.79	12.04	10.73	9.92	8.89	8.27	7.83
163-2517	TP-2517 SHANK	13.94	13.19	11.87	11.07	10.10	9.47	9.03
163-2518	TP-2518 SHANK	15.08	14.33	13.02	12.21	11.30	10.67	10.24
163-2520	TP-2520 SHANK	17.37	16.62	15.31	14.50	13.71	13.07	12.64
163-2522	TP-2522 SHANK	19.66	18.91	17.60	16.79	16.11	15.48	15.04
163-2524	TP-2524 SHANK	21.95	21.20	19.89	19.08	18.51	17.88	17.45
163-2606	TP 2606 SHANK	20.52	18.95	16.34	13.00	6.95	6.66	6.31
163-2607	TP-2607 SHK (MW-1121-53)	20.13	18.61	16.07	12.76	6.84	6.51	6.21
163-2608	TP 2608 SHK (MW-1121-54)	23.00	21.23	18.35	14.58	7.79	7.42	7.09
163-2609	TP-2609 SHK (MW-1121-55)	23.87	22.10	19.07	15.15	8.30	7.80	7.60
163-2610	TP-2610 SHANK(MW-1121-	24.76	22.96	19.82	15.71	8.80	8.20	8.12
163-2611	TP-2611 SHK (MW-1121-57)	25.71	23.80	20.58	16.28	9.13	8.52	8.43
163-2612	TP-2612 SHANK(MW-1121-	26.63	24.66	21.36	16.90	9.49	8.85	8.71
163-2613	TP-2613 SHK (MW-1121-59)	26.76	24.77	21.39	17.12	9.77	9.50	9.04
163-2614	TP-2614 SHK (MW-1121-60)	26.86	25.00	21.58	17.30	10.41	9.62	9.25
163-2615	TP-2615 SHK (MW-1121-61)	27.10	25.23	22.04	11.04	10.60	9.76	9.42
163-2616	TP-2616 SHK (MW-1121-62)	27.33	25.46	22.28	17.63	10.86	10.01	9.69
163-2617	TP-2617 SHK (MW-1121-63)	27.78	25.85	22.54	12.48	12.15	11.10	10.68
164-2442	TP 2411 08 BENT SHANK	17.46	16.13	13.96	12.64	10.80	9.66	8.65
164-2445	TP 2411 12 BENT SHANK	18.15	16.75	14.55	13.13	11.20	10.00	8.91
164-2447	TP 2411 16 BENT SHANK	18.91	17.46	15.10	13.71	11.68	10.41	9.35
164-2447-NT	TP 2411 16 B/SHK NO TUBE	18.91	17.46	15.10	13.71	11.68	10.41	9.35
164-2465	TP 2413-08 BENT SHANK	18.15	16.75	14.55	13.13	11.20	10.00	8.91
164-2480	TP 2413 20 BENT SHANK	18.95	17.60	15.16	13.78	11.75	10.56	9.38
164-2480-NT	TP 2413 20 B/SHK NO TUBE	18.95	17.60	15.16	13.78	11.75	10.56	9.38
164-2490	TP 2414 16 BENT SHANK	20.10	18.60	16.05	14.59	12.44	11.10	9.95
164-2542	TP 2511 08 BENT SHANK	24.96	23.09	19.94	18.06	15.36	13.86	12.34
164-2542-NT	TP-2511-08 NO TUBE	31.20	28.86	24.93	22.58	19.20	17.31	15.43
164-2545	TP 2511 12 BENT SHANK	18.75	17.29	14.96	12.10	11.50	10.94	10.01
164-2547	TP 2511 16 BENT SHANK	19.45	17.98	15.58	12.63	11.86	11.35	10.88
164-2565	TP 2513 08 BENT SHANK	24.96	23.09	19.94	18.06	15.36	13.86	12.34
164-2570	TP 2513 16 BENT SHANK	27.63	25.49	22.03	20.03	17.03	15.30	13.60
164-2580	TP 2513 20 BENT SHANK	27.63	25.49	22.03	20.03	17.03	15.30	13.60

Part Number	Part Description	1-4	5-9	10-24	25-49	50-99	100-249	250-499
-------------	------------------	-----	-----	-------	-------	-------	---------	---------

Part Number	Part Description	1-4	5-9	10-24	25-49	50-99	100-249	250-499
-------------	------------------	-----	-----	-------	-------	-------	---------	---------

## DOUBLE BEND ELECTRODES, POINTED SHOWN

165-0100	FA 1424-8 BENT TIP	14.19	13.13	11.34	10.21	7.58	6.81	6.09
165-0100-T	FA-1424-8 BENT TIP/TUBE	14.19	13.13	11.34	10.21	7.58	6.81	6.09
165-0160	FA 1426-6 BENT TIP	14.19	13.13	11.34	10.21	7.58	6.81	6.09
165-0200	FA 1426-20 BENT TIP	16.11	14.89	12.89	11.69	8.66	7.84	6.93
165-0200-T	FA-1426-20 BENT TIP/TUBE	16.11	14.89	12.89	11.69	8.66	7.84	6.93
165-0280	FA 1428 16 BENT TIP	15.49	14.31	12.44	11.21	8.35	7.46	6.68
165-0320	FA 14210 12 BENT TIP	15.49	14.31	12.44	11.21	8.35	7.46	6.68
165-0360	FA 14212 8 BENT TIP	15.83	14.55	12.59	11.49	8.49	7.58	6.75
165-0460	FA 14214 20 BENT TIP	16.11	14.89	12.89	11.69	8.66	7.84	6.93
165-0520	FA 1430 16 BENT TIP	16.11	14.89	12.89	11.69	8.66	7.84	6.93
165-1160	FA 1526 6 BENT TIP	17.98	16.61	14.41	13.05	9.70	8.66	7.81
165-1240	FA 1528 8 BENT TIP	19.40	17.96	15.50	14.05	10.45	9.33	8.35
165-1240-T	FA-1528-8 BENT TIP/TUBE	19.40	17.96	15.50	14.05	10.45	9.33	8.35
165-1360	FA 15212 8 BENT TIP	20.63	19.11	16.54	14.89	11.06	9.98	8.81
165-1400	FA 15212 16 BENT TIP	21.45	19.91	17.14	15.59	11.54	10.36	9.21
165-1400-T	FA-15212-16 BENT	21.45	19.91	17.14	15.59	11.54	10.36	9.21
165-1460	FA 15214 20 BENT TIP	23.99	22.18	19.21	17.39	12.84	11.54	10.35
165-1460-T	FA-15214-20 BENT	23.99	22.18	19.21	17.39	12.84	11.54	10.35
165-1480	FA 1530 8 BENT TIP	21.45	19.91	17.14	15.59	11.54	10.36	9.21
165-1560	FA 1534 16 BENT TIP	23.99	22.18	19.21	17.39	12.84	11.54	10.35
165-1580	FA 1536 20 BENT TIP	25.58	23.66	20.43	18.56	13.76	12.34	11.00
165-1600	FA 1538 8 BENT TIP	23.86	22.13	19.15	17.31	12.80	11.49	10.24
165-1600-T	FA-1538-8 BENT TIP/TUBE	23.86	22.13	19.15	17.31	12.80	11.49	10.24
165-2200	FD 1426 20 BENT TIP	18.46	17.11	14.75	13.35	9.99	8.85	7.89
165-2200-T	FD-1426-20 BENT TIP/TUBE	18.46	17.11	14.75	13.35	9.99	8.85	7.89
165-2280	FD 1428 16 BENT TIP	17.45	16.11	14.00	12.63	9.38	8.45	7.51
165-3140	FD 1524 20 BENT TIP	33.88	31.29	27.06	24.46	18.16	16.25	14.51
165-3180	FD 1526 12 BENT TIP	22.13	20.46	17.74	16.06	11.91	10.66	9.49
165-3180-T	FD-1526-12 BENT TIP/TUBE	22.13	20.46	17.74	16.06	11.91	10.66	9.49
165-3360	FD 15212 8 BENT TIP	23.14	21.45	18.55	16.80	12.46	11.16	10.01
165-3400	FD 15212 16 BENT TIP	23.14	21.45	18.55	16.80	12.46	11.16	10.01
165-3570	FD-1536-6 BENT TIP	24.59	22.96	19.86	17.88	13.26	11.88	10.66
165-3580	FD 1536 20 BENT TIP	26.05	24.33	21.16	18.93	14.03	12.63	11.28
167-0060	FA 2317 8 BENT TIP	29.01	26.73	23.18	20.90	15.54	13.93	12.36
167-0100	FA 2424 8 BENT TIP	14.19	13.13	11.34	10.21	7.58	6.81	6.09
167-0100-T	FA-2424-8 BENT TIP/TUBE	14.19	13.13	11.34	10.21	7.58	6.81	6.09
167-0120	FA 2424 12 BENT TIP	14.65	13.53	11.69	10.64	7.86	7.04	6.24
167-0120-T	FA-2424-12 BENT TIP/TUBE	14.65	13.53	11.69	10.64	7.86	7.04	6.24
167-0160	FA 2426 6 BENT TIP	14.19	13.13	11.34	10.21	7.58	6.81	6.09
167-0180	FA 2426 12 BENT TIP	14.65	13.53	11.69	10.64	7.86	7.04	6.24
167-0180-T	FA-2426-12 BENT TIP/TUBE	14.65	13.53	11.69	10.64	7.86	7.04	6.24
167-0200	FA 2426 20 BENT TIP	16.11	14.89	12.89	11.69	8.66	7.84	6.93
167-0200-T	FA-2426-20 BENT TIP/TUBE	16.11	14.89	12.89	11.69	8.66	7.84	6.93
167-0240	FA 2428-8 BENT TIP	14.19	13.13	11.34	10.21	7.58	6.81	6.09
167-0240-T	FA-2428-8 BENT TIP/TUBE	14.19	13.13	11.34	10.21	7.58	6.81	6.09
167-0280	FA 2428 16 BENT TIP	15.49	14.31	12.44	11.21	8.35	7.46	6.68
167-0280-T	FA-2428-16 BENT TIP/TUBE	15.49	14.31	12.44	11.21	8.35	7.46	6.68
167-0320	FA 24210 12 BENT TIP	15.49	14.31	12.44	11.21	8.35	7.46	6.68
167-0320-T	FA-24210-12 BENT	15.49	14.31	12.44	11.21	8.35	7.46	6.68

Part Number	Part Description	1-4	5-9	10-24	25-49	50-99	100-249	250-499
-------------	------------------	-----	-----	-------	-------	-------	---------	---------

Part Number	Part Description	1-4	5-9	10-24	25-49	50-99	100-249	250-499
-------------	------------------	-----	-----	-------	-------	-------	---------	---------

## DOUBLE BEND ELECTRODES, POINTED SHOWN

167-0360	FA 24212 8 BENT TIP	15.83	14.55	12.59	11.49	8.49	7.58	6.75
167-0360-T	FA-24212-8 BENT TIP/TUBE	15.83	14.55	12.59	11.49	8.49	7.58	6.75
167-0400	FA 24212 16 BENT TIP	16.33	15.04	13.01	11.85	8.76	7.86	6.99
167-0400-T	FA-24212-16 BENT	20.43	18.78	16.28	14.80	10.95	9.83	8.73
167-0420	FA 24212 20 BENT TIP	16.79	15.49	13.45	12.19	9.04	8.14	7.23
167-0420-T	FA-24212-20 BENT	16.79	15.49	13.45	12.19	9.04	8.14	7.23
167-0430	FA 24214-12 BENT TIP	16.11	14.89	12.89	11.69	8.66	7.84	6.93
167-0460	FA 24214 20 BENT TIP	16.79	15.49	13.45	12.19	9.04	8.14	7.23
167-0460-T	FA-24214-20 BENT	16.79	15.49	13.45	12.19	9.04	8.14	7.23
167-0520	FA 2430 16 BENT TIP	16.79	15.49	13.45	12.19	9.04	8.14	7.23
167-0520-T	FA-2430-16 BENT TIP/TUBE	16.79	15.49	13.45	12.19	9.04	8.14	7.23
167-0580	FA 2436 20 BENT TIP	18.58	17.21	14.89	13.51	10.01	8.95	8.01
167-0580-T	FA-2436-20 BENT TIP/TUBE	18.58	17.21	14.89	13.51	10.01	8.95	8.01
167-0620	FA 2438 16 BENT TIP	18.58	17.21	14.89	13.51	10.01	8.95	8.01
167-0620-T	FA-2438-16 BENT TIP/TUBE	18.58	17.21	14.89	13.51	10.01	8.95	8.01
167-1160	FA 2526 6 BENT TIP	18.38	16.99	14.74	13.35	9.90	8.86	7.99
167-1180	FA 2526 12 BENT TIP	19.83	18.36	15.86	14.35	10.68	9.54	8.53
167-1240	FA 2528 8 BENT TIP	19.83	18.36	15.86	14.35	10.68	9.54	8.53
167-1240-T	FA-2528-8 BENT TIP/TUBE	19.83	18.36	15.86	14.35	10.68	9.54	8.53
167-1280	FA 2528 16 BENT TIP	19.83	18.36	15.86	14.35	10.68	9.54	8.53
167-1280-T	FA-2528-16 BENT TIP/TUBE	19.83	18.36	15.86	14.35	10.68	9.54	8.53
167-1360	FA 25212 8 BENT TIP	21.08	19.55	16.89	15.21	11.31	10.19	9.01
167-1380	FA 25212 12 BENT TIP	21.08	19.55	16.89	15.29	10.68	10.19	9.01
167-1400	FA 25212 16 BENT TIP	21.94	20.34	17.53	15.91	11.80	10.61	9.43
167-1400-T	FA-25212-16 BENT	21.94	20.34	17.53	15.91	11.80	10.61	9.43
167-1440	FA 25214 16 BENT TIP	21.94	20.34	17.53	15.91	11.80	10.61	9.43
167-1440-T	FA-25214-16 BENT	21.94	20.34	17.53	15.91	11.80	10.61	9.43
167-1460	FA 25214 20 BENT TIP	22.61	20.89	18.11	16.39	12.11	10.90	9.75
167-1480	FA 2530 8 BENT TIP	21.94	20.34	17.53	15.91	11.80	10.61	9.43
167-1500	FA 2530 12 BENT TIP	22.61	20.89	18.11	16.39	12.11	10.90	9.43
167-1500-T	FA-2530-12 BENT TIP/TUBE	22.61	20.89	18.11	16.39	12.11	10.90	9.43
167-1540	FA-2530-28 BENT TIP	26.18	24.24	20.96	18.99	14.03	12.61	11.24
167-1540-T	FA-2530-28 BENT TIP/TUBE	26.18	24.24	20.96	18.99	14.03	12.61	11.24
167-1560	FA 2534 16 BENT TIP	22.83	21.08	18.28	16.54	12.20	10.98	9.83
167-1560-T	FA-2534-16 BENT TIP/TUBE	22.83	21.08	18.28	16.54	12.20	10.98	9.83
167-1580	FA 2536 20 BENT TIP	26.15	24.19	20.89	18.98	14.08	12.60	11.24
167-1580-T	FA-2536-20 BENT TIP/TUBE	26.15	24.19	20.89	18.98	14.08	12.60	11.24
167-1600	FA 2538-8 BENT TIP	22.83	21.08	18.28	16.54	12.20	10.98	9.83
167-1620	FA 2538 16 BENT TIP	23.51	21.76	18.80	17.09	12.65	11.31	10.36
167-1620-T	FA-2538-16 BENT TIP/TUBE	26.15	24.19	20.89	18.98	14.08	12.60	11.24
167-2080	FD 2423 16 BENT TIP	16.08	14.80	12.80	11.65	8.65	7.68	6.84
167-2200	FD 2426 20 BENT TIP	18.46	17.11	14.75	13.35	9.99	8.85	7.89
167-2200-T	FD-2426-20 BENT TIP/TUBE	18.46	17.11	14.75	13.35	9.99	8.85	7.89
167-2280	FD 2428 16 BENT TIP	17.45	16.11	14.00	12.63	9.38	8.45	7.51
167-2280-T	FD-2428-16 BENT TIP/TUBE	17.45	16.11	14.00	12.63	9.38	8.45	7.51
167-2320	FD 24210 12 BENT TIP	17.45	16.11	14.00	12.63	9.38	8.45	7.51
167-2320-T	FD-24210-12 BENT	17.45	16.11	14.00	12.63	9.38	8.45	7.51
167-2360	FD 24212 8 BENT TIP	17.45	16.11	14.00	12.63	9.38	8.45	7.51
167-3100	FD 2524-8 BENT TIP	21.05	17.55	16.83	15.31	11.35	10.19	9.09

Part Number	Part Description	1-4	5-9	10-24	25-49	50-99	100-249	250-499
-------------	------------------	-----	-----	-------	-------	-------	---------	---------



Part Number	Part Description	1-4	5-9	10-24	25-49	50-99	100-249	250-499
-------------	------------------	-----	-----	-------	-------	-------	---------	---------

## DOUBLE BEND ELECTRODES, POINTED SHOWN

167-3140	FD 2524 20 BENT TIP	23.14	21.41	18.50	16.78	12.43	11.08	9.94
167-3140-T	FD-2524-20 BENT TIP/TUBE	23.14	21.41	18.50	16.78	12.43	11.08	9.94
167-3160	FD 2526 6 BENT TIP	21.29	19.73	17.09	15.46	11.49	10.28	9.18
167-3180	FD 2526 12 BENT TIP	21.29	19.73	17.09	15.46	11.49	10.28	9.18
167-3360	FD 25212 8 BENT TIP	21.29	19.73	17.09	15.46	11.49	10.28	9.18
167-3400	FD 25212 16 BENT TIP	21.44	19.89	17.21	15.60	11.63	10.40	9.33
167-3400-T	FD-25212-16 BENT TIP/TUBE	21.44	19.89	17.21	15.60	11.63	10.40	9.33
167-3480	FD 2530-8 BENT TIP	22.95	21.23	18.31	16.55	12.34	10.98	9.85
167-3520	FD 2530 16 BENT TIP	22.95	21.23	18.31	16.55	12.34	10.98	9.85
167-3580	FD 2536 20 BENT TIP	26.64	24.88	21.63	19.34	14.34	12.91	11.53
167-3580-T	FD-2536-20 BENT TIP/TUBE	26.64	24.88	21.63	19.34	14.34	12.91	11.53
167-3620	FD 2538 16 BENT TIP	26.64	24.88	21.63	17.41	12.93	11.61	10.61

## SINGLE BEND ELECTRODES

167-4260	FP 2428 9.5 BENT TIP	14.63	13.57	11.70	10.54	9.04	8.12	7.21
167-5055	FP-2423-7 BENT TIP	13.37	12.36	10.86	9.65	8.28	7.38	6.62
167-5060	FP 2523 7 BENT TIP	16.08	14.88	12.90	11.68	9.97	8.95	8.00
167-5065	FP-2430-8 BENT TIP	12.53	11.59	10.04	8.12	6.79	6.12	5.65
167-5070	FP-2530-8 BENT TIP	17.28	15.98	13.84	12.54	9.65	8.65	7.78
167-5220	FP 2527 15 BENT TIP	32.14	29.66	25.70	23.28	19.87	17.76	15.88
167-5540	FP 2532 10 BENT TIP	17.40	16.08	14.47	12.67	10.81	9.70	8.72
167-7340	FS 25212 7 BENT TIP	49.91	46.12	39.96	36.18	30.90	27.67	24.65

## PADDLE TIP ELECTRODES

170-3099	SE 3099 CL 2 SOCKET TIP	4.35	4.05	3.48	3.15	2.54	2.28	2.05
170-3099-1	SE-3099-1 CL1 SOCKET TIP	4.35	4.05	3.48	3.15	2.67	2.39	2.16
170-3099-Z	SE-3099 'Z' SOCKET TIP	4.35	4.05	3.48	3.15	2.54	2.28	2.05
170-3101	SE 3101 CL 2 SOCKET TIP	4.35	4.05	3.48	3.15	2.54	2.28	2.05
170-3101-1	SE-3101-1 CL 1 SOCKET TIP	4.35	4.05	3.48	3.15	2.67	2.39	2.16
170-3101-Z	SE-3101 'Z' SOCKET TIP	4.35	4.05	3.48	3.15	2.54	2.28	2.05
170-3102	SE 3102 CL 2 SOCKET TIP	6.13	5.61	4.88	4.41	2.87	2.62	2.29
170-3102-1	SE-3102-1 CL 1 SOCKET TIP	7.33	6.02	5.52	5.37	5.21	5.04	4.92
170-3102-Z	SE-3102 CR.ZR. OFFSET CAP	7.33	6.02	5.52	5.37	5.21	5.04	4.92
170-3110	SE 3110 CL 2 SOCKET TIP	4.35	4.05	3.48	3.15	2.67	2.39	2.16
170-3110-1	SE-3110-1 CL 1 SOCKET TIP	4.35	4.05	3.48	3.15	2.67	2.39	2.16
170-3110-Z	SE-3110 'Z' SOCKET TIP	4.35	4.05	3.48	3.15	2.67	2.39	2.16
170-3111	SE 3111 CL3 SOCKET TIP	6.91	6.36	5.49	5.04	4.05	3.65	3.23
170-3113	SE 3113 CL 3 SOCKET TIP	6.91	6.36	5.49	5.04	4.05	3.65	3.23
170-3123	SE 3123 CL 3 SOCKET TIP	10.60	9.78	8.47	7.69	6.25	5.57	4.98
170-3133	SE 3133 CL 3 SOCKET TIP	6.91	6.36	5.49	5.04	4.05	3.65	3.23
170-3247	SE 3247 PADDLE TIP	5.05	4.70	4.02	3.65	3.12	2.77	2.51
170-3248	SE 3248 PADDLE TIP	8.79	8.21	7.06	6.40	5.74	4.92	4.38
170-3249	SE 3249 PADDLE TIP	5.05	4.70	4.02	3.65	3.12	2.77	2.51

Part Number	Part Description	1-4	5-9	10-24	25-49	50-99	100-249	250-499
-------------	------------------	-----	-----	-------	-------	-------	---------	---------



Part Number	Part Description	1-4	5-9	10-24	25-49	50-99	100-249	250-499
-------------	------------------	-----	-----	-------	-------	-------	---------	---------

## MISCELLANEOUS ELECTRODES

170-4089	SE 4089 5RW BENT TIP	34.33	31.75	27.44	24.85	21.22	18.98	16.97
170-4090	SE 4089 4RW BENT TIP	34.33	31.75	27.44	24.85	21.22	18.98	16.97
170-4268	SE 4268 BENT TIP	32.20	29.77	25.73	23.33	19.93	17.83	15.92
170-4269	SE 4269 BENT TIP	33.14	30.65	26.50	24.04	20.51	18.35	16.38
170-4270	SE 4270 BENT TIP	9.90	9.13	7.93	7.15	6.10	5.46	4.87
170-4271	SE 4271 BENT TIP	17.10	15.82	13.67	12.34	10.52	9.43	8.44
170-4272	SE 4272 BENT TIP	15.86	14.65	12.64	11.50	9.77	8.77	7.81
170-4273	SE 4273 BENT TIP	16.62	15.37	13.25	12.01	10.25	9.17	8.17
170-4274	SE 4274 BENT TIP	17.40	16.09	13.94	12.64	10.81	9.65	8.63
170-4275	SE 4275 BENT TIP	48.14	44.53	38.51	34.90	29.77	26.66	23.82
170-4276	SE 4276 BENT TIP	15.67	14.53	12.56	11.35	9.71	8.69	7.79
170-4276-1	SE-4276-1 BENT TIP	15.67	14.53	12.56	11.35	9.71	8.69	7.79
170-4277	SE 4277 BENT TIP	17.93	16.57	14.30	13.00	10.34	9.26	8.26
170-4278	SE 4278 BENT TIP	19.48	17.95	15.52	14.08	12.01	10.81	9.60
170-4279	SE 4279 BENT TIP	22.30	20.64	17.84	16.16	13.81	12.38	11.04
170-4280	SE 4280 BENT TIP	13.49	12.48	10.80	9.79	8.36	7.46	6.71
170-4281	SE 4281 BENT TIP	20.08	18.54	16.05	14.54	12.05	10.80	9.60
170-4282	SE-4282 BENT TIP	23.48	21.76	18.79	17.03	14.53	13.03	11.64
170-4283	SE-4283 BENT TIP	22.25	20.02	17.47	15.89	13.70	12.64	11.50
170-4284	SE-4284 BENT TIP	22.25	20.02	17.47	15.89	13.70	12.64	11.50
170-4285	SE-4285 BENT TIP	20.71	19.18	16.54	15.01	12.80	11.50	10.25
170-4286	SE-4286 BENT TIP	24.25	22.43	19.34	17.56	15.00	13.44	12.00
170-4287	SE-4287 BENT TIP	24.70	22.88	19.81	18.00	15.48	13.92	12.47
170-4288	SE-4288 BENT TIP	38.84	35.92	31.07	28.15	23.99	22.52	20.11

## GUN ARM SHANK ADAPTERS

170-4408	SE 4408-1 SHANK TIP	24.61	22.73	19.68	17.82	15.20	13.62	12.17
170-4409	SE 4409 1 SHANK TIP	24.61	22.73	19.68	17.82	15.20	13.62	12.17
170-4410	SE-4410-1 SHANK TIP	24.61	22.73	19.68	17.82	15.20	13.62	12.17
170-4411	SE-4411-1 SHANK TIP	24.61	22.73	19.68	17.82	15.20	13.62	12.17
170-4418	SE 4408-2 SHANK TIP	25.50	23.62	20.41	18.47	15.78	14.11	12.60
170-4419	SE-4409-2 SHANK TIP	25.50	23.62	20.41	18.47	15.78	14.11	12.60
170-4420	SE-4410-2 SHANK TIP	25.50	23.62	20.41	18.47	15.78	14.11	12.60
170-4421	SE-4411-2 SHANK TIP	25.50	23.62	20.41	18.47	15.78	14.11	12.60
170-4422	SE 4412 SHANK	43.84	40.55	35.09	31.75	27.08	24.32	21.64
170-4423	SE 4413 SHANK	43.84	40.55	35.09	31.75	27.08	24.32	21.64
170-4424	SE 4414 SHANK	43.84	40.55	35.09	31.75	27.08	24.32	21.64
170-4425	SE 4415 SHANK	43.84	40.55	35.09	31.75	27.08	24.32	21.64

Part Number	Part Description	1-4	5-9	10-24	25-49	50-99	100-249	250-499
-------------	------------------	-----	-----	-------	-------	-------	---------	---------

Part Number      Part Description

1-4      5-9      10-24      25-49      50-99

## STUD AND NUT ELECTRODES

175-0316-4006-10W	0316-4006-10W	101.00	89.04	80.85	69.07	64.02
175-0316-40062-10W	0316-40062-10W	92.97	81.02	75.80	64.01	58.97
175-0316-4010-10W	0316-4010-10W	101.00	89.04	80.85	69.07	64.02
175-0316-40102-10W	0316-40102-10W	92.97	81.02	75.80	64.01	58.97
175-0316-4031-10W	0316-4031-10W	101.00	89.04	80.87	69.07	64.02
175-0316-4032-10W	0316-4032-10W	92.97	81.02	75.80	64.01	58.97
175-0316-4041-10W	0316-4041-10W	101.00	89.04	80.85	69.07	64.02
175-0316-4042-10W	0316-4042-10W	92.97	81.02	75.80	64.01	58.97
175-0316-4051-10W	0316-4051-10W	101.00	89.04	80.85	69.07	64.02
175-0316-4052-10W	0316-4052-10W	92.97	81.02	75.80	64.01	58.97
175-0316-4061-10W	0316-4061-10W	101.00	89.04	80.85	69.07	64.02
175-0316-4062-10W	0316-4062-10W	92.97	81.02	75.80	64.01	58.97
175-1061-5	ARTIC 106 W/5RW SHANK	98.80	86.50	81.11	74.65	67.99
175-1071-5	ARTIC 107 W/5RW SHANK	98.80	86.50	81.11	74.65	67.99
175-1092-5	ARTIC 9mm STUD /5RW SHK.	186.42	163.13	152.84	140.66	115.28
175-1102-5	ARTIC 110 W/5RW SHANK	186.42	163.13	152.84	140.66	115.28
175-1123-5	ARTIC 112 W/5RW SHANK	186.42	163.13	152.84	140.66	115.28
175-1151-5	ARTIC 115 W/5RW SHANK	98.80	86.50	81.11	74.65	67.99
175-1161-5	ARTIC 116 W/5RW SHANK	98.80	86.50	81.11	74.65	67.99
175-1191-5	ARTIC 119 W/5RW SHANK	98.80	86.50	81.11	74.65	67.99
175-1221-4	ARTIC 122 W/4RW SHANK	98.80	86.50	81.11	74.65	67.99
175-1221-5	ARTIC 122 W/5RW SHANK	98.80	86.50	81.11	74.65	67.99
175-1252-4	ARTIC 125 W/4RW SHANK	98.80	86.50	81.11	74.65	67.99
175-1252-5	ARTIC 125 W/5RW SHANK	98.80	86.50	81.11	74.65	67.99
175-1312-4	ARTIC 131 W/4RW SHANK	98.80	86.50	81.11	74.65	67.99
175-1312-5	ARTIC 131 W/5RW SHANK	98.80	86.50	81.11	74.65	67.99
175-1313-4012-10W	1313-4012-10W	138.04	120.32	105.34	94.34	87.62
175-1313-40122-10W	1313-40122-10W	130.03	113.91	99.40	87.59	82.54
175-1313-4371-10W	1313-4371-10W	138.04	120.32	105.34	94.34	87.62
175-1313-4372-10W	1313-4372-10W	130.03	113.91	99.40	87.59	82.54
175-1313-4381-10W	1313-4381-10W	138.04	120.32	105.34	94.34	87.62
175-1313-4382-10W	1313-4382-10W	130.03	113.91	99.40	87.59	82.54
175-1313-4391-10W	1313-4391-10W	138.04	120.32	105.34	94.34	87.62
175-1313-4392-10W	1313-4392-10W	130.03	113.91	99.40	87.59	82.54
175-1313-4401-10W	1313-4401-10W	138.04	120.32	105.34	94.34	87.62
175-1313-4402-10W	1313-4402-10W	130.03	113.91	99.40	87.59	82.54
175-1313-4411-10W	1313-4411-10W	138.04	120.32	105.34	94.34	87.62
175-1313-4412-10W	1313-4412-10W	130.03	113.91	99.40	87.59	82.54
175-1313-4421-10W	1313-4421-10W	138.04	120.32	105.34	94.34	87.62
175-1313-4422-10W	1313-4422-10W	130.03	113.91	99.40	87.59	82.54
175-1382-5	ARTIC 138 W/5RW SHANK	94.58	82.80	77.65	71.45	65.08
175-1442-5	ARTIC 144 W/5RW SHANK	94.58	82.80	77.65	71.45	65.08
175-1503-5	ARTIC 150 W/5RW SHANK	178.46	156.16	146.31	134.65	110.35
175-1633-5	ARTIC 163 W/5RW SHANK	178.46	156.16	146.31	134.65	110.35
175-1693-5	ARTIC 169 W/5RW SHANK	178.46	156.16	146.31	134.65	110.35
175-2062-4	ARTIC NON-PILOT 206 W/4RW	137.87	128.24	124.45	114.26	101.88
175-2062-5	ARTIC NON-PILOT 206 W/5RW	137.87	128.24	124.45	114.26	101.88
175-2062-6	ARTIC NON-PILOT 206 W/6RW	137.87	128.24	124.45	114.26	101.88
175-2072-5	ARTIC NON-PILOT 207 W/5RW	137.87	128.24	124.45	114.26	101.88
175-2092-5	ARTIC NON-PILOTED 209	137.87	128.24	124.45	114.26	101.88

Part Number      Part Description

1-4      5-9      10-24      25-49      50-99

Part Number	Part Description	1-4	5-9	10-24	25-49	50-99
-------------	------------------	-----	-----	-------	-------	-------

## STUD AND NUT ELECTRODES

175-2102-5	ARTIC NON-PILOTED 210	137.87	128.24	124.45	114.26	101.88
175-2102-6	ARTIC NON-PILOT 210 W/6RW	137.87	128.24	124.45	114.26	101.88
175-2123-5	ARTIC 212 W/5RW SHANK	190.87	177.50	172.26	158.13	146.31
175-2162-4	ARTIC NON-PILOT 216 W/4RW	137.87	128.24	124.45	114.26	101.88
175-2162-5	ARTIC NON-PILOT 216 W/5RW	137.87	128.24	124.45	114.26	101.88
175-2192-5	ARTIC NON-PILOT 219 W/5RW	137.87	128.24	124.45	114.26	101.88
175-2222-5	ARTIC NON-PILOT 222 W/5RW	137.87	128.24	124.45	114.26	101.88
175-2252-5	ARTIC NON-PILOT 225	137.87	128.24	124.45	114.26	101.88
175-2312-4	ARTIC NON-PILOT 231 W/4RW	137.87	128.24	124.45	114.26	101.88
175-2312-5	ARTIC NON-PILOT 231 W/5RW	137.87	128.24	124.45	114.26	101.88
175-2312-6	ARTIC NON-PILOT 231 W/6RW	137.87	128.24	124.45	114.26	101.88
175-2382-5	ARTIC NON-PILOTED 238	137.87	128.24	124.45	114.26	101.88
175-2443-5	ARTIC 244 W/5RW SHANK	190.87	177.50	172.26	158.13	146.31
175-2443-6	ARTIC 244 W/6RW SHANK	190.87	177.50	172.26	158.13	146.31
175-2503-5	ARTIC 250 W/5RW SHANK	190.87	177.59	172.26	158.13	146.31
175-2563-6	ARTIC 256 W/6RW SHANK	190.87	177.50	172.26	158.13	146.31
175-4001	400 ELECTRODE	51.61	45.19	42.37	38.94	35.53
175-4001-10W	400 STUD ELECT. W/10W	84.46	73.91	69.31	63.74	55.64
175-4011	401 ELECTRODE	51.61	45.19	42.37	38.94	35.53
175-4011-10W	401 STUD ELECT. W/10W	84.46	73.91	69.31	63.74	55.64
175-4021	402 ELECTRODE	51.61	45.19	42.37	38.94	35.53
175-4021-10W	402 STUD ELECT. W/10W	84.46	73.91	69.31	63.74	55.64
175-4031	403 ELECTRODE	51.61	45.19	42.37	38.94	35.53
175-4031-10W	403 STUD ELECT. W/10W	84.46	73.91	69.31	63.74	55.64
175-4041	404 ELECTRODE	51.61	45.19	42.37	38.94	35.53
175-4041-10W	404 STUD ELECT. W/10W	84.46	73.91	69.31	63.74	55.64
175-4051	405 ELECTRODE	51.61	45.19	42.37	38.94	35.53
175-4051-10W	405 STUD ELECT. W/10W	84.46	73.91	69.31	63.74	55.64
175-4061	406 ELECTRODE	51.61	45.19	42.37	38.94	35.53
175-4061-10W	406 STUD ELECT. W/10W	84.46	73.91	69.31	63.74	55.64
175-4071	407 ELECTRODE	51.61	45.19	42.37	38.94	35.53
175-4071-10W	407 STUD ELECT. 10W	140.32	125.55	116.27	104.46	92.67
175-4081	408 ELECTRODE	51.61	45.19	42.37	38.94	35.53
175-4111	411 ELECTRODE	62.99	55.08	51.69	47.51	43.38
175-4111-10W	411 SELF-PILOT NUT/10W	103.05	90.13	84.58	77.77	70.74
175-4121	412 ELECTRODE	62.99	55.08	51.69	47.51	43.38
175-4121-10W	412 SELF-PILOT NUT/10W	103.05	90.13	84.58	77.77	70.74
175-4131	413 ELECTRODE	62.99	55.08	51.69	47.51	43.38
175-4131-10W	413 SELF-PILOT NUT/10W	103.05	90.13	84.58	77.77	70.74
175-4141	414 ELECTRODE	62.99	55.08	51.69	47.51	43.38
175-4141-10W	414 SELF-PILOT NUT/10W	103.05	90.13	84.58	77.77	70.74
175-4151	415 ELECTRODE	62.99	55.08	51.69	47.51	43.38
175-4151-10W	415 SELF-PILOT NUT/10W	103.05	90.13	84.58	77.77	70.74
175-4161	416 ELECTRODE	62.99	55.08	51.69	47.51	43.38
175-4161-10W	416 SELF-PILOT NUT/10W	103.05	90.13	84.58	77.77	70.74
175-4211	421 ELECTRODE	75.22	69.93	67.87	62.34	55.59
175-4211-10W	421 NON-PILOT ELECT W/10W	88.53	81.28	79.67	76.71	67.10
175-4221	422 ELECTRODE	75.22	69.93	67.87	62.34	55.59
175-4221-10W	422 NON-PILOT ELECT W/10W	88.53	81.28	79.63	76.71	67.10
175-4231	423 ELECTRODE	75.22	69.93	67.87	62.34	55.59

Part Number	Part Description	1-4	5-9	10-24	25-49	50-99
-------------	------------------	-----	-----	-------	-------	-------

Part Number	Part Description	1-4	5-9	10-24	25-49	50-99
-------------	------------------	-----	-----	-------	-------	-------

## STUD AND NUT ELECTRODES

175-4231-10W	423 NON-PILOT ELECT W/10W	88.53	81.28	79.63	76.71	67.10
175-4241	424 ELECTRODE	75.22	69.93	67.87	62.34	55.59
175-4241-10W	424 NON-PILOT ELECT W/10W	88.53	81.28	79.63	76.71	67.10
175-4251	425 ELECTRODE	75.22	69.93	67.87	62.34	55.59
175-4251-10W	425 NON-PILOT ELECT W/10W	88.53	81.28	79.63	76.71	67.10
175-4261	426 ELECTRODE	75.22	69.93	67.87	62.34	55.59
175-4261-10W	426 NON-PILOT ELECT W/10W	88.53	81.28	79.63	76.71	67.10
175-4361	436 ELECTRODE	101.68	88.92	83.37	76.72	62.86
175-4361-10W	436 STUD ELECT/10W 1.5'	153.07	136.94	126.85	113.96	101.08
175-4371	437 ELECTRODE	101.68	88.92	83.37	76.72	62.86
175-4371-10W	437 STUD ELECT/10W 1.5'	153.07	136.94	126.85	113.96	101.08
175-4381	438 ELECTRODE	101.68	88.92	83.37	76.72	62.86
175-4381-10W	438 STUD ELECT/10W 1.5'	153.07	136.94	126.85	113.96	101.08
175-4391	439 ELECTRODE	101.68	88.92	83.37	76.72	62.86
175-4391-10W	439 STUD ELECT/10W 1.5'	153.07	136.94	126.85	113.96	101.08
175-4401	440 A TIP	101.68	88.92	83.37	76.72	62.86
175-4401-10W	440 STUD ELECT/10W 1.5'	153.07	136.94	126.85	113.96	101.08
175-4411	441 A TIP	101.68	88.92	83.37	76.72	62.86
175-4411-10W	441 STUD ELECT/10W 1.5'	153.07	136.94	126.85	113.96	101.08
175-4421	442 A TIP	101.68	88.92	83.37	76.72	62.86
175-4421-10W	442 STUD ELECT/10W 1.5'	153.07	136.94	126.85	113.96	101.08
175-4561	456 A TIP	111.84	97.87	91.75	84.35	69.12
175-4561-10W	456 SELF-PILOT ELECT/10W	191.19	167.26	156.83	144.21	118.17
175-4571	457 A TIP	111.84	97.87	91.75	84.35	69.12
175-4571-10W	457 SELF-PILOT NUT/10W	191.19	167.26	156.83	144.21	118.17
175-4581	458 A TIP	111.84	97.87	91.75	84.35	69.12
175-4581-10W	458 SELF-PILOT ELECT/10W	191.19	167.26	156.83	144.21	118.17
175-4591	459 A TIP	111.84	97.87	91.75	84.35	69.12
175-4591-10W	459 SELF-PILOT ELECT/10W	191.19	167.26	156.83	144.21	118.17
175-4601	460-A TIP	111.84	97.87	91.75	84.35	69.12
175-4601-10W	460 SELF-PILOT ELECT/10W	191.19	167.26	156.83	144.21	118.18
175-4611	461 A TIP	111.84	97.87	91.75	84.35	69.12
175-4621	462 A TIP	111.84	97.87	91.75	84.35	69.12
175-4621-10W	462 SELF-PILOT W/10W	191.19	167.26	156.83	144.21	118.18
175-4761	476 A TIP	108.75	101.12	98.12	90.09	83.35
175-4761-10W	476 NON-PILOT ELECT W/10W	144.30	139.44	137.83	136.22	125.99
175-4771	477 A TIP	108.75	101.12	98.12	90.09	83.35
175-4771-10W	477 NON-PILOT ELECT W/10W	144.30	139.44	137.83	136.22	125.99
175-4781	478 A TIP	108.75	101.12	98.12	90.09	83.35
175-4781-10W	478 NON-PILOT ELECT W/10W	144.30	137.91	134.66	131.41	121.55
175-4791	479 A TIP	108.75	101.12	98.12	90.09	83.35
175-4791-10W	479 NON-PILOT ELECT W/10W	144.30	137.91	134.66	131.41	121.55
175-4801	480 A TIP	108.75	101.12	98.12	90.09	83.35
175-4801-10W	480 NON-PILOT ELECT W/10W	144.30	137.91	134.66	131.41	121.55
175-5061	6mm STUD ELECTRODE	51.61	45.19	42.37	38.94	35.53
175-5061-10W	6mm STUD ELECT. W/10W	88.22	77.21	72.40	66.59	58.13
175-5071	7mm STUD ELECTRODE	51.61	45.19	42.37	38.94	35.53
175-5071-10W	7mm STUD ELECT. W/10W	88.22	77.21	72.40	66.59	58.13
175-5091	9mm STUD ELECTRODE	51.61	45.19	42.37	38.94	35.53
175-5091-10W	9mm STUD ELECT. W/10W	88.22	77.21	72.40	66.59	58.13

Part Number	Part Description	1-4	5-9	10-24	25-49	50-99
-------------	------------------	-----	-----	-------	-------	-------



Part Number	Part Description	1-4	5-9	10-24	25-49	50-99
-------------	------------------	-----	-----	-------	-------	-------

## STUD AND NUT ELECTRODES

175-5101	10mm STUD 1'BD (510)	61.05	52.13	49.65	46.24	43.38
175-5101-10W	510-1-10W STUD ELECT.	104.35	89.10	84.90	79.05	67.03
175-5102	10mm STUD ELECTRODE 1.5'	101.68	88.92	83.37	76.72	62.86
175-5102-10W	10mm STUD ELECT/10W 1.5'	153.07	136.94	126.85	113.96	101.08
175-5122	12mm STUD ELECTRODE 1.5'	101.68	88.92	83.37	76.72	62.86
175-5122-10W	12mm STUD ELECT/10W 1.5'	153.07	136.94	126.85	113.96	101.08
175-6061	6mm SELF-PILOT-NUT ELECT	62.99	55.08	51.69	47.51	43.38
175-6061-10W	6mm SELF-PILOT ELECT/10W	107.65	94.16	88.35	81.25	73.90
175-6071	7mm SELF-PILOT-NUT ELECT	62.99	55.08	51.69	47.51	43.38
175-6091	9mm SELF-PILOT-NUT ELECT	62.99	55.08	51.69	47.51	43.38
175-6091-10W	9mm SELF-PILOT ELECT/10W	107.65	94.16	88.35	81.25	73.90
175-6101	10mm SELF-PILOT-NUT ELECT	62.99	55.08	51.69	47.51	43.38
175-6101-10W	10mm SELF-PILOT ELECT/10W	105.66	92.42	86.73	79.75	72.54
175-6102	610-2 SELF PILOTED ELECT.	111.84	97.87	91.75	84.35	69.12
175-6122	612-2 TIP	111.84	97.87	91.75	84.35	69.12
175-6122-10W	612-2 SELF-PILOT W/10W	191.19	167.26	156.83	144.21	118.18
175-7061	6mm NON-PILOT-NUT ELECT	75.22	69.93	67.87	62.41	55.59
175-7061-10W	6mm /10W NON-PILOT ELECT	90.78	83.34	81.65	78.66	68.82
175-7071	7mm NON-PILOT-NUT ELECT	75.22	69.93	67.87	62.41	55.59
175-7071-10W	7mm /10W NON-PILOT ELECT	92.49	84.91	83.18	80.15	70.10
175-7091	9mm NON-PILOT-NUT ELECT	75.22	69.93	67.87	62.41	55.59
175-7091-10W	9mm /10W NON-PILOT ELECT	92.49	84.91	83.18	80.15	70.10
175-7101	10mm NON-PILOT-NUT ELECT	75.22	69.93	67.87	62.41	55.59
175-7101-10W	10mm/10W NON-PILOT ELECT	92.49	84.91	83.18	80.15	70.10
175-7102	10mm(1.5'OD) NON-PILOT EL	108.75	101.12	98.12	90.09	83.35
175-7102-10W	10mm(1.5'OD) NON-PILOT10W	144.30	142.81	141.32	136.22	125.99
175-7122	12mm NON-PILOT-NUT ELECT	108.75	101.12	98.12	90.09	83.35
175-7122-10W	12mm NON-PILOT ELECT/10W	144.30	142.81	141.32	136.22	125.99
175-GH-2-188	GH-2-188	51.98	50.14	47.38	45.54	44.10
175-GH-2-193	GH-2-193	51.98	50.14	47.38	45.54	44.10
175-GH-2-197	GH-2-197	51.98	50.14	47.38	45.54	44.10
175-GH-2-212	GH-2-212	51.98	50.14	47.38	45.54	44.10
175-GH-2-218	GH-2-218	51.98	50.14	47.38	45.54	44.10
175-GH-2-239	GH-2-239	51.98	50.14	47.38	45.54	44.10
175-GH-2-240	GH-2-240	51.98	50.14	47.38	45.54	44.10
175-GH-2-242	GH-2-242	51.98	50.14	47.38	45.54	44.10
175-GH-2-245	GH-2-245	51.98	50.14	47.38	45.54	44.10
175-GH-2-250	GH-2-250	51.98	50.14	47.38	45.54	44.10
175-GH-2-252	GH-2-252	51.98	50.14	47.38	45.54	44.10
175-GH-2-258	GH-2-258	51.98	50.14	47.38	45.54	44.10
175-GH-2-263	GH-2-263	51.98	50.14	47.38	45.54	44.10
175-GH-2-272	GH-2-272	51.98	50.14	47.38	45.54	44.10
175-GH-2-273	GH-2-273	51.98	50.14	47.38	45.54	44.10
175-GH-2-275	GH-2-275	51.98	50.14	47.38	45.54	44.10
175-GH-2-277	GH-2-277	51.98	50.14	47.38	45.54	44.10
175-GH-2-280	GH-2-280	51.98	50.14	47.38	45.54	44.10
175-GH-2-282	GH-2-282	51.98	50.14	47.38	45.54	44.10
175-GH-2-287	GH-2-287	51.98	50.14	47.38	45.54	44.10
175-GH-2-292	GH-2-292	51.98	50.14	47.38	45.54	44.10
175-GH-2-312	GH-2-312	51.98	50.14	47.38	45.54	44.10

Part Number	Part Description	1-4	5-9	10-24	25-49	50-99
-------------	------------------	-----	-----	-------	-------	-------



Part Number	Part Description	1-4	5-9	10-24	25-49	50-99
-------------	------------------	-----	-----	-------	-------	-------

## STUD AND NUT ELECTRODES

175-GH-2-322	GH-2-322	51.98	50.14	47.38	45.54	44.10
175-GH-2-325	GH-2-325	51.98	50.14	47.38	45.54	44.10
175-GH-2-332	GH-2-332	51.98	50.14	47.38	45.54	44.10
175-GH-2-342	GH-2-342	51.98	50.14	47.38	45.54	44.10
175-GH-2-347	GH-2-347	51.98	50.14	47.38	45.54	44.10
175-GH-2-352	GH-2-352	51.98	50.14	47.38	45.54	44.10
175-GH-2-354	GH-2-354	51.98	50.14	47.38	45.54	44.10
175-GH-2-357	GH-2-357	51.98	50.14	47.38	45.54	44.10
175-GH-2-359	GH-2-359	51.98	50.14	47.38	45.54	44.10
175-GH-2-368	GH-2-368	51.98	50.14	47.38	45.54	44.10
175-GH-2-372	GH-2-372	51.98	50.14	47.38	45.54	44.10
175-GH-3-188	GH-3-188	53.66	51.60	49.54	48.51	46.61
175-GH-3-193	GH-3-193	53.66	51.60	49.54	48.51	46.61
175-GH-3-200	GH-3-200	53.66	51.60	49.54	48.51	46.61
175-GH-3-242	GH-3-242	53.66	51.60	49.54	48.51	46.61
175-GH-3-245	GH-3-245	53.66	51.60	49.54	48.51	46.61
175-GH-3-247	GH-3-247	53.66	51.60	49.54	48.51	46.61
175-GH-3-251	GH-3-251	53.66	51.60	49.54	48.51	46.61
175-GH-3-254	GH-3-254	53.66	51.60	49.54	48.51	46.61
175-GH-3-262	GH-3-262	53.66	51.60	49.54	48.51	46.61
175-GH-3-264	GH-3-264	53.66	51.60	49.54	48.51	46.61
175-GH-3-272	GH-3-272	53.66	51.60	49.54	48.51	46.61
175-GH-3-273	GH-3-273	53.66	51.60	49.54	48.51	46.61
175-GH-3-312	GH-3-312	53.66	51.60	49.54	48.51	46.61
175-GH-3-317	GH-3-317	53.66	51.60	49.54	48.51	46.61
175-GH-3-322	GH-3-322	53.66	51.60	49.54	48.51	46.61
175-GH-3-326	GH-3-326	53.66	51.60	49.54	48.51	46.61
175-GH-3-332	GH-3-332	53.66	51.60	49.54	48.51	46.61
175-GH-3-337	GH-3-337	53.66	51.60	49.54	48.51	46.61
175-GH-3-347	GH-3-347	53.66	51.60	49.54	48.51	46.61
175-GH-3-351	GH-3-351	53.66	51.60	49.54	48.51	46.61
175-GH-3-352	GH-3-352	53.66	51.60	49.54	48.51	46.61
175-GH-3-357	GH-3-357	53.66	51.60	49.54	48.51	46.61
175-GH-3-372	GH-3-372	53.66	51.60	49.54	48.51	46.61
175-GH-3-392	GH-3-392	53.66	51.60	49.54	48.51	46.61
175-GH-3-397	GH-3-397	53.66	51.60	49.54	48.51	46.61
175-GH-3-412	GH-3-412	53.66	51.60	49.54	48.51	46.61
175-GH-3-417	GH-3-417	53.66	51.60	49.54	48.51	46.61
175-GH-3-423	GH-3-423	53.66	51.60	49.54	48.51	46.61
175-GH-3-425	GH-3-425	53.66	51.60	49.54	48.51	46.61
175-GH-3-427	GH-3-427	53.66	51.60	49.54	48.51	46.61
175-GH-3-430	GH-3-430	53.66	51.60	49.54	48.51	46.61
175-GH-3-432	GH-3-432	53.66	51.60	49.54	48.51	46.61
175-GH-3-437	GH-3-437	53.66	51.60	49.54	48.51	46.61
175-GH-3-445	GH-3-445	53.66	51.60	49.54	48.51	46.61
175-GH-3-447	GH-3-447	53.66	51.60	49.54	48.51	46.61
175-GH-3-452	GH-3-452	53.66	51.60	49.54	48.51	46.61
175-GH-3-465	GH-3-465	53.66	51.60	49.54	48.51	46.61
175-GH-3-467	GH-3-467	53.66	51.60	49.54	48.51	46.61
175-GH-3-470	GH-3-470	53.66	51.60	49.54	48.51	46.61

Part Number	Part Description	1-4	5-9	10-24	25-49	50-99
-------------	------------------	-----	-----	-------	-------	-------

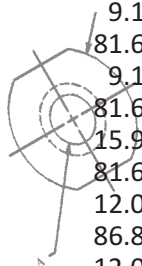
Part Number	Part Description	1-4	5-9	10-24	25-49	50-99
-------------	------------------	-----	-----	-------	-------	-------

## STUD AND NUT ELECTRODES

175-GH-3-472	GH-3-472	53.66	51.60	49.54	48.51	46.61
175-GH-3-480	GH-3-480	53.66	51.60	49.54	48.51	46.61
175-GH-3-504	GH-3-504	53.66	51.60	49.54	48.51	46.61
175-GH-3-507	GH-3-507	53.66	51.60	49.54	48.51	46.61
175-GH-3-508	GH-3-508	53.66	51.60	49.54	48.51	46.61
175-GH-3-512	GH-3-512	53.66	51.60	49.54	48.51	46.61
175-GH-3-517	GH-3-517	53.66	51.60	49.54	48.51	46.61
175-GH-3-522	GH-3-522	53.66	51.60	49.54	48.51	46.61
175-GH-3-538	GH-3-538	53.66	51.60	49.54	48.51	46.61
175-GH-3-542	GH-3-542	53.66	51.60	49.54	48.51	46.61
175-GH-3-547	GH-3-547	53.66	51.60	49.54	48.51	46.61
175-GH-3-548	GH-3-548	53.66	51.60	49.54	48.51	46.61
175-GH-3-552	GH-3-552	53.66	51.60	49.54	48.51	46.61
175-GH-3-557	GH-3-557	53.66	51.60	49.54	48.51	46.61
175-GH-3-587	GH-3-587	53.66	51.60	49.54	48.51	46.61
175-GH-3-592	GH-3-592	53.66	51.60	49.54	48.51	46.61
175-GH-3-632	GH-3-632	53.66	51.60	49.54	48.51	46.61
175-GH-3-656	GH-3-656	53.66	51.60	49.54	48.51	46.61
175-GH-4-325	GH-4-325	62.81	60.75	58.69	57.66	56.63
175-GH-4-351	GH-4-351	62.81	60.75	58.69	57.66	56.63
175-GH-4-509	GH-4-509	62.81	60.75	58.69	57.66	56.63
175-GH-4-532	GH-4-532	62.81	60.75	58.69	57.66	56.63
175-GH-4-667	GH-4-667	62.81	60.75	58.69	57.66	56.63
175-GH-4-677	GH-4-677	62.81	60.75	58.69	57.66	56.63

## METRIC CAP AND PIN NUT ELECTRODES

175-8004	MO4 4MM CAP	9.12	8.20	7.39	6.65	5.78
175-8004-10W	MO4 4MM CAP W/10W	81.66	68.08	61.68	56.07	53.32
175-8005	MO5 5MM CAP	9.12	8.20	7.39	6.65	5.98
175-8005-10W	MO5 5MM CAP W/10W	81.66	68.08	61.68	56.07	53.32
175-8006	MO6 6MM CAP	9.12	8.20	7.39	6.65	5.98
175-8006-10W	MO6 6MM CAP W/10W	81.66	68.08	61.68	56.07	53.32
175-8007	MO7 7MM CAP	9.12	8.20	7.39	6.65	5.98
175-8007-10W	MO7 7MM CAP W/10W	81.66	68.08	61.68	56.07	53.32
175-8008	MO8 8MM CAP	9.12	8.20	7.39	6.65	5.98
175-8008-10W	MO8 8MM CAP W/10W	81.66	68.08	61.68	56.07	53.32
175-8009	M09 9MM CAP	15.95	14.36	12.93	11.64	10.47
175-8009-10W	MO9 9MM CAP W/10W	81.66	68.08	61.68	56.07	53.32
175-8010	M10 10MM CAP	12.08	10.87	9.78	8.81	7.93
175-8010-10W	M10 10MM CAP W/10W	86.81	72.53	69.63	65.12	54.98
175-8011	MO11 11MM CAP	12.08	10.87	9.78	8.81	7.93
175-8011-10W	M11 11MM CAP W/10W	86.81	72.53	69.63	65.12	54.98
175-8012	M12 12MM CAP	12.08	10.87	9.78	8.81	7.93
175-8012-10W	M12 12MM CAP W./10W	86.81	72.53	69.63	65.12	54.98
175-8013	M13 13MM CAP	12.08	10.87	9.78	8.81	7.93
175-8013-10W	M13 13MM CAP W/10W	86.81	72.53	69.63	65.12	54.98
175-8014	M14 14MM CAP	22.04	19.83	17.87	16.10	14.50
175-8014-10W	M14 14MM CAP W/10W	122.99	94.05	88.27	79.58	69.45

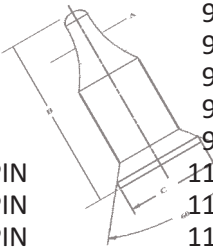


Part Number	Part Description	1-4	5-9	10-24	25-49	50-99
-------------	------------------	-----	-----	-------	-------	-------

Part Number	Part Description	1-4	5-9	10-24	25-49	50-99
-------------	------------------	-----	-----	-------	-------	-------

## METRIC CAP AND PIN NUT ELECTRODES

195-3004	4MM MO4 PIN	9.35	8.42	7.58	6.82	6.14
195-3005	5MM MO5 PIN	9.35	8.42	7.58	6.82	6.14
195-3006	6MM MO6 PIN	9.35	8.42	7.58	6.82	6.14
195-3007	7MM MO7 PIN	9.35	8.42	7.58	6.82	6.14
195-3008	8MM MO8 PIN	9.35	8.42	7.58	6.82	6.14
195-3009	9MM MO9 PIN	9.35	8.42	7.58	6.82	6.14
195-3010	10MM MO10 PIN	11.69	10.53	9.48	8.52	7.67
195-3011	11MM MO11 PIN	11.69	10.53	9.48	8.52	7.67
195-3012	12MM MO12 PIN	11.69	10.53	9.48	8.52	7.67
195-3013	13MM MO13MM PIN	11.69	10.53	9.48	8.52	7.67
195-3014	14MM M014MM PIN	16.03	14.93	13.94	13.04	13.04
195-3015	15MM MO15MM PIN	20.00	18.63	17.39	16.27	16.27

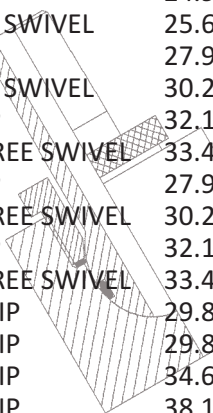


## HIGH PRESSURE ELECTRODES

180-1040	PMC-2104 HI PRESS TIP	19.60	18.14	15.66	14.23	12.15	10.84	9.72
180-1041	PME 21041 HI PRESS TIP	19.60	18.14	15.66	14.23	12.15	10.84	9.72
180-1042	PME 21042 HI PRESS TIP	19.60	18.14	15.66	14.23	12.15	10.84	9.72
180-1043	PME 21043 HI PRESS TIP	19.60	18.14	15.66	14.23	12.15	10.84	9.72
180-1044	PME 21044 HI PRESS TIP	19.60	18.14	15.66	14.23	12.15	10.84	9.72
180-1045	PME 21045 HI PRESS TIP	19.60	18.14	15.66	14.23	12.15	10.84	9.72
180-2103	PMB 2503 HI PRESS TIP	8.26	7.63	6.60	5.99	5.11	4.58	4.09
180-2104-10W	PMC-2104 WITH 10W	86.38	79.61	68.76	62.51	53.26	46.54	39.60
180-2203	PMC 2503 HI PRESS TIP	8.26	7.63	6.60	5.99	5.11	4.58	4.09
180-2203-10W	PMC-2503 WITH 10W	48.81	45.25	39.19	35.41	30.23	26.46	20.21
180-2303	PME 2503 HI PRESS TIP	8.26	7.63	6.60	5.99	5.11	4.58	4.09

## SWIVEL TIP ELECTRODES

182-0248	S-248 SWIVEL CAP	26.68	24.70	21.33	19.33	16.48	14.76	13.16
182-0249	S-249 SWIVEL CAP	29.75	27.52	23.82	21.57	18.41	16.47	14.70
182-0250	S-250 SWIVEL CAP	33.08	30.59	26.47	23.95	20.45	18.33	16.40
182-0348	S-348 TIP	24.98	23.16	19.99	18.12	13.83	13.16	11.81
182-0348-HS	S-348 HIGH DEG. SWIVEL	25.69	23.81	20.54	18.62	15.10	13.51	12.11
182-0349	S-349 TIP	24.98	23.16	19.99	18.12	15.61	13.82	12.40
182-0349-HS	S-349 HIGH DEG. SWIVEL	25.69	23.81	20.54	18.62	15.86	14.18	12.71
182-0350	S 350 SWIVEL TIP	27.97	25.84	22.37	20.26	16.47	14.76	13.20
182-0350-HS	S-350 HIGH DEG. SWIVEL	30.28	27.98	24.25	21.97	17.78	15.97	14.29
182-0351	S 351 SWIVEL TIP	32.13	29.74	25.70	23.29	18.92	16.90	15.10
182-0351-HS	S-351 HIGH DEGREE SWIVEL	33.44	30.93	26.76	24.25	19.71	17.61	15.73
182-0353	S 353 SWIVEL TIP	27.97	25.84	22.37	20.26	17.30	15.49	13.87
182-0353-HS	S-353 HIGH DEGREE SWIVEL	30.28	27.98	24.25	21.97	18.68	16.76	15.01
182-0354	S 354 SWIVEL TIP	32.13	29.74	25.70	23.29	19.87	17.75	15.86
182-0354-HS	S-354 HIGH DEGREE SWIVEL	33.44	30.93	26.76	24.25	20.70	18.48	16.52
182-1348	OS 348 SWIVEL TIP	29.89	27.64	23.88	21.63	18.47	16.52	14.76
182-1349	OS 349 SWIVEL TIP	29.89	27.64	23.88	21.63	18.47	16.52	14.76
182-1350	OS 350 SWIVEL TIP	34.61	32.03	27.69	25.09	21.43	19.16	17.12
182-1351	OS 351 SWIVEL TIP	38.17	35.34	30.59	27.67	23.60	21.18	18.88

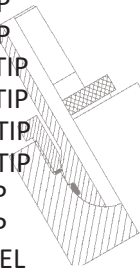


Part Number	Part Description	1-4	5-9	10-24	25-49	50-99	100-249	250-499
-------------	------------------	-----	-----	-------	-------	-------	---------	---------

Part Number	Part Description	1-4	5-9	10-24	25-49	50-99	100-249	250-499
-------------	------------------	-----	-----	-------	-------	-------	---------	---------

## SWIVEL TIP ELECTRODES

182-1353	OS 353 SWIVEL TIP	34.61	32.03	27.69	25.09	21.43	19.16	17.12
182-1354	OS 354 SWIVEL TIP	38.17	35.34	30.59	27.67	23.60	21.18	18.88
182-2353	OSH 353 SWIVEL TIP	40.31	37.29	32.25	29.25	24.97	22.31	19.98
182-2354	OSH 354 SWIVEL TIP	43.53	40.24	34.83	31.54	26.93	24.10	21.57
182-2356	OSH-356 SWIVEL TIP	49.17	45.39	39.34	35.65	28.99	25.97	24.43
182-2358	OSH-358 SWIVEL TIP	71.30	65.87	57.03	51.71	44.10	39.51	35.28
182-3353	SS-353 SWIVEL TIP	50.15	42.85	37.59	26.04	24.56	22.31	19.61
182-3354	SS-354 SWIVEL TIP	53.94	46.10	40.44	30.15	27.33	24.00	21.00
182-3360	3360 GIANT SWIVEL	369.41	331.48	285.54	259.58	221.27	197.55	175.83



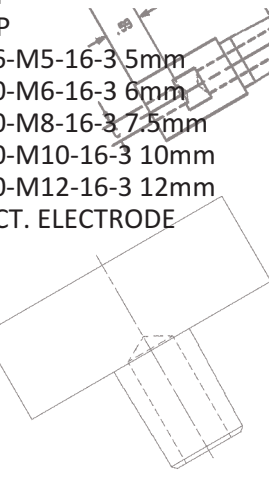
## REFRACTORY METAL FACED ELECTRODES

185-0120	A 1408 100M FACED TIP	43.38	40.14	34.71	31.49	26.83	23.99	21.45
185-0130	A 1408 100W FACED TIP	54.89	50.80	43.96	39.83	33.94	30.36	27.78
185-0150	A 1508 10W FACED TIP	28.42	26.31	22.78	20.65	17.59	15.80	14.09
185-0160	A 1508 100M FACED TIP	47.65	44.10	38.16	34.55	29.51	26.40	23.58
185-0170	A 1508 100W FACED TIP	58.21	53.82	46.57	42.19	36.04	32.23	28.79
185-1110	B 1408 10W FACED TIP	25.20	21.67	19.04	17.02	16.17	14.87	13.70
185-1120	B 1508 10W FACED TIP	28.75	24.79	21.82	19.37	18.49	16.95	15.59
185-1170	B 1508 100W FACED TIP	113.53	92.74	81.46	75.55	70.36	61.44	56.33
185-1210	C 1408 10W FACED TIP	21.77	18.75	16.46	14.68	14.00	12.85	11.78
185-1220	C 1408 100M FACED TIP	65.01	60.09	51.96	47.08	40.15	36.00	32.11
185-1230	C 1408 100W FACED TIP	82.97	76.73	66.31	60.13	51.29	46.00	40.98
185-1250	C 1508 10W FACED TIP	27.03	23.28	20.41	18.23	17.39	15.97	14.64
185-1260	C 1508 100M FACED TIP	64.10	59.28	51.29	46.48	39.61	35.49	31.71
185-1270	C 1508 100W FACED TIP	113.53	92.74	81.46	75.55	70.36	61.44	58.75



## WIRE AND BACKUP ELECTRODES

186-0015	N 15 TIP	45.58	42.24	36.49	33.03	28.23	25.15	22.53
186-0016	N 16 TIP	43.98	40.71	35.14	31.90	27.25	24.40	21.75
186-0027	N 27 TIP	45.58	42.24	36.49	33.03	20.34	18.69	16.74
186-0028	N 28 TIP	43.98	40.71	35.14	31.90	27.25	24.40	21.75
186-0101	TNFD16-M5-16-3 5mm	16.60	15.76	14.90	14.06	13.42	11.19	10.28
186-0102	TNFD20-M6-16-3 6mm	16.60	15.76	14.90	14.06	13.42	11.19	10.28
186-0103	TNFD20-M8-16-3 7.5mm	16.60	15.76	14.90	14.06	13.42	11.19	10.28
186-0104	TNFD20-M10-16-3 10mm	16.60	15.76	14.90	14.06	13.42	11.19	10.28
186-0105	TNFD20-M12-16-3 12mm	16.60	15.76	14.90	14.06	13.42	11.19	10.28
186-0220	220 RECT. ELECTRODE	25.98	23.44	20.78	18.88	17.11	15.84	14.96
186-0221	221 TIP	14.20	13.12	11.35	10.86	8.77	7.87	7.02
186-0223	223 TIP	30.40	28.16	24.34	22.04	18.77	16.85	15.08
186-0224	224 TIP	30.46	28.17	24.39	22.06	17.95	16.50	14.95
186-0225	225 TIP	38.21	35.38	30.78	28.37	26.55	24.51	22.30
186-0226	226 TIP	43.59	40.30	34.85	31.60	26.96	24.17	21.52
186-0227	227 TIP	43.59	40.30	34.85	31.60	26.96	24.17	21.52
186-0228	228 TIP	36.93	34.18	29.54	26.74	22.83	20.44	18.29
186-0229	229 TIP	36.93	34.18	29.54	26.74	22.83	20.44	18.29
186-0301	301 TIP	15.40	14.21	12.31	11.17	9.48	8.53	7.58
186-0302	302 TIP	15.40	14.21	12.31	11.17	9.48	8.53	7.58
186-0303	303 TIP	15.40	14.21	12.31	11.17	9.48	8.53	7.58
186-0304	304 TIP	15.40	14.21	12.31	11.17	9.48	8.53	7.58



Part Number	Part Description	1-4	5-9	10-24	25-49	50-99	100-249	250-499
-------------	------------------	-----	-----	-------	-------	-------	---------	---------

Part Number	Part Description	1-4	5-9	10-24	25-49	50-99	100-249	250-499
-------------	------------------	-----	-----	-------	-------	-------	---------	---------

## WIRE AND BACKUP ELECTRODES

186-0305	305 TIP	13.67	12.67	10.98	9.91	8.47	7.57	6.77
186-0306	306 TIP	13.67	12.67	10.98	9.91	8.47	7.57	6.77
186-0307	307 TIP	13.67	12.67	10.98	9.91	7.63	7.08	6.45
186-0308	308 TIP	13.67	12.67	10.98	9.91	8.47	7.57	6.77
186-0309	309 TIP	15.40	14.21	12.31	11.17	9.48	8.53	7.58
186-0310	310 TIP	15.40	14.21	12.31	11.17	9.48	8.53	7.58
186-0311	311 TIP	13.08	12.07	10.46	9.48	7.68	6.90	6.14
186-0311-10W	311 W/10W ELECTRODE	75.89	63.00	48.20	43.43	38.67	33.88	31.50
186-0312	312 TIP	15.40	14.21	12.31	11.17	9.48	8.53	7.58
186-0313	313 TIP	24.97	21.27	18.93	17.34	14.62	13.08	11.68
186-0313-10W	313 W/10W FACE	79.93	67.16	52.50	47.77	44.70	40.24	37.74
186-0315	315 TIP	39.29	36.34	31.35	27.62	25.49	22.83	20.39
186-0316	316 TIP	25.10	23.20	20.09	18.19	14.76	13.22	11.81
186-0316-10W	316 WITH 10W ELECT.	78.99	66.22	51.55	46.82	42.10	37.37	35.01
186-0507	C 507 #5RW TIP	32.12	29.79	26.76	24.09	21.84	19.58	18.16
186-0508	C 507 #4 RW TIP	32.12	29.79	26.76	24.09	21.84	19.58	18.16
186-0520	SE 4535 TIP	23.24	21.51	18.62	16.85	14.41	12.89	10.87
186-0522	SE-6332 TIP	4.82	4.42	3.83	3.49	2.99	2.68	2.41
186-0523	SE 6296 TIP	4.82	4.42	3.83	3.49	2.99	2.68	2.41
186-1313-10W	1313 WITH 10W 3.25"	107.75	87.59	74.02	64.38	57.02	50.59	45.98

## THREADED ELECTRODES

187-5062-14	5062-14-C THREADED	8.11	6.64	5.63	4.96	3.98	3.63	3.33
187-5062-16	5062-16-C THREADED	9.75	7.98	6.73	5.63	4.47	3.63	3.33
187-5100-10	5100-10-C THREADED	22.37	20.00	17.46	14.73	14.29	13.32	12.85
187-5100-11	5100-11-C THREADED	22.37	20.00	17.46	14.73	14.29	13.32	12.85
187-5100-18	5100-18-C THREADED	22.37	20.00	17.46	14.73	14.29	13.32	12.85
187-5125-10	5125-10-C THREADED	39.41	33.68	28.28	22.88	21.62	19.20	18.47
188-2425-16-E	TH-2425-16-E	8.23	7.62	7.02	6.12	4.42	3.87	3.05
188-2431-16-A	TH-2431-16-A	8.23	7.62	7.02	6.12	4.42	3.87	3.05
188-2431-16-AZ	TH-2431-16-AZ	8.47	7.87	7.26	6.36	4.63	4.09	3.27
188-2437-16-AZ	TH-2437-16-AZ	8.47	7.87	7.26	6.36	4.63	4.09	3.27
188-2450-16-AZ	TH-2450-16-AZ	8.47	7.87	7.26	6.36	4.63	4.09	3.27
188-2450-16-C	TH-2450-16-C	8.23	7.62	7.02	6.12	4.42	3.87	3.05
188-2450-16-E	TH-2450-16-E	8.23	7.62	7.02	6.12	4.42	3.87	3.05
188-3425-16-E	TH-3425-16-E	9.08	8.47	7.87	6.96	5.75	4.84	3.94
188-3437-16-C	TH-3437-16-C	9.08	8.47	7.87	6.96	5.75	4.84	3.94
188-3437-16-E	TH-3437-16-E	9.08	8.47	7.87	6.96	5.75	4.84	3.94
188-3450-16-A	TH-3450-16-A	9.08	8.47	7.87	6.96	5.75	4.84	3.94
188-3450-16-C	TH-3450-16-C	9.08	8.47	7.87	6.96	5.75	4.84	3.94
188-3450-16-E	TH-3450-16-E	9.08	8.47	7.87	6.96	5.75	4.84	3.94
188-5062-14	5062-14-E THREAD ELECT.	8.11	6.64	5.63	4.96	3.98	3.63	3.33
188-5100-10	5100-10-E THREADED	22.37	20.00	17.46	14.73	14.29	13.32	12.85
188-5100-11	5100-11-E THREADED	22.37	20.00	17.46	14.73	14.29	13.32	12.85
188-5100-18	5100-18-E THREADED	22.37	20.00	17.46	14.73	14.29	13.32	12.85
188-5125-10	5125-10-E THREADED	39.41	33.68	28.28	22.88	21.62	19.20	18.47

Part Number	Part Description	1-4	5-9	10-24	25-49	50-99	100-249	250-499
-------------	------------------	-----	-----	-------	-------	-------	---------	---------



Part Number	Part Description	1-4	5-9	10-24	25-49	50-99
-------------	------------------	-----	-----	-------	-------	-------

## HEXAGON ELECTRODE ADAPTERS

190-1408	AD 124 - 8 ADAPTER	16.97	14.94	12.90	11.61	10.89
190-1410	AD 124-1.0 ADAPTER	18.79	16.59	14.26	12.82	12.06
190-1412	AD 124 - 1.2 ADAPTER	20.71	18.20	15.67	14.12	13.27
190-1415	AD 124 - 1.5 ADAPTER	22.56	19.77	17.11	15.39	14.46
190-1417	AD 124 - 1.7 ADAPTER	24.40	21.41	18.49	16.63	15.65
190-1420	AD 124-2.0 ADAPTER	26.27	23.10	19.90	17.92	16.84
190-1425	AD 124 - 2.5 ADAPTER	28.10	24.72	21.34	19.19	18.04
190-1430	AD 124 - 3.0 ADAPTER	30.02	26.39	22.74	20.46	19.24
190-1435	AD 124 - 3.5 ADAPTER	32.17	28.26	25.61	23.06	21.68
190-1440	AD 124 - 4.0 ADAPTER	34.75	30.52	27.68	24.91	23.39
190-1508	AD 125.8 ADAPTER	16.97	14.94	12.90	11.61	10.89
190-1510	AD 125 - 1.0 ADAPTER	18.79	16.59	14.26	12.82	12.06
190-1512	AD 125 - 1.2 ADAPTER	20.71	18.20	15.67	14.12	13.27
190-1515	AD 125 - 1.5 ADAPTER	22.56	19.77	17.11	15.39	14.46
190-1517	AD 125 - 1.7 ADAPTER	24.40	21.41	18.49	16.63	15.65
190-1520	AD 125 - 2.0 ADAPTER	26.27	23.10	19.90	17.92	16.84
190-1525	AD 125 - 2.5 ADAPTER	28.10	24.72	21.34	19.19	18.04
190-1530	AD 125 - 3.0 ADAPTER	30.02	26.39	22.74	20.46	19.24
190-1535	AD 125 - 3.5 ADAPTER	32.17	28.26	25.61	23.06	21.68
190-1540	AD 125 - 4.0 ADAPTER	34.75	30.52	27.68	24.91	23.39
190-2408	AD 584 ADAPTER	16.97	14.94	12.90	11.61	10.89
190-2508	AD 585 ADAPTER	16.97	14.94	12.90	11.61	10.89
190-2510	AD 585-1.0 ADAPTER	18.79	16.59	14.97	13.46	12.67
190-2512	AD 585-1.2 ADAPTER	20.71	18.20	16.45	14.82	13.94
190-2515	AD 585-1.5 ADAPTER	22.56	19.77	17.96	16.17	15.19
190-2517	AD 585-1.75 ADAPTER	24.40	21.41	19.42	17.46	16.42
190-3211	AD-134-1.1 4RW 7/8NF ADT	22.36	19.61	16.85	15.27	14.88
190-3212	AD-134-1.2 4RW 7/8NF ADT	23.60	20.69	18.74	16.91	16.48
190-3213	AD-134-1.3 4RW 7/8NF ADT	24.85	21.78	19.77	17.82	17.38
190-3215	AD-134-1.5 4RW 7/8NF ADT	29.90	26.20	23.80	21.40	20.14
190-3217	AD-134-1.7 4RW 7/8NF ADT	32.78	28.75	26.03	23.45	22.01
190-3220	AD-134-2.0 4RW 7/8NF ADT	41.03	36.03	32.66	29.37	27.59
190-3222	AD-134-2.2 4RW 7/8NF ADT	42.85	37.65	34.12	30.70	28.84
190-3225	AD-134-2.5 4RW 7/8NF ADT	44.68	39.26	35.54	32.01	30.09
190-3230	AD-134-3.0 4RW 7/8NF ADT	48.18	42.40	38.33	34.51	32.43
190-3235	AD-134-3.5 4RW 7/8NF ADT	51.79	45.53	41.17	37.02	34.82
190-3311	AD-135-1.1 5RW 7/8NF ADT	22.36	19.61	16.85	15.27	14.88
190-3312	AD-135-1.2 5RW 7/8NF ADT	23.60	20.69	18.74	16.91	16.48
190-3313	AD-135-1.3 5RW 7/8NF ADT	24.85	21.78	19.77	17.82	17.38
190-3315	AD-135-1.5 5RW 7/8NF ADT	29.90	26.20	23.80	21.40	20.14
190-3317	AD-135-1.7 5RW 7/8NF ADT	32.78	28.75	26.03	23.45	22.01
190-3320	AD-135-2.0 5RW 7/8NF ADT	41.03	36.03	32.66	29.37	27.59
190-3322	AD-135-2.2 5RW 7/8NF ADT	42.85	37.65	34.12	30.70	28.84
190-3325	AD-135-2.5 5RW 7/8NF ADT	44.68	39.26	35.54	32.01	30.09
190-3330	AD-135-3.0 5RW 7/8NF ADT	48.18	42.40	38.33	34.51	32.43
190-3335	AD-135-3.5 5RW 7/8NF ADT	51.79	45.53	41.17	37.02	34.82
190-3513	AD-345-1.375 ADAPTER	23.67	20.74	18.85	16.96	16.56
190-3515	AD 345 - 1.5 ADAPTER	28.46	24.95	22.66	20.38	19.15
190-3517	AD 345 - 1.75 ADAPTER	31.20	27.38	24.79	22.33	20.97
190-3520	AD 345 - 2.00 ADAPTER	39.08	34.31	31.10	27.97	26.28

Part Number	Part Description	1-4	5-9	10-24	25-49	50-99
-------------	------------------	-----	-----	-------	-------	-------

Part Number	Part Description	1-4	5-9	10-24	25-49	50-99
-------------	------------------	-----	-----	-------	-------	-------

## HEXAGON ELECTRODE ADAPTERS

190-3525	AD 345 - 2.5 ADAPTER	42.56	37.40	32.87	30.49	28.66
190-3530	AD 345 - 3.0 ADAPTER	45.89	40.38	36.51	32.87	30.89
190-3535	AD 345 - 3.5 ADAPTER	49.34	43.36	39.20	35.27	33.17
190-3540	AD 345-4.0 ADAPTER	65.86	57.92	52.41	47.17	44.33
190-3550	AD 345-5.0 ADAPTER	74.32	65.32	59.17	53.28	50.05
190-3613	AD-346-1.375 ADAPTER	23.67	20.74	18.85	16.96	16.56
190-3615	AD 346 - 1.5 ADAPTER	28.46	24.95	22.66	20.38	19.15
190-3620	AD 346-2.0 ADAPTER	39.08	34.31	31.10	27.97	26.28
190-3625	AD 346-2.5 ADAPTER	42.56	37.40	33.87	30.49	28.66
190-3630	AD 346-3.0 ADAPTER	45.89	40.38	36.51	32.87	30.89
190-3635	AD 346-3.5 ADAPTER	49.34	43.36	39.20	35.27	33.17
190-3640	AD 346-4.0 ADAPTER	65.86	57.92	52.41	47.17	44.33
190-3645	AD-346-4.5 ADAPTER	69.79	61.58	55.71	50.17	47.14
190-3650	AD-346-5.0 ADAPTER	74.32	65.32	59.17	53.28	50.05
190-3715	AD 347 - 1.5 ADAPTER	29.30	25.72	23.36	20.99	19.74
190-3720	AD 347-2.0 ADAPTER	39.08	34.31	31.10	27.97	26.28
190-3725	AD 347 - 2.5 ADAPTER	42.56	37.40	33.87	30.49	28.66
190-3730	AD 347 - 3.0 ADAPTER	45.89	40.38	36.51	32.87	30.89
190-3735	AD 347 - 3.5 ADAPTER	49.34	43.36	39.20	35.27	33.17
190-3740	AD 347-4.0 ADAPTER	65.86	57.92	52.41	47.17	44.33
190-3745	AD 347-4.5 ADAPTER	69.79	61.58	55.71	50.17	47.14
190-3750	AD 347-5.0 ADAPTER	74.32	65.32	59.17	53.28	50.05
190-4311	AD-105-1.1 5RW 1-12NF	22.36	19.61	16.85	15.27	14.88
190-4312	AD-105-1.2 5RW 1-12NF	23.60	20.69	18.74	16.91	16.48
190-4313	AD-105-1.3 5RW 1-12NF	24.85	21.78	19.77	17.82	17.38
190-4315	AD-105-1.5 5RW 1-12NF	29.90	26.20	23.80	21.40	20.14
190-4317	AD-105-1.7 5RW 1-12NF	32.78	28.75	26.03	23.45	22.01
190-4320	AD-105-2.0 5RW 1-12NF	41.03	36.03	32.66	29.37	27.59
190-4322	AD-105-2.2 5RW 1-12NF	42.85	37.65	34.12	30.70	28.84
190-4325	AD-105-2.5 5RW 1-12NF	44.68	39.26	35.54	32.01	30.09
190-4327	AD-105-2.7 5RW 1-12NF	46.39	41.12	37.11	33.59	30.85
190-4330	AD-105-3.0 5RW 1-12NF	48.18	42.40	38.33	34.51	32.43
190-4335	AD-105-3.5 5RW 1-12NF	51.79	45.53	41.17	37.02	34.82
190-4520	AD 45 -2 ADAPTER	22.15	19.76	18.29	16.43	15.44
190-4530	AD 45 - 3 ADAPTER	24.17	21.53	19.85	17.86	16.82
190-4540	AD 45 -4 ADAPTER	37.73	33.43	31.47	19.31	18.15
190-5410	AD-54-1 ADAPTER	14.51	13.64	12.90	11.61	10.89
190-5420	AD 54 -2 ADAPTER	17.92	15.97	14.80	13.29	12.49
190-5430	AD 54 -3 ADAPTER	19.54	17.41	16.05	14.45	13.59
190-5440	AD 54 -4 ADAPTER	26.04	23.27	21.72	16.64	15.61
190-5520	AD 55 - 2 ADAPTER	17.92	15.97	14.80	13.29	12.49
190-5525	AD-55-2.5 ADAPTER	23.39	20.14	18.34	16.95	15.14
190-5540	AD-55-4 ADAPTER	28.55	25.45	22.96	20.55	19.38
190-5550	AD-55-5 ADAPTER	29.29	25.71	23.32	20.99	19.73
190-5620	AD 56 - 2 ADAPTER	22.32	19.63	17.76	16.00	15.04
190-6410	AD-64-1 ADAPTER	34.34	30.20	27.34	24.60	23.13
190-6510	AD-65-1 ADAPTER	34.34	30.20	27.34	24.60	23.13
190-7410	AD 74-1 ADAPTER	34.34	30.20	27.34	24.60	23.13
190-7510	AD 75 - 1 ADAPTER	15.45	13.59	12.30	11.82	11.58
190-7520	AD 75-2 ADAPTER	40.79	35.83	32.44	29.19	27.44

Part Number	Part Description	1-4	5-9	10-24	25-49	50-99
-------------	------------------	-----	-----	-------	-------	-------

Part Number	Part Description	1-4	5-9	10-24	25-49	50-99
-------------	------------------	-----	-----	-------	-------	-------

## HEXAGON ELECTRODE ADAPTERS

190-8430	AD 584 - 30 ADAPTER	63.64	55.94	50.62	45.56	42.83
190-8490	AD 584 -90 ADAPTER	63.64	55.94	50.62	45.56	42.83
190-8530	AD 585 - 30 ADAPTER	63.64	55.94	50.62	45.56	42.83
190-8590	AD 585 - 90 ADAPTER	63.64	55.94	50.62	45.56	42.83
190-8690	AD 346-90 ADAPTER	68.18	59.94	54.26	48.82	45.89
190-8720	AD-345-90 ADAPTER	90.67	82.19	80.97	76.96	71.19
190-8730	AD 347-30 ADAPTER	90.67	82.19	80.97	76.96	71.19
190-8790	AD 347 -90 ADAPTER	90.67	82.19	80.97	76.96	71.19
190-9549	AD 54-90 ADAPTER	67.64	59.44	53.81	48.42	45.51
190-9553	AD 55-30 ADAPTER	67.64	59.44	53.81	48.42	45.51
190-9559	AD 55-90 ADAPTER	67.64	59.44	53.81	48.42	45.51
190-9590	AD-585-90 EJECTOR	82.63	79.80	76.96	73.41	71.19
190-9591	AD-785-90 EJECTOR	82.63	79.80	76.96	73.41	71.19

## CYLINDER MOUNTED HOLDERS

194-1571	653-0080-1 (7/8-14THD)	340.29	253.00	215.05	204.93	180.90
194-1572	653-0080-2 (7/8-14THD)	340.29	253.00	215.05	204.93	180.90
194-1573	653-0080-3 (7/8-14THD)	340.29	253.00	215.05	204.93	180.90
194-1574	653-0080-4 (7/8-14THD)	340.29	253.00	215.05	204.93	180.90
194-1575	653-0080-5 (7/8-14THD)	208.73	170.78	151.80	139.15	129.03
194-1576	653-0080-6 (7/8-14THD)	208.73	170.78	151.80	139.15	129.03
194-1577	653-0080-7 (7/8-14THD)	208.73	170.78	151.80	139.15	129.03
194-1578	653-0080-8 (7/8-14THD)	208.73	170.78	151.80	139.15	129.03
194-1581	653-0080-1 HOLDER	190.00	175.80	155.85	135.62	110.69
194-1582	653-0080-2 HOLDER	190.00	175.80	155.85	135.62	110.69
194-1583	653-0080-3 HOLDER	190.00	175.80	155.85	135.62	110.69
194-1584	653-0080-4 HOLDER	190.00	175.80	155.85	135.62	110.69
194-1585	653-0080-5 HOLDER	190.00	175.80	155.85	135.62	110.69
194-1586	653-0080-6 HOLDER	190.00	175.80	155.85	135.62	110.69
194-1587	653-0080-7 HOLDER	190.00	175.80	155.85	135.62	110.69
194-1588	653-0080-8 HOLDER	190.00	175.80	155.85	135.62	110.69
194-1592	653-0080-2 3/4" NPT	190.00	175.80	155.85	135.62	110.69
194-1594	653-0080-4 3/4" NPT	190.00	175.80	155.85	135.62	110.69
194-1596	653-0080-6 3/4" NPT	190.00	175.80	155.85	135.62	110.69
194-1598	653-0080-8 3/4" NPT	190.00	175.80	155.85	135.62	110.69

## METRIC NUT WELDING HOLDERS

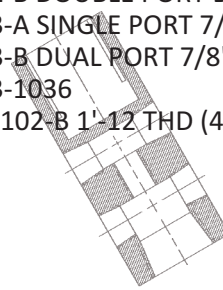
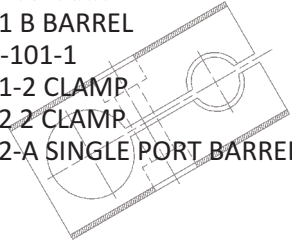
301-0004	TDH-25A Base 1'od. 4RW	46.69	46.69	31.78	26.21	22.93
301-0005	TDH-25C Base 1'od. 5RW	46.69	46.69	31.78	26.21	22.93
301-0006	TDH-25C Base 1'od 5/8-11T	54.48	54.48	37.11	28.43	24.93
301-0015	TDH-30A Base 1.1'od. 5RW	54.88	54.88	38.33	32.76	30.79
301-0020	TDH-35A 1.25 5RW	58.21	58.21	40.99	35.42	33.46

Part Number	Part Description	1-4	5-9	10-24	25-49	50-99
-------------	------------------	-----	-----	-------	-------	-------

Part Number	Part Description	1-9	10-24	Part Number	Part Description	1-9	10-24
-------------	------------------	-----	-------	-------------	------------------	-----	-------

## STRAIGHT HOLDER COMPONENTS

194-2020	101 A BARREL	46.82	44.47	194-2075	102-B DOUBLE PORT BAR-	61.28	58.22
194-2025	101 B BARREL	53.91	51.09	194-2080	103-A SINGLE PORT 7/8'-14	78.61	53.75
194-2026	SH-101-1	131.32	98.11	194-2081	103-B DUAL PORT 7/8'-14	88.49	53.77
194-2040	101-2 CLAMP	48.90	46.03	194-2082	653-1036	96.60	72.45
194-2060	102-2 CLAMP	63.17	60.02	194-2085	SH-102-B 1'-12 THD (4887)	68.62	63.12
194-2070	102-A SINGLE PORT BARREL	55.11	53.52				



## WATER TUBES

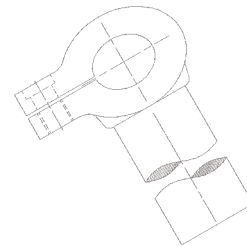
194-3107	301-.7 TUBE	4.63	3.74	194-3150	301-5.0 TUBE	10.75	8.21
194-3110	301-1.0 TUBE	4.95	3.84	194-3207	312-.7 TUBE	4.05	3.18
194-3112	301-1.2 TUBE	5.24	4.31	194-3210	312-1.0 WATER TUBE	4.17	3.21
194-3115	301-1.5 TUBE	5.54	4.40	194-3212	312-1.2 TUBE	4.26	3.58
194-3117	301-1.7 TUBE	6.20	4.44	194-3215	312-1.5 TUBE	4.88	3.74
194-3120	301-2.0 WATER TUBE	6.38	4.50	194-3217	312-1.7 TUBE	4.95	4.31
194-3125	301-2.5 TUBE	6.66	4.55	194-3220	312-2.0 WATER TUBE	5.58	4.42
194-3130	301-3.0 TUBE	7.28	4.88	194-3225	312-2.5 TUBE	5.90	4.60
194-3135	301-3.5 WATER TUBE	7.55	5.18	194-3230	312-3.0 WATER TUBE	6.26	4.71
194-3140	301-4.0 WATER TUBE	7.84	5.48	194-3235	312-3.5 TUBE	6.62	4.81
194-3145	301-4.5 WATER TUBE	8.72	6.05	194-3240	312-4.0 TUBE	6.93	4.93
				194-3245	312-4.5 TUBE	7.30	6.06

## TEETER-TIP DUAL HOLDERS

191-1408-1.5	TT-1408-	200.18	174.47	191-5524-5.0	TT-15524	346.95	327.89
191-1408-2.0	TT-1408-	200.18	174.47	191-5524-6.0	TT-15524	346.95	327.89
191-1416-3.0	TT-1416-	219.23	206.88	191-5616-2.5	TT-15616	295.48	282.14
191-1416-4.0	TT-1416-	219.23	206.88	191-5616-3.2	TT-15616	295.48	282.14
191-1508-1.5	TT-1508-	200.18	174.47	191-5616-4.0	TT-15616	295.48	282.14
191-1508-2.0	TT-1508-	200.18	174.47	191-5624-5.0	TT-15624	348.87	327.89
191-1516-3.0	TT-1516-	219.23	206.88	191-5624-6.0	TT-15624	348.87	327.89
191-1516-4.0	TT-1516-	219.23	206.88	191-5716-2.5	TT-15716-	295.48	282.14
191-5516-2.5	TT-15516	282.14	272.93	191-5716-3.2	TT-15716-	295.48	282.14
191-5516-3.2	TT-15516	282.14	272.93	191-5716-4.0	TT-15716-	295.48	282.14
191-5516-4.0	TT-15516	282.14	272.93	191-5724-5.0	TT-15724-	346.95	327.89
				191-5724-6.0	TT-15724	346.95	327.89

## T-CONNECTOR HOLDER

192-1000	T 1 TEE CONNECTOR	235.54	211.99
192-1100	T-1-1 TEE CONNECTOR	235.54	211.99
192-1250	T 125 TEE CONNECTOR	235.54	211.99
192-1500	T 15 TEE CONNECTOR	259.71	235.54



Part Number	Part Description	1-9	10-24	Part Number	Part Description	1-9	10-24
-------------	------------------	-----	-------	-------------	------------------	-----	-------



Part Number	Part Description	1-9	10-24	Part Number	Part Description	1-9	10-24
-------------	------------------	-----	-------	-------------	------------------	-----	-------

## NICKEL PLATED EJECTOR HOLDERS

319-0206	NHE-08035 NICKEL HOLDER	103.20	94.74	319-0217	NHE-10085 NICKEL HOLDER	139.63	122.42
319-0207	NHE-10035 NICKEL HOLDER	105.44	97.87	319-0231	NHE-06124 NICKEL HOLDER	143.93	136.33
319-0211	NHE-06084 NICKEL HOLDER	124.43	114.59	319-0232	NHE-07124 NICKEL HOLDER	147.51	139.02
319-0212	NHE-07084 NICKEL HOLDER	127.84	118.00	319-0233	NHE-08124 NICKEL HOLDER	166.57	147.89
319-0213	NHE-08084 NICKEL HOLDER	135.71	123.79	319-0234	NHE-10124 NICKEL HOLDER	184.03	169.54
319-0214	NHE-10084 NICKEL HOLDER	152.75	140.21	319-0236	NHE-08125 NICKEL HOLDER	150.10	131.61
319-0216	NHE-08085 NICKEL HOLDER	131.29	115.54	319-0237	NHE-10125 NICKEL HOLDER	161.93	142.37

## GOLDCROWN EJECTOR HOLDERS

320-0100	E 05084 HOLDER	126.55	117.34	320-0300	E-10086 HOLDER	245.35	158.49
320-0120	E-05124 HOLDER	146.50	135.86	320-0310	E-10087 HOLDER	245.35	158.49
320-0140	E 06084 HOLDER	122.57	111.46	320-0320	E-10124 HOLDER	184.52	166.43
320-0150	E-06085 HOLDER	133.21	117.34	320-0325	E-10124-A HOLDER	216.12	200.74
320-0160	E-06124 HOLDER	153.16	135.86	320-0330	E 10125 HOLDER	184.52	166.43
320-0170	E-06125 HOLDER	153.16	135.86	320-0335	E 10125 A HOLDER	216.12	200.74
320-0180	E-07084 HOLDER	126.65	115.20	320-0340	E 10126 HOLDER	249.95	185.57
320-0190	E-07085 HOLDER	137.66	121.27	320-0350	E 10127 HOLDER	249.95	185.57
320-0200	E-07124 HOLDER	141.03	128.51	320-0360	E 12084 HOLDER	205.83	182.64
320-0210	E-07125 HOLDER	162.10	142.80	320-0365	E 12084-A HOLDER	224.03	184.49
320-0220	E-08084 HOLDER	153.16	146.54	320-0370	E 12085 HOLDER	224.03	182.64
320-0225	E-08084-A HOLDER	157.33	148.62	320-0375	E 12085 A HOLDER	224.03	184.49
320-0230	E-08085 HOLDER	153.16	146.54	320-0380	E 12086 HOLDER	224.03	184.49
320-0235	E-08085-A HOLDER	157.33	148.62	320-0390	E 12087 HOLDER	224.03	184.49
320-0240	E-08086 HOLDER	186.40	146.54	320-0400	E 12088 HOLDER	224.03	184.49
320-0250	E-08124 HOLDER	186.40	174.14	320-0410	E 12124 HOLDER	224.03	206.94
320-0255	E-08124-A HOLDER	207.61	177.18	320-0415	E 12124 A HOLDER	242.57	230.81
320-0260	E-08125 HOLDER	186.40	174.14	320-0420	E 12125 HOLDER	224.03	206.94
320-0265	E-08125-A HOLDER	207.61	177.18	320-0425	E 12125 A HOLDER	242.57	230.81
320-0270	E-08126 HOLDER	215.29	202.00	320-0440	E 12126 HOLDER	283.21	230.81
320-0280	E-10084 HOLDER	176.03	166.42	320-0450	E 12127 HOLDER	283.21	230.81
320-0285	E-10084 A HOLDER	214.51	172.82	320-0460	E 12128 HOLDER	283.21	230.81
320-0290	E-10085 HOLDER	159.25	150.57	320-1000	LDE 08064 HOLDER	150.08	147.77
320-0295	E-10085-A HOLDER	214.51	172.82	320-1005	LDE 08065 HOLDER	150.08	147.77

## STANDARD EJECTOR HOLDERS

321-0220	SHE-08084 HOLDER	120.19	110.14	321-0350	SHE-10127 HOLDER	176.12	168.43
321-0230	SHE-08085 HOLDER	120.19	110.14	321-0360	SHE-12084 HOLDER	156.28	141.83
321-0240	SHE-08086 HOLDER	155.13	146.47	321-0370	SHE-12085 HOLDER	156.28	141.83
321-0250	SHE-08124 HOLDER	140.93	121.08	321-0375	SHE-12085-A HOLDER	177.72	167.48
321-0260	SHE-08125 HOLDER	140.93	121.08	321-0380	SHE-12086 HOLDER	168.84	159.11
321-0270	SHE-08126 HOLDER	140.93	121.08	321-0385	SHE-12086-A HOLDER	192.84	185.82
321-0280	SHE-10084 HOLDER	137.59	121.69	321-0390	SHE-12087 HOLDER	168.84	159.11
321-0290	SHE-10085 HOLDER	137.59	121.69	321-0410	SHE-12124 HOLDER	177.72	167.48
321-0300	SHE-10086 HOLDER	163.83	151.73	321-0415	SHE-12124-A HOLDER	203.00	195.60
321-0310	SHE-10087 HOLDER	163.83	151.73	321-0420	SHE-12125 HOLDER	161.74	144.85
321-0320	SHE-10124 HOLDER	154.60	136.74	321-0425	SHE-12125-A HOLDER	203.00	195.60
321-0330	SHE-10125 HOLDER	154.60	136.74	321-0440	SHE-12126 HOLDER	252.03	241.60
321-0340	SHE-10126 HOLDER	176.12	168.43	321-0450	SHE-12127 HOLDER	247.83	237.57

Part Number	Part Description	1-9	10-24	Part Number	Part Description	1-9	10-24
-------------	------------------	-----	-------	-------------	------------------	-----	-------



Part Number	Part Description	1-9	10-24	Part Number	Part Description	1-9	10-24
-------------	------------------	-----	-------	-------------	------------------	-----	-------

## GOLDCROWN NON-EJECTOR HOLDERS

325-0100	N-05084 HOLDER	96.31	90.22	325-0290	N-10085 HOLDER	111.97	105.96
325-0120	N-05124 HOLDER	107.12	104.34	325-0295	N-10085-A HOLDER	140.37	124.66
325-0140	N-06084 HOLDER	99.52	90.62	325-0300	N-10086 HOLDER	116.68	103.63
325-0150	N-06085 HOLDER	99.52	90.62	325-0310	N-10087 HOLDER	116.68	103.63
325-0160	N-06124 HOLDER	103.16	93.48	325-0315	N-10087-A HOLDER	140.37	129.92
325-0170	N-06125 HOLDER	103.16	93.48	325-0320	N-10124 HOLDER	138.59	130.59
325-0180	N-07084 HOLDER	104.65	99.78	325-0325	N-10124-A HOLDER	166.81	149.30
325-0190	N-07085 HOLDER	104.65	99.78	325-0330	N-10125 HOLDER	138.59	130.59
325-0200	N-07124 HOLDER	108.67	97.06	325-0335	N-10125-A HOLDER	166.81	149.30
325-0210	N-07125 HOLDER	108.67	97.06	325-0340	N-10126 HOLDER	141.66	134.55
325-0220	N-08084 HOLDER	107.56	103.00	325-0350	N-10127 HOLDER	141.66	134.55
325-0225	N-08084-A HOLDER	126.86	114.49	325-0360	N-12084 HOLDER	133.73	126.39
325-0230	N-08085 HOLDER	107.56	103.00	325-0365	N-12084-A HOLDER	143.56	134.29
325-0235	N-08085-A HOLDER	126.86	114.49	325-0370	N-12085 HOLDER	133.73	126.39
325-0240	N-08086 HOLDER	123.01	115.53	325-0375	N-12085-A HOLDER	143.56	134.29
325-0250	N-08124 HOLDER	121.26	110.23	325-0380	N-12086 HOLDER	141.74	131.14
325-0255	N-08124-A HOLDER	147.26	127.34	325-0385	N-12086-A HOLDER	143.56	134.29
325-0260	N-08125 HOLDER	121.26	110.23	325-0390	N-12087 HOLDER	141.74	131.14
325-0265	N-08125-A HOLDER	147.26	127.34	325-0410	N-12124 HOLDER	157.49	145.71
325-0270	N-08126 HOLDER	137.84	115.56	325-0420	N-12125 HOLDER	157.49	145.71
325-0280	N-10084 HOLDER	111.97	105.96	325-0425	N-12125-A HOLDER	166.85	158.36
325-0285	N-10084-A HOLDER	140.37	140.37	325-0440	N-12126 HOLDER	159.21	146.92
				325-0450	N-12127 HOLDER	159.21	146.92

## STANDARD NON-EJECTOR HOLDERS

326-0220	SHN-08084 HOLDER	90.28	81.41	326-0320	SHN-10124 HOLDER	116.75	99.04
326-0225	SHN-08084-A HOLDER	121.16	109.84	326-0325	SHN-10124-A	144.87	137.83
326-0230	SHN 08085 HOLDER	90.28	81.41	326-0330	SHN-10125 HOLDER	116.75	99.04
326-0235	SHN-08085-A	121.16	109.84	326-0335	SHN-10125-A HOLDER	144.87	137.83
326-0240	SHN-08086 HOLDER	116.98	112.03	326-0340	SHN-10126 HOLDER	149.12	141.67
326-0250	SHN-08124 HOLDER	99.02	86.20	326-0350	SHN-10127 HOLDER	149.12	141.67
326-0255	SHN-08124-A HOLDER	133.91	129.16	326-0360	SHN-12084 HOLDER	127.68	113.75
326-0260	SHN-08125 HOLDER	99.02	86.20	326-0365	SHN-12084-A HOLDER	142.06	133.37
326-0265	SHN-08125-A HOLDER	133.91	129.16	326-0370	SHN-12085 HOLDER	127.68	113.75
326-0270	SHN-08126 HOLDER	131.71	126.87	326-0375	SHN-12085-A HOLDER	142.06	133.37
326-0280	SHN-10084	103.81	90.70	326-0380	SHN-12086 HOLDER	129.67	118.44
326-0285	SHN-10084-A	120.46	115.27	326-0390	SHN-12087 HOLDER	129.67	118.44
326-0290	SHN-10085 HOLDER	103.81	90.70	326-0410	SHN-12124 HOLDER	149.12	141.67
326-0295	SHN-10085-A HOLDER	111.27	106.48	326-0420	SHN-12125 HOLDER	149.12	141.67
326-0300	SHN-10086 HOLDER	133.96	128.37	326-0425	SHN-12125-A HOLDER	158.02	143.82
326-0310	SHN-10087 HOLDER	133.96	128.37	326-0440	SHN-12126 HOLDER	152.05	140.44
				326-0450	SHN-12127 HOLDER	152.05	140.44

## CLOSE-COUPLED NON-EJECTOR HOLDERS

330-0140	N-06034 HOLDER	73.37	68.90	330-0230	N-08035 HOLDER	81.52	74.20
330-0180	N-07034 HOLDER	75.40	70.08	330-0280	N-10034 HOLDER	83.57	70.48
330-0190	N-07035 HOLDER	75.40	70.08	330-0290	N-10035 HOLDER	83.57	70.48
330-0220	N-08034 HOLDER	81.52	74.20	330-0360	N-12034 HOLDER	89.67	76.89
				330-0370	N-12035 HOLDER	89.67	76.89

Part Number	Part Description	1-9	10-24	Part Number	Part Description	1-9	10-24
-------------	------------------	-----	-------	-------------	------------------	-----	-------

Part Number	Part Description
-------------	------------------

1-9	10-24
-----	-------

Part Number	Part Description
-------------	------------------

1-9	10-24
-----	-------

## OFFSET EJECTOR HOLDERS

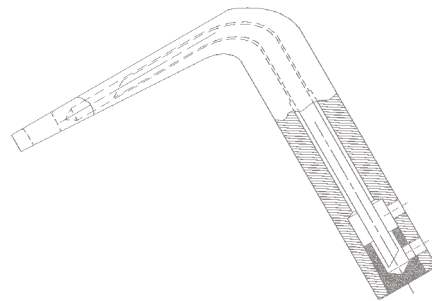
335-0010	OE 14-290 OFFSET HOLDER	363.00	277.75	335-0260	OE 155-290 OFFSET	368.51	313.63
335-0020	OE 14-430 OFFSET HOLDER	473.67	362.11	335-0270	OE 155-430 OFFSET	480.25	384.57
335-0030	OE 14-490 OFFSET HOLDER	457.34	349.61	335-0280	OE 155-490 OFFSET	412.56	365.32
335-0060	OE 15-290 OFFSET HOLDER	345.43	276.30	335-0310	OE 754-290 OFFSET	491.69	349.47
335-0070	OE 15-430 OFFSET HOLDER	473.67	362.11	335-0320	OE 754-430 OFFSET	481.86	349.52
335-0080	OE 15-490 OFFSET HOLDER	416.65	332.96	335-0330	OE 754-490 OFFSET	481.86	349.52
335-0110	OE 1254-290 OFFSET	369.75	278.65	335-0360	OE 755-290 OFFSET	491.69	349.47
335-0120	OE 1254-430 OFFSET	473.71	368.61	335-0370	OE 755-430 OFFSET	481.86	349.52
335-0130	OE 1254-490 OFFSET	457.38	355.90	335-0380	OE 755-490 OFFSET	481.86	349.52
335-0160	OE 1255-290 OFFSET	350.97	292.48	335-0410	OE 874-290 OFFSET	491.69	349.47
335-0170	OE 1255-430 OFFSET	413.62	355.90	335-0420	OE 874-430 OFFSET	481.86	349.52
335-0180	OE 1255-490 OFFSET	444.31	345.72	335-0430	OE 874-490 OFFSET	481.86	349.52
335-0210	OE 154-290 OFFSET	369.75	284.57	335-0460	OE 875-290 OFFSET	491.69	349.47
335-0220	OE 154-430 OFFSET	480.25	384.57	335-0470	OE 875-430 OFFSET	481.86	349.52
335-0230	OE 154-490 OFFSET	469.63	376.06	335-0480	OE 875-490 OFFSET	481.86	349.52

## OFFSET NON-EJECTOR HOLDERS

335-1000	ON 14-230 OFFSET HOLDER	233.85	198.25	335-1250	ON 155-230 OFFSET	526.84	500.47
335-1010	ON 14-290 OFFSET HOLDER	208.33	186.81	335-1260	ON 155-290 OFFSET	369.75	284.57
335-1020	ON 14-430 OFFSET HOLDER	250.29	237.96	335-1270	ON 155-430 OFFSET	290.24	276.75
335-1030	ON 14-490 OFFSET HOLDER	240.20	228.38	335-1280	ON 155-490 OFFSET	290.24	276.75
335-1050	ON 15-230 OFFSET HOLDER	215.91	193.61	335-1300	ON 754-230 OFFSET	279.05	267.02
335-1060	ON 15-290 OFFSET HOLDER	210.38	188.66	335-1310	ON 754-290 OFFSET	279.05	267.02
335-1070	ON 15-430 OFFSET HOLDER	254.82	242.28	335-1320	ON 754-430 OFFSET	278.88	258.76
335-1080	ON 15-490 OFFSET HOLDER	240.20	228.38	335-1330	ON 754-490 OFFSET	278.88	258.76
335-1100	ON 1254-230 OFFSET	212.35	190.52	335-1350	ON 755-230 OFFSET	279.05	267.02
335-1110	ON 1254-290 OFFSET	219.81	197.20	335-1360	ON 755-290 OFFSET HLD.	279.05	267.02
335-1120	ON 1254-430 OFFSET	255.20	243.33	335-1370	ON 755-430 OFFSET	278.88	258.76
335-1130	ON 1254-490 OFFSET	242.54	231.27	335-1380	ON 755-490 OFFSET	278.88	258.76
335-1150	ON 1255-230 OFFSET	219.81	197.20	335-1400	ON 874-230 OFFSET	242.64	211.08
335-1160	ON 1255-290 OFFSET	212.35	190.52	335-1410	ON 874-290 OFFSET HOLER	195.25	188.76
335-1170	ON 1255-430 OFFSET	257.30	245.34	335-1420	ON 874-430 OFFSET	254.75	245.54
335-1180	ON 1255-490 OFFSET	242.54	231.27	335-1430	ON 874-490 OFFSET	246.04	237.14
335-1200	ON 154-230 OFFSET	526.84	500.47	335-1450	ON 875-230 OFFSET	195.25	188.76
335-1210	ON 154-290 OFFSET	369.75	284.57	335-1460	ON 875-290 OFFSET	195.25	188.76
335-1220	ON 154-430 OFFSET	290.24	276.75	335-1470	ON 875-430 OFFSET	254.75	245.54
335-1230	ON 154-490 OFFSET	290.24	276.75	335-1480	ON 875-490 OFFSET	246.04	237.14

## PADDLE & VARIABLE OFFSET HOLDERS

345-0750	P 750-490 PADDLE HOLDER	176.54	163.95
345-0870	P 870-490 PADDLE HOLDER	180.03	167.19
345-1000	P 100-490 PADDLE HOLDER	208.56	182.95
345-1200	P 120-490 PADDLE HOLDER	222.93	196.47
345-1500	P 150-490 PADDLE HOLDER	237.09	234.22
345-7194	SH-7194 PADDLE HOLDER	312.76	253.79
345-7195	SH-7195 PADDLE HOLDER	354.37	287.73
345-7196	SH-7196 PADDLE HOLDER	364.26	311.34
345-7223	SH-7223 STR SHANK	316.94	261.28
345-7224	SH-7224 STR SHANK	316.94	261.28
345-7225	SH-7225 STR SHANK	336.09	323.46



Part Number	Part Description
-------------	------------------

1-9	10-24
-----	-------

Part Number	Part Description
-------------	------------------

1-9	10-24
-----	-------

Part Number	Part Description	1-9	10-24	Part Number	Part Description	1-9	10-24
-------------	------------------	-----	-------	-------------	------------------	-----	-------

## MULTI-TIP HOLDERS

350-4010	4010 EQUA-PRESS HOLD.1'	897.72	755.99	350-4043	4043 TRI SPACE HOLD PM	1196.07	1071.59
350-4011	4011 EQUAPRESS HOLD 1-	897.72	755.99	350-4045	4045 EQUATIP ADAPT AC	176.67	149.50
350-4012	4012 EQUAPRESS HOLD 1-	897.72	755.99	350-4046	4046 EQUATIP ADAPT AC	176.67	149.50
350-4013	4013 EQUA-PRESS HOLD	897.72	755.99	350-4050	4050 EQUATIP HOLDER 1'	360.33	258.52
350-4015	4015 EQUA-PRESS HOLD 1'	930.09	783.23	350-4051	4051 EQUATIP HOLDER 1-	360.33	258.52
350-4016	4016 EQUAPRESS HOLD 1-	930.09	783.23	350-4052	4052 EQUATIP HOLDER 1-	360.33	258.52
350-4017	4017 EQUAPRESS HOLD 1-	930.09	783.23	350-4053	4053 EQUATIP HOLDER	360.33	258.52
350-4018	4018 EQUAPRESS HOLDER	930.09	783.23	350-4054	4054 EQUATIP HOLDER	360.33	258.52
350-4020	4020 LOWER ELECTRODE 1'	256.86	207.52	350-4055	4055 EQUATIP HOLDER 1'	360.33	258.52
350-4021	4021 LOWER ELECT. 1-1/4'	256.86	207.52	350-4056	4056 EQUATIP HOLDER 1-	360.33	258.52
350-4022	4022 LOWER ELECT 1-1/2'	256.86	207.52	350-4057	4057 EQUATIP HOLDER 1-	360.33	258.52
350-4025	4025 LOWER ELECTRODE 1'	301.60	284.19	350-4058	4058 EQUATIP HOLDER	360.33	258.52
350-4026	4026 LOW.ELECTRODE 1-	301.60	284.19	350-4059	4059 EQUATIP HOLDER	360.33	258.52
350-4027	4027 LOW ELECTRODE 1-	301.60	284.19	350-4150	4150 EQATIP HOLDER 1'	561.42	349.34
350-4030	4030 LOWER HOLDER 1'	270.12	216.10	350-4151	4151 EQUATIP HOLDER 1-	561.42	349.34
350-4030-3	4030 1 1/4' TO 3' CENTERS	270.12	216.10	350-4152	4152 EQATIP HOLDER 1-	561.42	349.34
350-4031	4031 LOWER HOLDER 1-	270.12	216.10	350-4153	4153 EQUATIP HOLDER #5	561.42	349.34
350-4031-3	4031 1' TO 3'centers HOLD	270.12	216.10	350-4154	4154 EQUATIP HOLDER	561.42	349.34
350-4032	4032 LOWER HOLDER 1-	270.12	216.10	350-4155	4155 EQUATIP HOLDER 1'	561.42	349.34
350-4032-3	4032 1' TO 3'centers HOLD	270.12	216.10	350-4156	4156 EQUATIP HOLDER 1-	561.42	349.34
350-4040	4040 TRI SPACER HOLD 1'	1067.92	956.78	350-4157	4157 EQUATIP HOLDER 1-	561.42	349.34
350-4041	4041 TRI SPACE HOLD 1-1/4	1067.92	956.78	350-4158	4158 EQUATIP HOLDER #5	561.42	349.34
350-4042	4042 TRI SPACE HOLD 1-1/2	1067.92	956.78	350-4159	4159 EQUATIP HOLDER	561.42	349.34

Equa-Press Holders with tip spacing  
standard tip spacing is 2"  
over and below 1.5" to 4" 1150.00  
over 4" up to 5" 1250.00  
over 5" price on request

Equatip Holders with tip spacing  
standard tip spacing are 1" and 1.5"  
between .875 up" to 1.2" 785.00  
between 1.21 up to 1.49" 900.00  
over 1.5" price on request

## HIGH PRESSURE HOLDERS

350-4510	4510 HI PRESS HOLDER PM	145.71	123.83
350-4511	4511 HI PRESSURE HOLD 1'	147.03	124.06
350-4512	4512 HI PRESS HOLD 1-1/4'	147.03	124.06
350-4513	4513 HI PRESS HOLD 1-1/2'	147.03	124.06
350-4515	4515 S & N PM 1 HLDR	154.82	113.69
350-4520	4520 HI PRESS HOLDER PM	227.68	180.66
350-4521	4521 HI PRES HOLDER 1 1/4	194.86	160.24
350-4522	4522 HI PRES HOLDER 1 1/2	194.86	160.24

## EQUA LOWER HOLDERS

350-8030-6	8030 3' TO 6' centers HLD	338.41	270.73
350-8031-6	8031 3' TO 6' centers HLD	338.41	270.73
350-8032-6	8032 3' TO 6' centers HLD	338.41	270.73

## FAST FOLLOW-UP HOLDERS

350-4620	4620 FFU HOLDER 1' DIA	411.30	380.27
350-4621	4621 FFU HOLDER 1' DIA	411.30	380.27
350-4622	4622 FFU HOLDER 1' DIA	411.30	380.27
350-4623	4623 FFU HOLDER 1-	411.30	380.27
350-4624	4624 FFU HOLDER 1-	411.30	380.27
350-4625	4625 FFU HOLDER 1-	411.30	380.27
350-4626	4626 FFU HOLDER 1-	411.30	380.27
350-4627	4627 FFU HOLDER 1-	411.30	380.27
350-4628	4628 FFU HOLDER 1-	411.30	380.27
350-4629	4629 FFU HOLDER PM	514.12	489.46
350-4630	4630 FFU HOLDER PM	514.12	489.46
350-4631	4631 FFU HOLDER PM	514.12	489.46

## STUD & NUT HOLDERS

350-4525	4525 S & N HOLDER PM2	211.28	171.81	350-4537	4537 S&N HOLDER 1-1/2	225.87	211.34
350-4526	4526 S & N HOLDER PM2	211.28	171.81	350-4540	4540 S&N HOLDER OFFSET	477.32	396.42
350-4530	4530 S & N HOLDER 1'	156.65	139.93	350-4541	4541 S&N HOLDER OFFSET	477.32	396.42
350-4531	4531 S & N HOLDER 1-1/4'	156.65	139.93	350-4542	4542 S&N HOLDER OFFSET	477.32	396.42
350-4532	4532 S & N HOLDER 1-1/2'	156.65	139.93	350-4546	4546 S&N HOLDER OFFSET	758.49	613.60
350-4535	4535 S & N HOLDER 1'HD	225.87	211.34	350-4547	4547 S&N HOLDER OFFSET8	758.49	613.60
350-4536	4536 S&N HOLDER 1-1/4	225.87	211.34	350-4552	4552 S & N HOLDER	857.43	693.64

Part Number	Part Description	1-9	10-24	Part Number	Part Description	1-9	10-24
-------------	------------------	-----	-------	-------------	------------------	-----	-------



Part Number	Part Description	1-9	10-24	Part Number	Part Description	1-9	10-24
-------------	------------------	-----	-------	-------------	------------------	-----	-------

## PLATEN MOUNTED HOLDERS

350-4560	4560 PM HOLDER #4RW	154.82	113.62	350-4580	4580 PM-1 5/8'-11 THREAD	154.82	113.62
350-4561	4561 PM HOLDER #5 RW	154.82	113.62	350-4581	4581 PM-1 3/4'-10 THREAD	154.82	113.62
350-4562	4562 PM HOLDER #6 RW	154.82	113.62	350-4582	4582 PM-1 7/8'-14 THREAD	154.82	113.62
350-4563	4563 PM HOLDER #7 RW	154.82	113.62	350-4583	4583 PM-1 1-12 THREAD	154.82	113.62
350-4570	4570 PM HOLDER #4 RW	211.28	162.01	350-4590	4590 PM-2 5/8'-11 THREAD	211.28	162.90
350-4571	4571 PM HOLDER #5 RW	211.28	162.01	350-4591	4591 PM-2 3/4'-10 THREAD	211.28	162.90
350-4572	4572 PM HOLDER #6 RW	211.28	162.01	350-4592	4592 PM-2 7/8'-14 THREAD	211.28	162.90
350-4573	4573 PM HOLDER #7 RW	211.28	162.01	350-4593	4593 PM-2 1-12' THREAD	436.30	162.90

## WELD FORCE GAUGES

601-1361D	1361KG HALF BREED DIGITAL	824.00	772.00
601-3000D	3000LB HALF BREED DIGITAL	824.00	772.00
601-3000D-12S	3000LB DIG W/12' STIF EXT	992.00	992.00
601-5000	5000 LB GAUGE	488.00	420.00
601-5000-12	5000 LB GAUGE W/12' EXT	740.00	583.00
601-5000D	5000LB DIGITAL HALF BREED	824.00	772.00
601-6000	6000# GAUGE	893.00	714.00
601-6000-18	6000# GAUGE W/18' EXT.	1014.00	893.00
601-8004	455 KG. DIGITAL SWIVEL HD	2867.00	2756.00
601-8006	600lb Gage w/Max Hand	410.00	394.00
601-8010	1000 LB GAUGE	331.00	278.00
601-8010MD	1000 LBS. DIGITAL SWIVEL	2781.00	2678.00
601-8019	PROTECTIVE GAUGE BOX	21.00	19.00
601-8020	2000 LB GAGE	331.00	278.00
601-8020-12	8020 GUAGE W/12'EXTEN-	441.00	368.00
601-8020-SP	8020 GAUGE W/STEEL PAD	368.00	326.00
601-8021	1000 KILOS GAUGE	368.00	326.00
601-8025HD	2500 LBS. DIGITAL 1% GAUG	2940.00	2730.00
601-8025HDI	2500lbs./1133kg. DIGITAL	3833.00	3728.00
601-8030	3000# PERMA CAL GAUGE	604.00	562.00
601-8030-12	8030-12 PERMACAL GAUGE	725.00	651.00
601-8045MD-KG	0-454 KG DIGITAL GAGE	2781.00	2678.00
601-8050HD	5000lbs. DIGITAL 1% GAUGE	2940.00	2730.00
601-8050HDI	5000lbs./2266/kg. DIGITAL	3833.00	3728.00
601-8100	10000 LB GAUGE	488.00	420.00
601-8100MD	0-10000LB DIGITAL GAGE	3399.00	3296.00
601-8101	5000 KGS GAUGE	541.00	473.00
601-8113HD	1133kg. DIGITAL 1% GAUGE	2940.00	2730.00
601-8136MD	1360 KG. DIGITAL SWIVEL	2781.00	2678.00
601-8136MD-KG	0-1133KG DIGITAL GAGE	2781.00	2678.00
601-8226HD	2266kg. DIGITAL 1% GAUGE	2940.00	2835.00
601-8227MD-KG	0-2270KG DIGITAL GAGE	3193.00	3090.00
601-8300MD	3000 DIGITAL SWIVEL HEAD	2781.00	2678.00
601-8453MD-KG	0-4535KG DIGITAL GAGE	3399.00	3296.00
601-8500MD	0-5000LBS DIGITAL GAGE	3193.00	3090.00
601-9999D	10000LB DIGITAL HALFBREED	824.00	772.00

Part Number	Part Description	1-9	10-24
-------------	------------------	-----	-------

Part Number	Part Description	1-9	10-24	Part Number	Part Description	1-9	10-24
-------------	------------------	-----	-------	-------------	------------------	-----	-------

## WELD ARMS

630-7321	SH-7320-1 WELD ARM 2 X	423.92	354.26
630-7322	SH-7320-2 WELD ARM 2 X	452.32	414.48
630-7323	SH-7320-3 WELD ARM 2 X	477.36	439.27
630-7324	SH-7320-4 ARM 2-1/2 X 12	460.53	407.39
630-7325	SH-7320-5 ARM 2-1/2 X 16	522.43	487.11
630-7326	SH-7320-6 ARM 2-1/2 X 20	598.02	559.94
630-7327	SH-7320-7 WELD ARM 3 X	577.02	538.14
630-7328	SH-7320-8 WELD ARM 3 X	674.96	616.07
630-7329	SH-7320-9 WELD ARM 3 X	764.14	695.89

## ACCESSORIES

601-0004	#4RW REAMER	103.73	90.54	601-0221	EX 5-F FEMALE EXTRACTOR	60.64	56.32
601-0005	#5RW REAMER	108.26	97.86	601-0222	EX 6-F FEMALE EXTRACTOR	71.65	64.27
601-0006	#6 RW REAMER	180.43	153.05	601-0231	EX-10-A EXTRACTOR	21.62	16.76
601-0007	#7 RW REAMER	169.17	153.05	601-0240	EX 45 EXTRACTOR	92.26	86.74
601-0014	#4 CAP REAMER	111.64	91.02	601-0242	EX 56 EXTRACTOR	92.26	86.74
601-0015	#5 CAP REAMER	117.92	99.08	601-0300	00 PLUG 1/8 NPT FEMALE	4.13	3.72
601-0016	#6 CAP REAMER	124.05	103.90	601-0301	01 PLUG 1/8 NPT MALE	4.13	3.72
601-0025	5/8 - 14 PIPE TAP	349.61	281.94	601-0302	02 PLUG 1/4 NPT FEMALE	3.89	3.53
601-0102	102 TIP DRESSER	52.53	47.17	601-0303	03 PLUG 1/4 NPT MALE	3.95	3.61
601-0103	CUTTER ONLY- 102	38.46	30.48	601-0309	09 PLUG 3/8 HOSE	5.18	4.73
601-0104	RADIUS TIP DRESSER	533.61	533.61	601-0314	600 SOCKET 1/8 NPT FE-	11.76	10.57
601-0120	9681 TIP FILE	25.40	23.79	601-0315	601 SOCKET 1/8 NPT MALE	11.76	10.57
601-0120-H	9681 FILE HANDLES	2.58	2.37	601-0316	602 SOCKET 1/4 NPT FE-	11.76	10.57
601-0201	EX-1 #4 EXTRACTOR	196.74	158.51	601-0317	603 SOCKET 1/4 NPT MALE	11.76	10.57
601-0202	EX 2 #5 EXTRACTOR	196.74	158.51	601-0320	608 SOCKET 3/8 HOSE	13.43	12.30
601-0203	EX 3 DOUBLE EXTRACTOR	361.88	342.88	601-0340	HOSE CLAMP	1.76	1.34
601-0210	EX-4 TOGGLE (NOT AVAIL)	45.57	40.04	601-0350	3/8" BRADED WATER HOSE	1.89	1.56
601-0220	EX4-F FEMALE EXTRACTOR	56.05	51.68	601-0400	COPPER-LUBE ANTI-SEIZE	47.04	47.04

## DRY JUMPER STANDARD & HIGH FLEX (XL) CABLES

CABLE OAL	600 MCM	750 MCM	750 MCM XL	1000 MCM	1000 MCM XL	1200 MCM	1200 MCM XL	1500 MCM
12	34.75	40.61	42.29	48.09	51.42	61.95	64.54	66.08
14	37.75	44.49	46.43	52.92	56.75	68.03	71.01	73.49
16	40.74	48.36	50.56	57.75	62.08	74.10	77.47	80.91
18	38.94	52.24	54.69	62.58	67.42	80.17	83.94	88.33
20	46.73	56.12	58.83	67.41	72.75	86.25	90.41	95.75
22	49.73	60.00	55.31	72.24	78.08	92.32	96.87	88.58
24	46.44	63.88	67.09	77.07	83.42	98.40	103.34	110.58
26	55.72	67.76	71.22	81.90	88.75	104.47	109.80	118.00
28	58.71	71.64	75.36	86.73	94.08	110.55	116.27	125.41
30	61.71	75.51	79.49	91.56	99.42	116.62	122.73	132.83
32	64.70	79.39	83.62	96.39	104.75	122.70	129.20	140.25

Price may vary based on terminal style. When ordering please specify the total cable length, the MCM size and terminal required. Please call for quantity discounts and for lengths not shown.



Part  
Reference

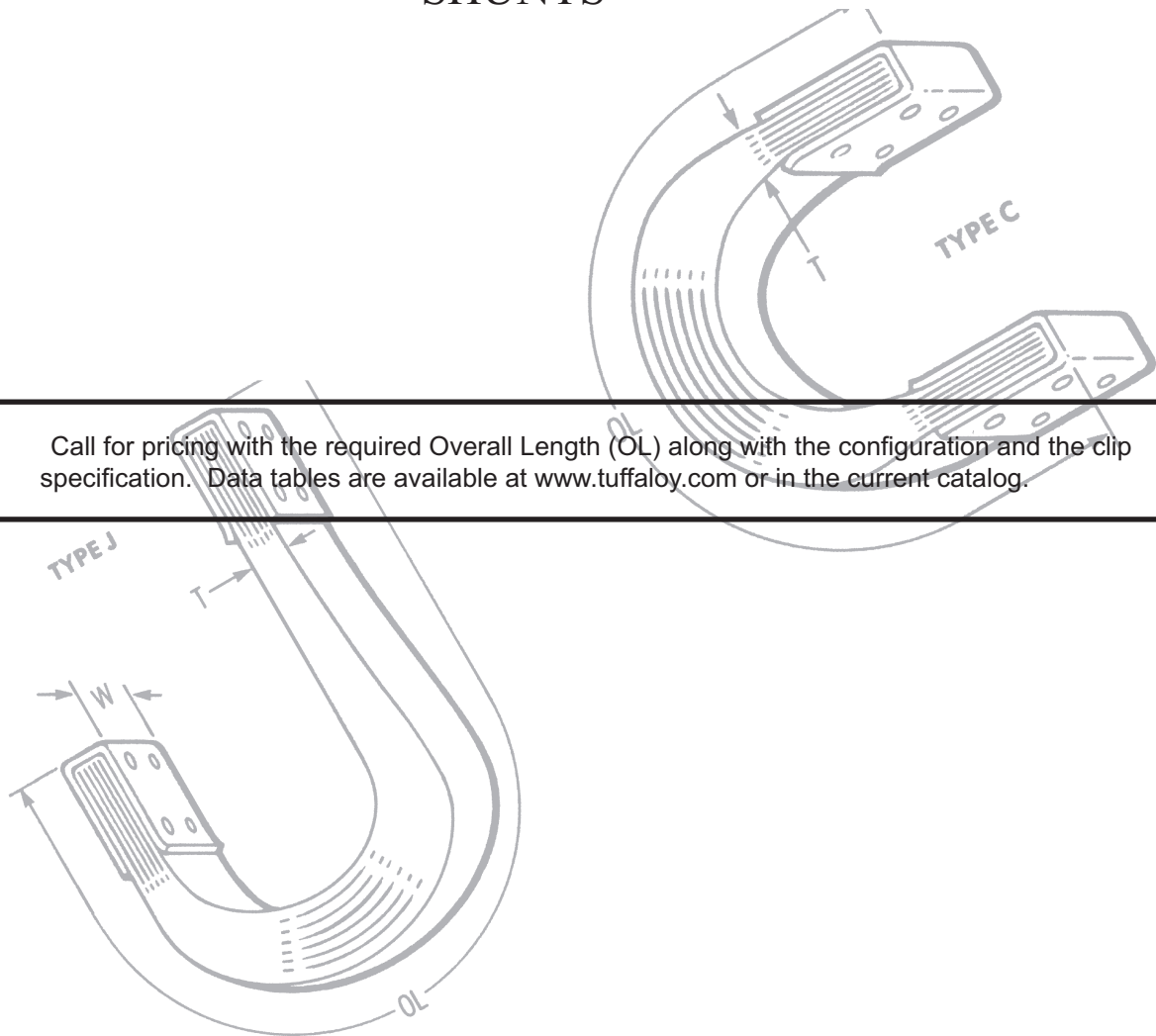
## DRY JUMPER STANDARD & HIGH FLEX (XL) CABLES

CABLE OAL	600 MCM	750 MCM	750 MCM XL	1000 MCM	1000 MCM XL	1200 MCM	1200 MCM XL	1500 MCM
34	67.70	83.27	76.16	101.22	110.08	128.77	135.66	147.66
36	70.69	87.15	91.89	106.05	115.42	134.84	142.13	155.08
38	73.69	91.03	83.11	110.88	120.75	140.92	148.60	162.50
40	76.68	94.91	100.16	115.71	126.08	146.99	155.06	169.92
42	79.68	98.79	104.29	120.54	131.41	153.07	161.53	177.33
44	71.40	102.66	108.42	125.37	136.75	159.14	167.99	184.75
46	85.67	106.54	112.55	130.20	142.08	165.22	174.46	192.17
48	88.66	110.42	116.69	135.03	147.41	171.29	180.92	199.58

Price may vary based on terminal style. When ordering please specify the total cable length, the MCM size and terminal required. Please call for quantity discounts and for lengths not shown.

## SHUNTS

Call for pricing with the required Overall Length (OL) along with the configuration and the clip specification. Data tables are available at [www.tuffaloy.com](http://www.tuffaloy.com) or in the current catalog.



Part  
Reference

Part Number	Part Description	price pound
-------------	------------------	-------------

Part Number	Part Description	price pound
-------------	------------------	-------------

### CLASS 2 (CrZr) ROUND

410-0500	1/2'dia.CR.ZIRC. 85Rb CAP	15.78
410-0625	5/8'dia.CR.ZIRC. 85Rb CAP	15.78
410-0750	3/4'dia.CR.ZIRC. 85Rb CAP	15.78

### CLASS 1 (Zr) ROUND

411-0499	1/2' dia. TUFF 88 BAR	17.01
411-0625	5/8' DIA TUFF 88 BAR	17.01
411-0750	3/4 DIA TUFF 88 BAR	17.01
411-0875	7/8 DIA TUFF 88 BAR	17.01
411-1000	1' DIA TUFF 88 BAR	17.01

### CLASS 2 (Cr) ROUND

421-0125	1/8 DIA TUFF 77 BAR	20.94
421-0375	3/8' DIA TUFF 77 BAR	20.94
421-0500	1/2' dia. TUFF 77 CAP	13.85
421-0625	5/8 DIA. #77 CAP STOCK	13.85
421-0750	3/4 DIA. #77 CAP STOCK	13.85
421-0875	7/8 DIA. #77 CAP STOCK	13.85
421-0999	1' DIA. #77 CAP STOCK	13.85
421-1125	1 1/8' DIA TUFF 77	13.85
421-1250	1-1/4' DIA. TUFF 77 CAP	14.60
421-1375	1 3/8'DIA TUFF 77 BAR	14.60
421-1500	1 1/2' DIA TUFF 77 BAR	14.60
421-1750	1-3/4' DIA TUFF 77 BAR	14.60
421-2000	2' DIA TUFF 77 BAR	14.60
421-2500	2 1/2 DIA TUFF 77 BAR	14.60
421-3000	3' DIA TUFF 77 BAR	14.60

### CLASS 2 (Cr) HEXAGON

422-0500	1/2 HEX TUFF 77	18.59
422-0625	5/8' HEX TUFF 77 BAR	18.59
422-0875	7/8 HEX TUFF 77 BAR	18.59
422-1000	1' HEX TUFF 77 BAR	18.59
422-1250	1 1/4 HEX TUFF 77 BAR	18.59
422-1375	1 3/8 HEX TUFF 77 BAR	18.59
422-1500	1 1/2 HEX TUFF 77 BAR	18.59

### CLASS 2 (Cr) SQUARE

423-0500	1/2 SQ TUFF 77 BAR	17.79
423-0625	5/8 SQ TUFF 77 BAR	16.62
423-0750	3/4 SQ TUFF 77 BAR	16.62
423-1000	1' SQ TUFF 77 BAR	16.62
423-1250	1 1/4 SQ TUFF 77 BAR	16.62
423-1500	1 1/2 SQ TUFF 77 BAR	16.62
423-2000	2' SQ TUFF 77 BAR	16.62

### CLASS 2 (Cr) RECTANGLE

424-0208	1/4x7/8 rect. TUFF 77 BAR	18.59
424-0210	1/4 X 1 TUFF 77 BAR	18.59
424-0507	1/2 X 3/4 TUFF 77 BAR	16.37
424-0510	1/2 X 1 TUFF 77 BAR	16.37
424-0610	5/8 X 1 TUFF 77 BAR	16.37
424-0615	5/8 X 1 1/2 TUFF 77 BAR	16.37
424-0620	5/8 X 2 TUFF 77 BAR	16.37
424-0630	5/8 X 3 TUFF 77 BAR	16.37
424-0715	3/4 X 1 1/2 TUFF 77	16.37
424-1012	1'X 1 1/4' TUFF 77	15.82
424-1015	1 X 1 1/2 TUFF 77	15.82
424-1020	1 X 2 TUFF 77	15.82
424-1025	1 X 2 1/2 TUFF 77	15.82
424-1030	1 X 3 TUFF 77	15.82
424-1215	1 1/4 X 1 1/2 TUFF 77	15.82
424-1220	1 1/4 X 2 TUFF 77	15.82
424-1517	1 1/2 X 1 3/4 TUFF 77	15.82
424-2032	2 X 3 1/4 TUFF 77	17.79
424-2037	2 X 3 3/4 TUFF 77	17.79

### CLASS 3 (Be) ROUND

431-0125	1/8 DIA TUFF 55	22.05
431-0250	1/4 DIA TUFF 55	22.05
431-0375	3/8 DIA TUFF 55	22.05
431-0500	1/2 DIA TUFF 55	22.05
431-0625	5/8 DIA TUFF 55	22.05
431-0750	3/4 DIA TUFF 55	22.05
431-0875	7/8 DIA TUFF 55	22.05
431-1000	1' DIA TUFF 55	22.05
431-1125	1 1/8 DIA TUFF 55	22.05
431-1250	1 1/4 DIA TUFF 55	22.05
431-1500	1 1/2 DIA TUFF 55	22.05
431-1625	1 5/8 DIA TUFF 55	22.05
431-1750	1 3/4 DIA TUFF 55 BAR	22.05
431-2000	2' DIA TUFF 55	22.05

Part Number	Part Description	price pound
-------------	------------------	-------------

Part Number	Part Description	price pound
-------------	------------------	-------------

Part Number	Part Description	price pound
-------------	------------------	-------------

Part Number	Part Description	price pound
-------------	------------------	-------------

### CLASS 3 (Be) SQUARE

433-0250	1/4' SQ TUFF 55	27.88
433-0375	3/8 SQ TUFF 55	27.88
433-0500	1/2 SQ TUFF 55	27.88
433-0625	5/8 SQ TUFF 55	23.58
433-0750	3/4 SQ TUFF 55	23.58
433-1000	1 SQ TUFF 55	23.58
433-1250	1 1/4 SQ TUFF 55 BAR	23.58
433-1500	1 1/2 SQ TUFF 55 BAR	23.58
433-2000	2 SQ TUFF 55	23.58
433-2250	2 1/4' SQ TUFF 55	23.58

### CLASS 3 (Be) RECTANGLE

434-0207	1/4 X 3/4 TUFF 55	28.33
434-0210	1/4 X 1 TUFF 55	28.33
434-0215	1/4 X 1 1/2 TUFF 55	28.33
434-0220	1/4 X 2 TUFF 55	28.33
434-0225	1/4 X 2-1/2 TUFFALOY #55	28.33
434-0305	3/8 X 1/2 TUFFALOY #55	28.33
434-0307	3/8 X 3/4 TUFF 55	28.33
434-0310	3/8 X 1 TUFF 55	28.33
434-0312	3/8 X 1-1/4 TUFF 55	28.33
434-0315	3/8 X 1-1/2 TUFFALOY #55	28.33
434-0320	3/8 X 2 TUFF 55	28.33
434-0507	1/2 X 3/4 TUFF 55	28.33
434-0510	1/2 X 1 TUFF 55	28.33
434-0512	1/2 X 1 1/4 TUFF 55	28.33
434-0515	1/2 X 1 1/2 TUFF 55	28.33
434-0520	1/2 X 2 TUFF 55	28.33
434-0525	1/2 X 2 1/2 TUFF 55	28.33
434-0607	5/8 X 3/4 TUFF 55	23.44
434-0610	5/8 X 1 TUFF 55	23.44
434-0612	5/8 X 1-1/4 TUFFALOY #55	23.44
434-0615	5/8 X 1 1/2 TUFF 55	23.44
434-0620	5/8 X 2 TUFF 55	23.44
434-0710	3/4 X 1 TUFF 55	23.44
434-0712	3/4 X 1 1/4 TUFF 55	23.44
434-0715	3/4 X 1 1/2 TUFF 55	23.44
434-0720	3/4 X 2 TUFF 55	23.44
434-0722	3/4 X 2 1/4 TUFF 55	23.44
434-0725	3/4 X 2-1/2 TUFF 55 BAR	23.44
434-1012	1'X1 1/4' TUFF 55	23.44
434-1015	1 X 1 1/2 TUFF 55	23.44
434-1016	1' x 1-5/8' TUFF 55	23.44
434-1020	1 X 2 TUFF 55	23.44
434-1025	1 X 2 1/2 TUFF 55	23.44
434-1030	1 X 3 TUFF 55	23.44
434-1520	1 1/2 X 2 TUFF 55	23.44
434-1530	1 1/2 X 3 TUFF 55	23.44

The stated price is a base list price that will change with cutting charges ( Table 2 ) and single item weight adders ( Table 3 ). Apply the two tables to the stated price.

**Table 2**  
Major thickness

Length inches	1/8 to 5/8	Over 5/8 to 1	Over 1 to 2	Over 2 to 3	Over 3
<b>Under 12</b>					
Class 1	1.05	.60	.35	.30	.25
Class 2	1.10	.65	.40	.35	.30
Class 3	1.30	.85	.50	.50	.45
<b>12" to 36"</b>					
Class 1	.55	.35	.20	.15	.15
Class 2	.60	.40	.35	.20	.20
Class 3	.70	.50	.35	.30	.30
<b>over 36"</b>					
Class 1	.30	.20	.15	.15	.15
Class 2	.35	.25	.20	.15	.15
Class 3	.40	.30	.25	.20	.20

Bar stock purchased in mill lengths will not have a charge

**Table 3**

Under 10 pounds	1.05
10 to 15 pounds	.95
15 to 20 pounds	.85
20 to 25 pounds	.70
30 to 50 pounds	.65
50 to 199 pounds	.55
200 to 300 pounds	0.00 ( Base )
300 to 500 pounds	-.50
500 to 1000 pounds	-1.00
Over 1000 pounds call for market pricing	
Minimum order charge is \$100.00 FOB plant	
Freight allowed on shipments of 500 lbs. or more	
Grouping allowed for freight allowance only	

Part Number	Part Description	price pound
-------------	------------------	-------------

Part Number	Part Description	price pound
-------------	------------------	-------------

Part  
NumberPart  
Description

1

Part  
NumberPart  
Description

1

## REPLACEMENT COMPONENTS

001-213B	18-213 BARREL NICKEL	67.82	195-5574	#4 LD TT SHANK	35.06
001-214B	18-214 BARREL NICKEL	72.61	195-5575	#4 HD TT SHANK	32.29
001-216B	18-216 BARREL NICKEL	52.29	195-5576	#5 LD TT SHANK	28.99
001-217B	18-217 BARREL NICKEL	67.39	195-5577	#5 HD TT SHANK	25.98
001-233B	18-233 BARREL NICKEL	81.56	195-5578	#6 HD TT SHANK	68.15
001-234B	18-234 BARREL NICKEL	87.57	195-5579	#7 HD TT SHANK	41.26
001-236B	18-236 BARREL NICKEL	74.86	195-5581	ARTIC 4RW SHANK	52.72
001-237B	18-237 BARREL NICKEL	89.50	195-5582	ARTIC 5RW SHANK	26.35
037-0093	O' RING FOR AD-105	0.76	195-5583	ARTIC 5RW SHANK (1 1/2')	38.67
037-0094	O' RING FOR ARTIC	0.76	195-5584	ARTIC 1'-12 NF SHANK	40.32
037-0096	'O' RING 5RW NICKEL PLATE	3.26	195-5585	ARTIC 6RW SHANK (1 1/2')	38.67
037-0098	O' RING FOR ARTIC	1.26	195-5586	5576-2 SHANK	28.99
037-0099	QUAD RING FOR HEAD 116	4.68	195-5595	90 DEG HOSE CONN.	2.94
037-0500	10-32 X 1' SHCS Srew	2.76	195-5595-T	90 DEG CONN W/.218 TUBE	5.89
194-2010	100 20 DISC 7/8'dia. .06	0.70	195-5605	W/C EQ TIP ASSY 1'	349.90
194-2043	5/16'-18 ID NURLED NUT	1.51	195-5605-4	W/C EQ TIP BODY ASSY	349.90
194-2044	5/16-18 X 1 SHC BOLT	1.51	195-5606	W/C EQ TIP ASSY 1 1/2 C	565.42
194-2050	101-3 BUSHING	3.18	195-5606-4	W/C BODY ASSY 1 1/2 4RW	565.42
195-0015	ADJUSTABLE WATER TUBE	4.53	195-5610	#5 A/C EQ TIP BODY	114.82
195-0017	ADJUSTABLE WATER TUBE	4.83	195-5611	WC EQ TIP BODY	294.56
195-0100	HEAD ASSEMBLY #5 NICKEL	57.16	195-5613	5613 BODY W/C 1 1/2	358.03
195-0101	HEAD ASSEMBLY #4 NICKEL	55.09	195-5621	AC EQ TIP BARREL	48.30
195-0208	8' BARREL WATER TUBE ASS	41.83	195-5622	BARREL WC EQUA TIP-5	48.30
195-0210	8' BARREL WATER ASS #4	32.95	195-5624	BARREL-EQUATIP 4RW	48.30
195-0211	12' BARREL WATER ASS #4	41.31	195-5630	PIVOT AIR COOLED	6.26
195-0212	12' BARREL WATER TUBE	45.97	195-5631	WC EQ TIP PIVOT	17.14
195-1312	ARTIC 131 BODY	105.02	195-5632	PIVOT 1 1/2 W/C EQUA TIP	38.96
195-2252	ARTIC BD NP 225; 231; 207	123.40	195-5645	WC COVER	11.88
195-2382	ARTIC BODY NP	123.40	195-5650	QUAD O-RING EQTIP	1.50
195-2443	ARTIC 244 & 212 BODY	203.73	195-5652	GASKET FOR 1' EQUATIPS	5.24
195-2563	ARTIC 256 BODY	203.73	195-5653	GASKET FOR 1.5' EQUATIP	5.24
195-4371	437-1 STUD&NUT BD .444	102.12	195-5670	EQ TIP SPRINGS	1.85
195-4371-10W	437/10W STUD&NUT	123.40	195-5679	#4 WC EQ TIP SHANK	36.18
195-5172	WATERTUBE 4'ON STYLE	17.88	195-5680	#5 WC EQ TIP SHANK	36.18
195-5173	.182 TUBE H-SHP FOR ARTIC	5.89	195-5855	9/6'DIA MICARTA DISC	0.83
195-5320	#4 K.O. PLUG	51.47	195-6010	1 1/2' DIA HLDR SLEV	134.30
195-5321	#5 K.O. PLUG	51.47	195-6020	HOLDER LOCKSET	20.67
195-5421	WASHER FOR AD-785-90	1.71	195-6050	PM-1 CASTING	147.74
195-5553	LD TT BODY	132.50	195-6051	PM-2 CASTING	158.33
195-5554	LD TT BODY	135.54	195-6070	HP PM-1 COUPLING	26.55
195-5555	LD TT BODY	147.66	195-6071	HP PM-2 COUPLING	53.72
195-5556	LD TT BODY	185.22	195-6080	O RING HP PM-1	1.75
195-5564	HD TT BODY	340.96	195-6082	O RING HP PM-2	1.97
195-5565	HD TT BODY	302.86	195-6101	BODY ASY FFU HOLDER (M)	884.89
195-5566	HD TT BODY	302.86	195-6102	BODY ASSY FFU MH	879.67
195-5567	HD TT BODY	399.90	195-6103	BODY ASSY FFU H	896.71
195-5568	HD TT BODY	423.43	195-6110	O RING FFU	3.50
195-5570	LD TT PIVOT	48.20	195-6111	M-49 SPRING	18.94
195-5571	HD TT PIVOT	40.32	195-6112	MHC-49 SPRING	22.82

Part  
NumberPart  
Description

1

Part  
NumberPart  
Description

1

Part  
NumberPart  
Description

1

Part  
NumberPart  
Description

1

## REPLACEMENT COMPONENTS

195-6113	H-49 SPRING	27.45	195-8240	8240 CONN 1/8 PIPE	2.18
195-6116	TOP SPLIT CONTACT	62.48	195-8241	8241 CONN 1/4-3/8	1.88
195-6117	BOTTOM SPLIT CONTACT	61.99	195-8242	1/4' PIPE CONN	2.10
195-6118	2 = 1 SET IND CLAMP	81.39	195-8243	PRESS ON SWIVEL	5.58
195-6120	#1200 HOLDER BARREL	282.19	195-8244	1/4' Barb X 1/8' NPT Bras	1.75
195-6121	# 1200 HOLDER BODY	297.51	195-8250	O'RING-EJEXT BUTT	1.51
195-6122	# 1200 HOLDER CAP	135.88	195-8251	O' RING-HOLDER	2.02
195-6145	PLATTEN MT 1200 HLDR	219.51	195-8252	O RING 5RW HLD	1.43
195-7005	STD EQ PRESS BODY ASSY	1275.61	195-8253	O-RING 6&7 RW HLD	1.50
195-7006	7006 BODY ASSY EQUA	1288.46	195-8254	O-RNG HI-PRESSURE	1.50
195-7010	STD BODY EQ PRESS 7010	640.99	195-8260	8260 COUPLING 4&5 RW	16.79
195-7025	7025 CAP SHANK MOUNT	200.07	195-8261	8261 COUPLING 6&7	36.87
195-7028	7028 CAP PLATTEN MOUNT	234.28	195-8262	8262 COUPLING 4&5	16.79
195-7035-L	EQ PRESS BARREL LH	194.09	195-8269	8269 C-CLIP (#4&5-I'HLD)	2.02
195-7035-R	EQ PRESS BARREL RH	194.09	195-8270	8270 SNAP RNG 4&5	1.46
195-7045	7045 SLIDE EQUA PRESS	136.23	195-8271	8271 SNAP RING 6&7	1.50
195-7050	7050 BODY ASSY TRI	1664.95	195-8280	8280 SPRING SM DIA	2.72
195-7051	7051 BODY TRI SPACER	614.79	195-8281	8281 SPRING 4RW	2.25
195-7052	7052 CAP SHANK MOUNT	270.60	195-8282	8282 SPRING 5;6;7 RW	1.35
195-7053	7053 CAP PLATTEN MOUNT	231.78	195-8283	5RW SPRING NICKEL PLATE	0.57
195-7054	7054 SPACER PM CAP	47.99	195-8301	8301 KO TUBE #4-8'	16.64
195-7055	7055 CONE TRI SPACER	98.66	195-8302	8302 KO TUBE #4-12'	21.98
195-7057	7057 BARREL TRI SPACER	217.40	195-8303	8303 K O TUBE #5-8'	31.38
195-7060	7060 SHANK 1' DIA	92.95	195-8304	8304 K O TUBE #5-12'	27.88
195-7061	7061 SHANK 1-1/4' DIA	60.24	195-8310	8310 K O TUBE #4-8'	18.58
195-7062	1 1/2 DIA SHANK	83.85	195-8311	8311 K O TUBE #4-12'	23.41
195-7063	7063 CYL MOUNT	93.52	195-8312	8312 K O TUBE #5-8'	19.11
195-7080	7080 LOWER HOLDER ASSY	234.27	195-8313	8313 K O TUBE #5-12'	29.28
195-7081	7081 LOWER HOLDER	134.81	195-8314	8314 K O TUBE #6-8'	34.47
195-7090	7090 LOW ELECTRODE ASSY	217.10	195-8315	8315 K O TUBE #6 12'	34.11
195-7095	7095 LOW ELEC TRI SPACER	191.05	195-8316	8316 K O TUBE #7-8'	34.96
195-7105	7105 BODY ASSY CC EQU PR	1082.41	195-8317	8317 K O TUBE #7-12'	33.26
195-7106	7106 BDY ASSY CC FOR PM	1088.36	195-8318	8318 K O TUBE 8-8'	18.30
195-7110	7110 BODY CC EQUA PRESS	715.61	195-8319	8319 K O TUBE 8-12'	23.47
195-7111	7111 BODY CC PLT	721.91	195-8320	8320 KO+HD	33.58
195-7120	7120 BARREL CC EQUA PR	155.72	195-8321	8321 KO+HD	42.32
195-7125	O RING BARREL	2.50	195-8322	8322 KO TUBE #4(1'DIA)-8'	18.58
195-7130	7130 COVER CC EQUA	56.52	195-8323	8323 KO TUBE#4(1'DIA)-12'	32.78
195-7133	7133 GASKET COVER	6.33	195-8330	8330 ADJ TUBE #4	3.58
195-7135	7135 SLIDE CC EQUA PRESS	111.92	195-8331	8331 ADJ TUBE #5	5.24
195-7140	7140 PLATE PLAT MOUNT	223.31	195-8332	8332 ADJ TUBE 6 & 7	7.72
195-8209	8209 THREAD RING BARREL	10.84	195-8340	8340 SPRING #4 ADJ TUBE	3.76
195-8210	8210 THREAD RING BARREL	18.24	195-8341	8341 SPRING #5 ADJ TUBE	3.68
195-8211	8211 HEAD UNDER 1'	41.96	195-8342	8342 SPRING 6&7 ADJ TUBE	3.68
195-8212	8212 HEAD #4 RW HOLDER	46.43	195-8350	#4 SPRING/TUBE ASSEMBLY	7.89
195-8213	8213 HEAD # 5 RW HOLDER	39.34	195-8351	#5 SPRING/TUBE ASSEMBLY	9.32
195-8214	8214 HEAD #6-7-8 RW	50.08	195-8501	8501 HEAD NON EJEXT	33.10
195-8215	8215 HEAD #4&5 1'DIA	39.34	195-8503-.25	8503 PLUG .25' TUBE HOLE	4.31
195-8230	8230 EJEXTOR BUTTON	22.36	195-8503-.312	8503 PLUG- NON EJEXT	4.31

Part  
NumberPart  
Description

1

Part  
NumberPart  
Description

1



Part Number      Part Description

1-

## REPLACEMENT COMPONENTS

195-8539	8539 SNAP RING- S&N TIP	1.39
195-8540	8540 SNAP RING S & N TIP	1.39
195-8550	8550 ADAPTER #4 RW	24.52
195-8551	8551 ADAPTER #5 RW	24.52
195-90061-P/L	90061 PAD & LABEL 3;000	21.43
195-9110	#4 EXTRACTOR HEAD	267.27
195-9111	#5 EXTRACTOR HEAD	267.27
195-9112	HANDLE-SINGLE EXTRAC-	42.27
195-9113	HANDLE-DOUBLE EXTRAC-	44.39
195-9120	CASTING- 102 CUTTER	17.10
195-9121	HANDLE ONLY- 102	19.48
195-9122	INSULATED HANDLE-102	25.47
195-9123	O RNG- 102 DRESSER	1.40
195-9124	DIAL ONLY FOR 8020	43.16
195-9128	GAGE BATTERY	16.67



## Facilities

Manufacturing and Offices  
1400 South Batesville Road  
Greer, South Carolina 29650  
USA  
001-864-879-0763

Manufacturing and Service  
Midline Road  
Blenheim, Ontario N0P 1A0  
Canada  
001-519-676-8173

Shipping and Service  
50300 Rizzo Drive  
Shelby TWP, Michigan 48315  
USA  
001-586-991-2445

Shipping and Sales  
Castle Mill Works  
Birmingham New Raod  
Dudley West Mid, DY1 4DA  
England UK  
011-44-1384-455401

Sales Offices  
851 47th Street SW  
Wyoming, Michigan 49509  
USA  
001-864-879-0763