

Spot Weld, Inc.  
2290 Wycliff Street  
St. Paul, MN 55114

Toll Free: 800-582-5229  
Ph: 651-646-1393  
Fax: 651-646-3616  
www.spotweldinc.com



**SPOTWELD Incorporated**  
Excellence in Resistance Welding

## Resistance Spot Weld Training



### ABOUT US

With 35 years of service and experience, we have the best trained and most knowledgeable resistance welding technicians available anywhere, period. Contact our friendly staff with your welding problem, and we will work efficiently and quickly to solve nearly all of the most complicated resistance welding applications.

### BUILT TO YOUR NEEDS

Spot Weld, Incorporated can take your application specifications and build standard or special application spot welders to suit your needs. Just tell us the material you are welding, the metal thickness, and provide us with any special prints or sketches that communicate your welding needs. We'll take it from there!

### INTRODUCTION

Spot Weld Inc. offers onsite training at your facility or at our shop location. The training program will be beneficial to your welding personnel, shop supervisors, maintenance personnel and manufacturing engineers that require a refresher course or in-depth working knowledge of: set-up, maintenance, do's and don'ts, troubleshooting and accessories for your current or newly purchased resistance welding machines.

### TOPICS FOR REVIEW

- Resistance Welding Machine Types
- Controls
- How Resistance Machines Work
- 5 Parameters of Resistance Welding
  - Heat
  - Time
  - Pressure
  - Tooling
  - Cooling
- Class of Tips / Electrodes / Dressing
- Material Types to be Welded
  - CRS / Low Carbon Steel
  - Stainless Steel
  - Aluminum
  - Galvaneel
  - Galvanized
  - Exotic Metals
- Books / Charts / Schedules / Guides
- Maintenance / Troubleshooting
- Required Tools
- Safety

### WHERE:

- Your Onsite Location (Preferred)
- Our Shop Location (St. Paul, MN)

### BENEFICIAL TO:

- Welding Personnel
- Shop & Maintenance Supervisors
- Maintenance Personnel
- Manufacturing Engineers

### MACHINE TYPES INCLUDE:

- Rocker Arm
- Press / Projection
- Heavy Duty Rocker Arm & Press Projection
- Press / Spot
- Combination Press Projection
- Butt Welders
- Seam Welders
- Bench Style Welders
- Handheld / Gun Style
- Micro Welders



Spot Weld, Inc.  
2290 Wycliff Street  
St. Paul, MN 55114

Toll Free: 800-582-5229  
Ph: 651-646-1393  
Fax: 651-646-3616  
www.spotweldinc.com



**SPOTWELD Incorporated**  
Excellence in Resistance Welding

## Training Agenda

### ADAPTABILITY

Experience being the best teacher, we have learned how to best align machinery with your needs. We take into account your production rate, your operators needs, electricity prerequisites, and of course your budget.

*Confused by all the options available to you?* Let us help you select from a long list of resistance welding styles:

- Single-Phase A/C
- Three- Phase A/C
- Medium Frequency Direct Current (MFDC) Inverter
- Seam Welding
- Rapid-Fire Welding
- Capacitive Discharge

### ONE STOP SHOPPING

Our in-house capabilities include 3D solid modeling (CAD), Finite Element (stress) Analysis, CNC prototyping, MIG & TIG (GMAW & GTAW) welding, plasma cutting, Horizontal and vertical milling, lathe work, and engineering skills make all this work for you.

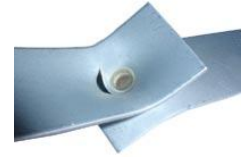
### Hands on Training at Machine

- Knurlers, Tip Dressing, Valves, FRL
- Do's and Don'ts
- Grease Points / Lubrication
- Speed Adjustment
- Cooling; External and Internal
- Control Programming for each Operator



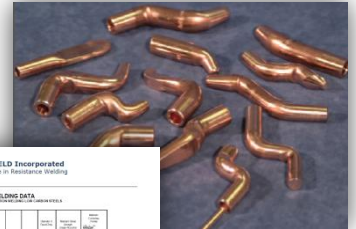
### Weld Testing

- Pull Nuggets, Show Peel Test and Destructive Testing, Quality is #1
- Visual Checks
- Pull Tester or Pillow Testing



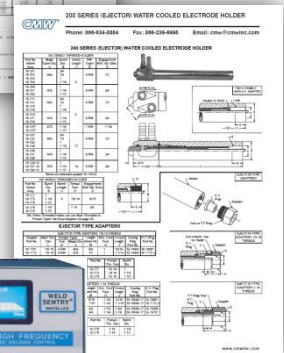
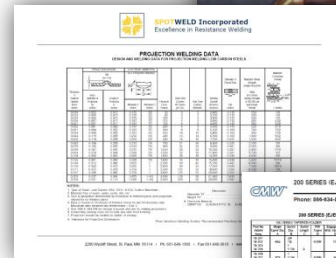
### Documentation

- Weld Schedule Sheets
- Preventative Maintenance Sheets
- Maintenance Manuals
- Weld Control Manual
- Yellow Books and Cards
- Electrode Tip Catalogs
- Seam Welding Information



### Training on the Following:

- Control Parameters (In-Depth Operation)
- Pneumatic System (Air components)
- Water System (Temperature & Flow)
- Transformers
- Electrode Tip & Wheel Maintenance
- Special Tooling
- Preventative Maintenance



### Question & Answer Time

Spot Weld, Inc.  
2290 Wycliff Street  
St. Paul, MN 55114

Toll Free: 800-582-5229  
Ph: 651-646-1393  
Fax: 651-646-3616  
www.spotweldinc.com



**SPOTWELD Incorporated**  
Excellence in Resistance Welding

#### PROFESSIONALS

You get the individual attention you deserve at Spot Weld, Inc. You can rely on our courteous service. We know what we're talking about. If we don't have an answer, we'll say so, and then do our best to get it for you.

Call us with your questions about electrode tips, studs, holders or any kind of resistance spot weld equipment.

- Competitive Prices
- Large Stock
- High Quality
- Fast Delivery
- No Minimum Order

#### GAURANTEE

All our machines carry a like-new one-year parts and labor guarantee.

If you're not satisfied, we take it back!

## Training Sign-Up Form

(Complete the form below and send in by email or print and fax to 651-646-3616)

Contact Name: \_\_\_\_\_

Company Name: \_\_\_\_\_

Company Address: \_\_\_\_\_

City: \_\_\_\_\_ State: \_\_\_\_\_ Zip: \_\_\_\_\_

Phone: \_\_\_\_\_

Fax: \_\_\_\_\_

Email: \_\_\_\_\_

Number of People Attending: \_\_\_\_\_

Approx. Date of Training: \_\_\_\_\_

Location of Training: \_\_\_\_\_

Comments:

---

---

---

**Spot Weld, Inc.**  
2290 Wycliff Street  
St. Paul, MN 55114

Toll Free: 800-582-5229  
Phone: 651-646-1393  
Fax: 651-646-3616  
email: [swi@spotweldinc.com](mailto:swi@spotweldinc.com)  
[www.spotweldinc.com](http://www.spotweldinc.com)